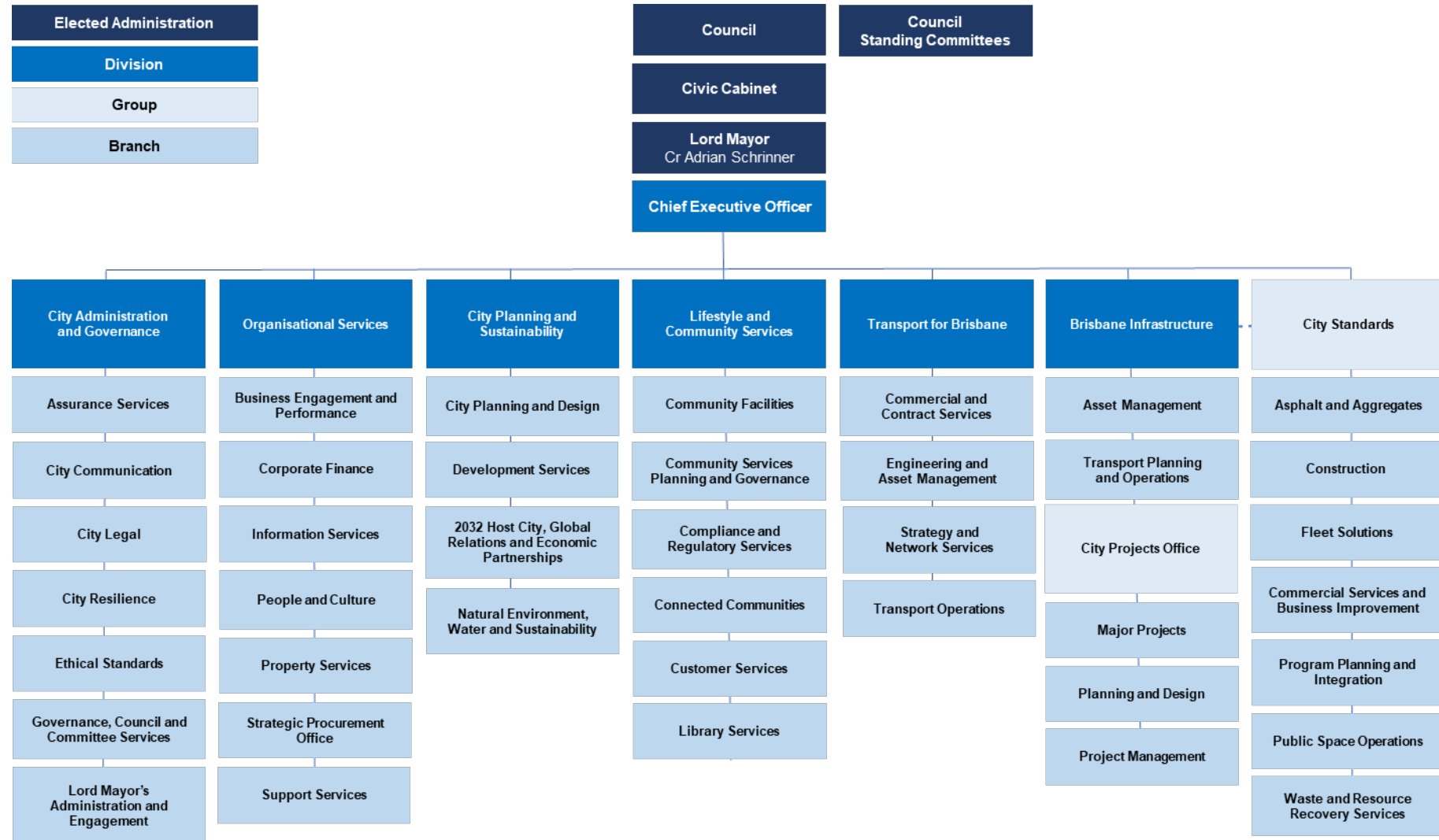


Brisbane City Council Organisational Chart as of May 2025

See page 2 for a long description of this organisational flow chart.



Long description of Brisbane City Council Organisational Chart as of May 2025

The Brisbane City Council Organisational Chart represents the structure of Council and the formal relationships and relative ranks of its departments and sections.

Tier 1

Council (elected administration) and Council Standing Committees (elected administration)

Tier 2

Civic Cabinet (elected administration)

Tier 3

Lord Mayor Councillor Adrian Schrinner (elected administration)

Tier 4

Chief Executive Officer

Tier 5

This tier consists of six (6) divisions of equal standing followed by a listing of branches and groups under that division.

- 1) City Administration and Governance
 - a) Assurance Services
 - b) City Communication
 - c) City Legal
 - d) City Resilience
 - e) Ethical Standards
 - f) Governance, Council and Committee Services
 - g) Lord Mayor's Administration and Engagement
- 2) Organisational Services
 - a) Business Engagement and Performance
 - b) Corporate Finance

- c) Information Services
 - d) People and Culture
 - e) Property Services
 - f) Strategic Procurement Office
 - g) Support Services
- 3) City Planning and Sustainability
- a) City Planning and Design
 - b) Development Services
 - c) 2032 Host City, Global Relations and Economic Partnerships
 - d) Natural Environment, Water and Sustainability
- 4) Lifestyle and Community Services
- a) Community Facilities
 - b) Community Services Planning and Governance
 - c) Compliance and Regulatory Services
 - d) Connected Communities
 - e) Customer Services
 - f) Library Services
- 5) Transport for Brisbane
- a) Commercial and Contract Services
 - b) Engineering and Asset Management
 - c) Strategy and Network Services
 - d) Transport Operations
- 6) Brisbane Infrastructure
- a) Asset Management
 - b) Transport Planning and Operations
 - c) City Projects Office
 - i) Major Projects
 - ii) Planning and Design
 - iii) Project Management
 - d) City Standards
 - i) Asphalt and Aggregates
 - ii) Construction
 - iii) Fleet Solutions
 - iv) Commercial Services and Business Improvement
 - v) Program Planning and Integration

- vi) Public Space Operations
- vii) Waste and Resource Recovery Services