

Amble about

ALBION



GILLESPIE BROS. (QLD.) LTD.

Gillespie Brothers
Flour Mill, Albion,
1931, Brisbane City
Council Image No.
BCC-B120-31081



Dedicated to a better Brisbane

CONTENTS

Map

Introduction



1. **Albion Hotel** (*300 Sandgate Rd*)
2. **Albion Flour Mill** (*60 Hudson Rd*)
3. **Dunaverty** (*21 Birkbeck St*)
4. **Hampton Court** (*436 Sandgate Rd*)
5. **Highlands** (*469 Sandgate Rd*)
6. **Whytecliffe** (*469 Sandgate Rd*)
7. **O'Driscoll Hall** (*469 Sandgate Rd*)
8. **Crosby Park and Chinese Market Gardens**
(*Crosby Rd*)
9. **Albion Park Racecourse** (*Adjacent to Crosby Park*)
10. **The US Chemical Warfare Service** (*Crosby Park*)
11. **Ellen Street Workers' Cottages** (*Ellen St*)
12. **The Manchester Unity Independent Order of Oddfellows Lodge Hall** (*12 Gore St*)
13. **Stephan's Saddlery** (*201 Sandgate Rd*)
14. **Albion Building** (*297 Sandgate Rd*)
15. **Wyllie's Buildings** (*299 Sandgate Rd*)
16. **Albion Post Office** (*349 Sandgate Rd*)
17. **Albion Public Hall** (*344 Sandgate Rd*)
18. **State Butcher shop** (*336 Sandgate Rd*)

MAP LEGEND

1. The Albion Hotel
2. Albion Flour Mill
3. Dunaverty
4. Hampton Court
5. Highlands
6. Whytecliffe
7. O'Driscoll Hall
8. Crosby Park and Chinese Market Gardens
9. Albion Park Racecourse
10. The US Chemical Warfare Service
11. Ellen Street Workers' Cottages
12. The Manchester Unity Independent Order of Oddfellows Lodge Hall
13. Stephan's Saddlery
14. Albion Building
15. Wyllie's Buildings
16. Albion Post Office
17. Albion Public Hall
18. State Butcher shop

-  Heritage site
-  Walking trail
-  Train station
-  Public toilet

Access for people with limited mobility:

-  Gradient between 1:20-1:14
-  Gradient in excess of 1:14

MAP

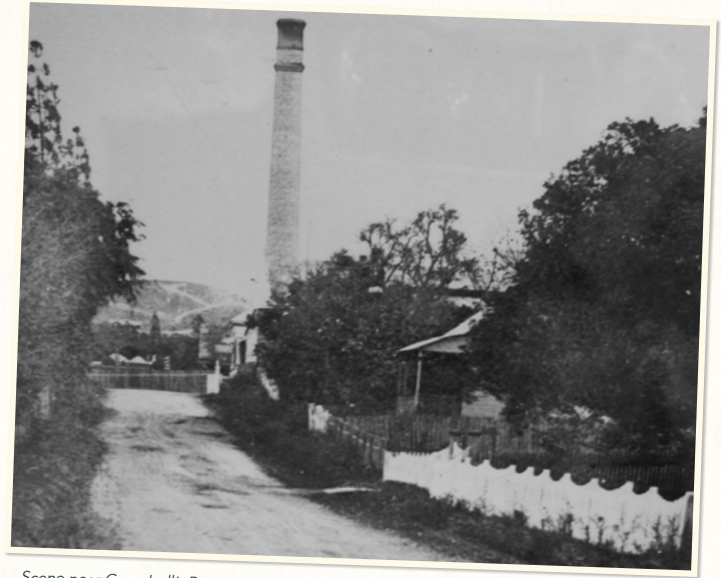


INTRODUCTION

Albion is one of Brisbane's earliest suburbs and, although quite small in area compared to other Brisbane suburbs, its rich history can be told through many of its heritage buildings and historic sites.

Before European settlement, the Albion area was home to many Aboriginal people. In 1825, after a failed attempt at settlement at Redcliffe, the Moreton Bay penal settlement was moved to the current site of the city. This heralded an era of displacement for Aboriginal people, as colonists progressively encroached upon their traditional land.

The Breakfast Creek area was traversed by Europeans in the late 1820s. By 1830, convicts had constructed a bridge across the creek, connecting to the convict-built road that today is Kingsford Smith Drive. This road led to the Eagle Farm Women's Prison. The earliest record of female convicts at Eagle Farm dates from 1830. They had been moved to Eagle Farm from the main penal settlement, away from the attention of the male convicts and soldiers who were prohibited from crossing Breakfast Creek. In 1839, the Moreton Bay penal settlement was closed and by 1842 the area was opened for free settlement.



Scene near Campbell's Pottery, 1910, State Library of Queensland

Initially, settlement in the Breakfast Creek area was slow due to the swampy nature of the land and its susceptibility to flooding. Nevertheless, by the 1860s several fishermen had built small huts along the creek. A quarry at the base of what is now known as Bartley's Hill had also been established by one of Brisbane's earliest residents and first mayor, John Petrie. This was Albion's first industry and although it was not a success, it opened up the area for industrial growth and residential settlement.





Albion Hotel on Sandgate Road, Albion, ca 1929, State Library of Queensland, Negative No. 1901

Next to the quarry, George Fischer founded Albion Pottery a few years later. This activity not only encouraged more industries to move to Albion, but brought a number of workers and their families into the area.

In the 1880s, Petrie's quarry was bought by James Campbell who introduced a brickworks. In 1896, this was amalgamated with Albion Pottery and became one of Brisbane's leading industries at the time, James Campbell & Sons Ltd.

By the 1880s, several large homes had been built on the hills overlooking Breakfast Creek, specifically Whytecliffe and Moolooburrum. The catalyst for further residential settlement in Albion was the opening of the rail line between Roma Street



Albion Station, ca 1929, State Library of Queensland, Negative No. 1901

and Sandgate in 1882. By 1892, Albion was serviced by 29 daily trains to the city. Electric trams were introduced along Sandgate Road in 1901. Improved public transport encouraged suburban settlement and commercial growth in Albion. In 1911 the population of Albion reached 2770 people.

Today, Albion is one of Brisbane's most sought-after suburbs due to its close proximity to the city, pockets of intact character houses and the historic commercial streetscape along Sandgate Road.

Please note that some sections of the 2.7 kilometre trail are steep and may not be accessible for people with limited mobility.



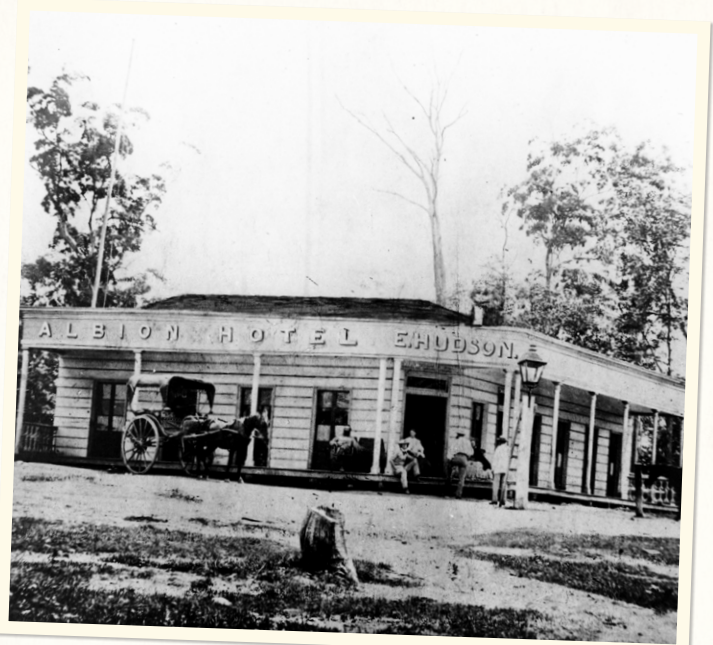
1

ALBION

Hotel

The suburb of Albion was named after the Albion Hotel that was established in 1864 by owner and licensee, Tom Haselden. It is believed that Haselden was reminded of the white cliffs of Dover in England when looking at the white cliffs of Petrie's stone quarry, and named his hotel Albion from the Latin 'albus', meaning white.

Before the 1880s, the hotel had numerous short-term licensees. In 1883, work began on the construction of a new hotel that was to replace the original one. This was designed by renowned Brisbane architect, Francis Drummond Greville Stanley. As Queensland's longest serving Colonial Architect from 1872 to 1881, Stanley was highly respected within his profession and had a flourishing private practice. His projects included the South Brisbane Municipal Library, the Queensland Club, the old Government Printery and the former State Library (built as Queensland's first museum) on William Street, the Port Office building, the General Post Office (Queen Street), Roma Street Railway Station and extensive additions to Parliament House.



Albion Hotel, Brisbane, ca 1866, State Library of Queensland, Negative No. 99714

Stanley was also the founding president of the Queensland Institute of Architects.

The Albion Hotel has provided refreshment, food and hospitality to Albion residents and visitors since the 1860s. The hotel has recently been renovated and continues this tradition.



2

ALBION

Flour Mill

On the morning of 27 November 2013, a devastating fire destroyed the historic Albion Flour Mill.

The mill was constructed by Gillespie Brothers Ltd in 1931, at a time when Australia was struggling with the effects of the Great Depression.

George and Robert Gillespie emigrated from Scotland and built their first flour mill in Melbourne in 1887. Over the next few decades, the brothers established several more mills in Sydney, Temora and Inverell. By 1904, the Gillespie brothers were exporting flour to England, Scotland, the Philippines and China. The brothers also sent flour to Queensland.

In the late 1920s, the Queensland Government placed an embargo on flour imports from southern states. This prompted the brothers to open a mill in Brisbane. Although the embargo was soon overturned, the Gillespies went ahead with their planned Albion mill. On its opening, *The Brisbane Courier* reported:



View of the Albion Flour Mill, Queensland, ca 1930, State Library of Queensland, Negative No. 10189-0002-0139

"Gillespie Bros Ltd...have now firmly established their Brisbane mill at Albion...The new flour mill is an imposing structure, equipped with the latest modern machinery and plant obtainable in the world. The famous 'Anchor' Brand Flour is now being made in Queensland and with Queensland wheat, which is far and away the best quality in Australia" (*The Brisbane Courier*, 4 August 1931).

The mill was situated beside the rail lines and a separate track was constructed to service the mill. The initial production rate of seven sacks of flour per hour had doubled within a year. The flour was sold to local bakers and merchants throughout Queensland.

When the Albion Flour Mill ceased production in 2004, it was Brisbane's only working flour mill and had been in operation for more than 70 years.



3

DUNAVERTY

This finely decorated timber house was built in 1887 by Archibald McNish Fraser. The house was built during Queensland's 'boom' era of the 1880s. One of the unusual features of this house is the personalised detailing throughout that reflects Fraser's Scottish background. Scottish motifs can be seen in the verandah cast iron lacework, window and entry brackets, and in the stair stonework. Within the house, thistle motifs feature in the ceiling roses and fan lights above the doors, which also has carved names of Mrs Fraser and three of their five children.

Fraser was a Scottish migrant who made a name for himself in the Brisbane real estate industry. His company, the Onward Real Property and Auction Mart, was one of the most successful in Brisbane in the 1880s. In 1887, Fraser was described in the newspaper as owning "one of the largest real estate property businesses in the city, and a few more years' prosperity at the present ratio of increase will probably make him a millionaire" (*Queensland Figaro and Punch*, 20 August 1887).



Decorative detailing on Dunaverty, Brisbane City Council

When the economic depression hit in 1893, Fraser and his family moved to West End to be nearer to his property developments.

This is a private residence. Please do not enter.



HAMPTON

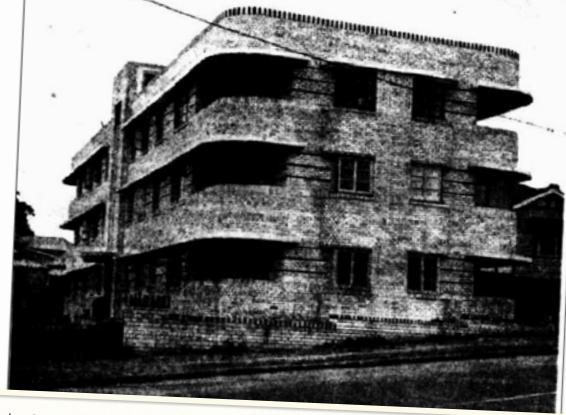
Court

Hampton Court was designed by Edward J Weller, a young Brisbane architect who, after travelling overseas, helped introduce the latest European architectural style of Functionalism to Brisbane in the 1930s. This emerging style broke with past architectural traditions and often featured clean lines, simple geometric shapes and rounded corners.

When built, Hampton Court was celebrated as being one of the most modern designs in Australian architecture. It was reported that "even Sydney... cannot boast many structures with more artistic and up-to-date features than Hampton Court, a block of twelve ultra-modern flats rising up from an island block on New Sandgate Road" (*The Truth*, 5 June 1938).

This set of flats was built in 1938 along the tram route and was an unusual example of Functionalist architecture in Brisbane at the time. Traditionally, Brisbane living consisted of individual timber houses with backyards, so multi-unit dwellings were seen as a novel form of housing. Naturally, the introduction of the apartment block to Brisbane was not without its critics.

HAMPTON COURT, CLAYFIELD Modern Flats Dominating the Heights



Sunday Mail, 10 July 1938

Flats were generally marketed to single people and childless couples and some believed that 'flat' living would degrade the family unit and encourage 'lax' morals. Despite this, apartment living soon became fashionable and new architect-designed apartment blocks began to appear in inner-city suburbs.

The Art Deco sculpture at the top of the façade was designed by Weller's wife, Marguerite Weller, who was a successful Brisbane artist.

Although there have been several alterations made to the flats over the years, including the replacement of the windows, Hampton Court remains an imposing presence on the rise of the hill.

HIGHLANDS

This house is one of the earliest remaining in the area. It was built in 1869, by Benjamin Brookes, a successful ironmonger. When first built, it was a small four-roomed house situated within a nine-acre property. In 1879, the property was sold to the Honourable William Graham, Queensland Parliamentarian from 1875 until 1892. Graham extended Highlands by adding several new rooms, expanding the verandah and building a semi-detached kitchen.

The historic home was featured in *The Queenslander* series 'Brisbane's Historic Homes' in 1930. The article attempted to give a sense of the house's hidden character:

"When passing along the main New Sandgate Road one gets no indication of the presence of this fine old stone bungalow, hidden away somewhere beyond the sequestered drive between the fine old oak trees, which were well grown as far back as 1879"

(*The Queenslander*, 4 September 1930).



Highlands, a residence in Albion, Brisbane, 1930, State Library of Queensland, Negative No. 16487

After a succession of owners, Highlands was bought by the Catholic Church in 1926 and became home to the Christian Brothers when St Columban's boys' school opened in 1928.

Today, Highlands is part of a new private residential precinct with two other important heritage buildings on the site owned by Aveo Retirement Village - Whytecliffe and O'Driscoll Hall.

This is a private residential complex. Please do not enter.

6

WHYTECLIFFE

The development of Albion followed a pattern that was common across Brisbane in the mid-to-late 19th Century. Wealthier residents bought the land on the rises and apexes of hills, ensuring breezes, views and protection from flooding and waste run-off. The less wealthy purchased land at the base of the hills.

Robert Little, Queensland's first Crown Solicitor, built his grand house in 1876. He named it Whytecliffe, inspired by the nearby white cliffs at Petrie's quarry. The two-storey brick house had 22 rooms, verandahs on both levels, a shingle roof and held a prominent position on the top of the hill, overlooking Albion and Breakfast Creek. Originally, the front entrance was reached from the other side of the hill, where a tree-lined avenue led up to the house.

After Little's death in 1890 and his widow moving away, the house was used for several different purposes. The Brisbane High School for Girls (later Somerville House) used the house as a boarders' residence from about 1899 until 1903, and Von Koenigswerder's Naturopathy Sanatorium occupied the residence from 1906 to 1907.

Throughout the 1920s and into the 1930s, it was Mrs Rosendorff's guest house. Under Mrs Rosendorff's management Whytecliffe became a centre of social activity in Albion. Dances were frequently held:



Gracious Residence, Whytecliffe, at Albion, 1930
State Library of Queensland, Negative No. 199905

"An enjoyable dance was held at Whytecliffe... when bachelors entertained a number of friends. Dancing took place in the dining hall, which was artistically decorated with quantities of flowers and gaily coloured balloons. Miss Jean Mactaggart's orchestra contributed dance music"

(The Brisbane Courier, Monday 23 January 1928).

In March 1931, a miniature golf links was opened at Whytecliffe, providing another reason for a party: "Games were enjoyed and an orchestra, stationed on the verandah, rendered selections"

(The Brisbane Courier, 9 March 1931).

In 1959, the Catholic Church bought Whytecliffe and it became the monastery for the Christian Brothers. Today, Whytecliffe is part of a new private residential precinct with two other important heritage buildings on the site owned by Aveo Retirement Village – Highlands and O'Driscoll Hall.

This is a private residential complex. Please do not enter.



7

O'DRISCOLL

Hall

Construction of this impressive two-storey brick school building began in 1926, following the Catholic Church's purchase of Highlands.

Under Archbishop James Duhig's leadership (1917-1965), an unprecedented amount of property acquisition and building was undertaken by the Catholic Church across Brisbane. 'Duhig the builder', a term of endearment used by his contemporaries, was renowned for purchasing prime sites (often on the crest of hills) on behalf of the Catholic Church for construction of new churches, schools and hospitals. Throughout his career, Duhig was responsible for building more than 400 major buildings in Brisbane.

St Columban's Boys' School was officially opened in January 1928, with a grand ceremony attended by the Papal Delegate, Archbishop Bartolomeo Cattaneo, along with 6000 Brisbane residents. The new school building, designed by Hennessy, Hennessy and Co, was described by Archbishop Duhig as having been



Sir James Duhig,
Archbishop of Brisbane,
Undated, State Library of
Queensland, Negative No.
195199

"designed in really classical style with features that would make it stand out as one of the most commanding and beautiful architectural ornaments of the district" (*The Brisbane Courier*, 6 December 1926).

The school was established as a result of crowded conditions in the inner-city Catholic boys' schools and the need for educational facilities in the suburbs. Under the Christian Brothers' leadership, St Columban's Boys' School provided high-quality education to boys in Albion until it was relocated to Caboolture at the end of 1996.

Today, O'Driscoll Hall is part of a new private residential precinct with two other important heritage buildings on the site owned by Aveo Retirement Village – Highlands and Whytecliffe.

This is a private residential complex. Please do not enter.



Crosby Park and

CHINESE MARKET

Gardens

In 1924, the Hamilton Town Council purchased the land that is now Crosby Park. Before then, it had been part of the Fox family's property Broxtowe. The family house was built in the 1870s and continued as the Fox home until 1909, when it was destroyed by fire. No one was hurt in the fire, but the house was never rebuilt.

In the 1880s, some of the land between what is now Crosby Park and Breakfast Creek was home to many Chinese immigrants who established market gardens on the flat, rich land. Although the Chinese people in Brisbane made up less than a quarter of one per cent of the population, they provided the town with the majority of their fresh fruit and vegetables. Nevertheless, there was a strong anti-Chinese sentiment in Brisbane during this period. This racially-based hatred was fuelled by vitriolic anti-Chinese media reports in the local newspapers.

In July 1887, an 'anti-Chinese movement' meeting was held in the old Town Hall in Queen Street. One speaker was reported to state that "The Chinese... bought nothing here, and took the wealth from the country away... He reviewed the social condition of the Chinese, and urged the meeting to stand together like Britons and drive the curse away" (*The Brisbane Courier*, 29 July 1887).



Joss House,
Breakfast Creek,
1886, State Library
of Queensland,
Negative No. 10124

This hatred came to a head in May 1888, when a 2000-strong mob rampaged through the city and into Fortitude Valley, ransacking Chinese stores, smashing windows, damaging Chinese homes and assaulting any Chinese person unlucky enough to be on the street at the time.

Despite these conditions, the Chinese community built one of Brisbane's most distinctive and ornate buildings, the Holy Triad Temple. Situated close to Breakfast Creek and the market gardens (now Higgs Street behind the Breakfast Creek Hotel), much of the temple was constructed from traditional materials imported from China. Once opened in 1886, the temple became an important centre for the Chinese community in Brisbane and remains so today.

Thankfully, Brisbane now celebrates its multiculturalism and the Chinese community holds a valued place in our history.

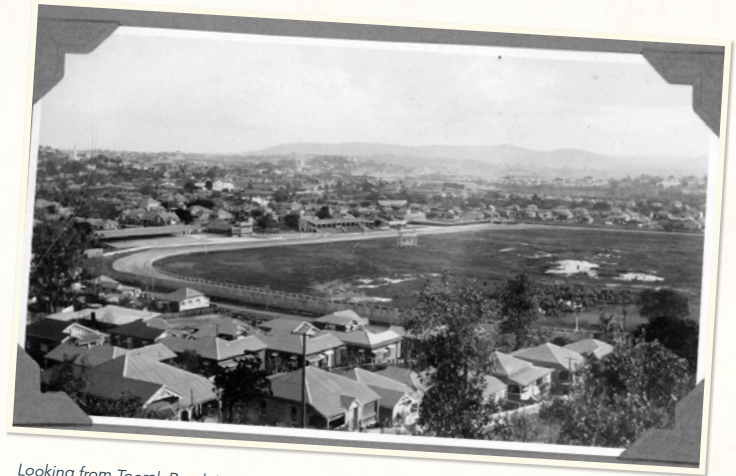
ALBION PARK

Racecourse

Between Breakfast Creek and Crosby Park is the Albion Park Racecourse, which was formed in 1909-10. The racecourse is one of three established in the area – the other two were Eagle Farm (1865) and Doomben (1933). Before 1909, the site was one of Brisbane's favourite amusement parks, known as the Breakfast Creek Sports Ground.

The amusement park had a wide array of sporting facilities, including a cricket oval, cycle track, tennis courts, and a lake that was large enough to hold swimming tournaments and model boat races. One of the most popular attractions was a switchback railway – an early version of a roller coaster. This snippet reports the fun people were having at the park:

"The swings went merrily, the switchback railway cars along the undulating lengths of line carried shouting and laughing loads of youths and maidens, while dozens of chaps disported themselves in the cool tempting water of the miniature lake" (*The Brisbane Courier*, 27 December 1889).



Looking from Toorak Road, Hamilton, over Albion Racecourse, Brisbane, 1920, State Library of Queensland, Negative No. API-086-0001-0008

On Monday nights throughout summer, a series of popular concerts were held at the park and attended by up to 6000 people. The entire park was lit by electric lamps, a novel technology at the time.

By the early 1900s, the park was running at a loss and was closed. It was replaced by the Albion Park Racecourse.

US CHEMICAL*Warfare Service*

During World War II, intense wartime industry occurred in Albion, particularly in Crosby Park and the land along Breakfast Creek. Following the attack on Pearl Harbour on 7 December 1941, the US forces were redirected to Australia. On 22 December 1941, the USS *Pensacola*, heading a convoy of US naval ships carrying troops and equipment, arrived at Brett's Wharf, Hamilton. The General Headquarters South West Pacific Area, under the command of US General Douglas MacArthur, was also moved to Brisbane in July 1942. By December 1943, Brisbane was host to more than 75,000 US troops awaiting deployment to the conflict in the Pacific.

The US Army Chemical Warfare Service (CWS) chose Crosby Park as the site for the Chemical Warfare Impregnation Facility. At the facility, sets of uniforms were treated with chemicals in an attempt to protect front line troops from possible enemy chemical weapon attacks. The CWS also set up one of only two facilities in the South West Pacific for the repair of gas masks in Crosby Park. Large amounts of extremely dangerous chemicals and gases were held and used at the facility. Its proximity to the



1946 aerial photograph, Brisbane City Council

surrounding residential area reflects how vital and urgent this type of work was during the war.

Additionally, Crosby Park was used as the US Army's experimentation and testing facility for their chemical-based flame-throwers. In the early part of the Pacific Campaign, it became apparent that these weapons could not handle the humidity and heat, which caused corrosion and deterioration. The Crosby Park facility developed a superior weapon that could also be submerged in water and was later deployed to US Army divisions.

WORKERS'*Cottages*

Ellen Street is one of Albion's most historic streets, with a streetscape of small workers' cottages built in the late 1800s.

Numbers 23 and 25 Ellen Street are the earliest surviving houses in the street and were both constructed in 1885. Thomas Sullivan and John Maynard bought a number of 11-perch (278 m²) blocks along this side of Ellen Street to build a series of workers' cottages as rental properties. This speculative development was undertaken in response to a housing demand generated as more jobs were created by the expansion of industry into the area and the extension of the railway.

In 1885, the Queensland Government introduced the *Undue Subdivision of Land Prevention Act 1885*. The government had voiced concerns about over-population in inner-city areas from as early as the 1870s. The construction of small tenements and tiny cottages on very small parcels of land increased the risk of disease and fire throughout inner-city suburbs. With the passing of the 1885 legislation, it became illegal to subdivide land into lots of less than 16 perches (405 m²).



Boy and girl walking up Lever Street, Albion, Brisbane, ca 1910, State Library of Queensland, Negative No. 35698

Numbers 23 and 25 Ellen Street were built just before this legislation was passed.

By 1890, Ellen Street was home to three labourers, a miller, a horse-collar maker, a bricklayer and a plasterer. These small cottages not only contribute to Albion's character, but also represent this important era in Brisbane's history.

These are private residences. Please do not enter.

12

The Manchester Unity

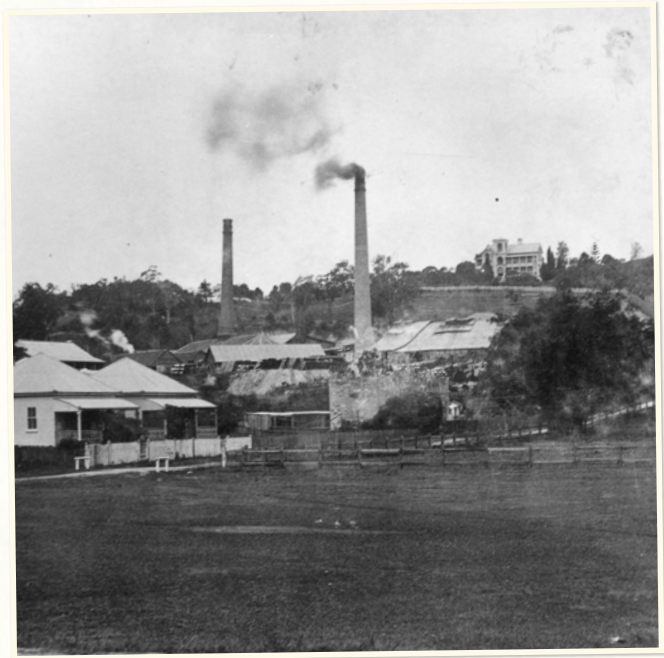
INDEPENDENT ORDER OF ODDFELLOWS

Lodge Hall

This modest timber hall was built in 1927, as a hall for the Prince Albert Victor Lodge chapter of the Manchester Unity Independent Order of Oddfellows (MUIOOF), which established itself in Albion in 1886. Prior to the construction of this hall, the lodge held fortnightly meetings in the Albion Public Hall. This venue was eventually considered unsuitable and in the 1920s, funds were raised to construct a dedicated lodge hall.

The MUIOOF was originally founded in Manchester, England in 1810 as a 'benevolent fraternity' organisation. It provided a form of medical and funeral insurance to help offset the high costs of sickness and death during an era of poor public health standards, high funeral costs and no government funding for hospitals and medical expenses. Members made regular contributions to their lodge funds in return for payment upon death or illness to either themselves or their dependants.

In an area dominated by industry and working class people, the MUIOOF was an important part of many Albion residents' lives. The lodge met regularly in the hall until it was sold in 1983.



Industry and Workers' Cottages, Albion, 1908, State Library of Queensland

STEPHAN'S

Saddlery

Stephan's Saddlery was first established circa 1895. It included a retail premises with a Sandgate Road frontage for the sale of equipment and a workshop at the back to manufacture goods.

When Carl Albert Stephan established his business, the main means of transportation was horse-powered. Stephan manufactured high quality harnesses for various horse-drawn vehicles such as delivery vans, trams, wagons, sulkies and buggies as well as saddles and other related equipment. As demand was high in this era, the business flourished.

During World War I, great advances in automobile technology were made. Cars became more affordable after the war as they were able to be mass-produced. As motor car ownership increased in the 1920s, the use of the horse-drawn carriage diminished. Instead of suffering, Stephan's Saddlery thrived. This may have been due to its close proximity to Albion and Eagle Farm racecourses and the continued demand for high quality saddles and harnesses in outback Queensland.



Horse-drawn deliveries, Albion Bakery, Albion, Brisbane, ca 1925, State Library of Queensland, Negative No. 57652

As a result of the company's prosperity in the interwar period, the Sandgate Road premises were expanded. Constructed at the height of the Great Depression, the new two-storey brick retail premises was designed with contemporary Art Deco features that belied the harsh economic environment of the time and gave the impression of stability and prosperity. The factory behind the main shop was also expanded.

Stephan died in 1938, but his company continued to flourish thanks to his sons Herbert and Ernest, who carried on the family business. The property was sold in 1958. However, the company continues to manufacture high quality products for horses, although at a different location on the outskirts of Brisbane.

ALBION

Building

In the 1920s and 1930s, Albion experienced growth as the surrounding suburbs and those to the north expanded. Urban improvements were made and in 1927-28 the Abbotsford Road Bridge at the Albion Fiveways was constructed to accommodate increased road traffic from the suburban expansion to the north.

The Albion Building reflects the prosperity in Albion at the time of its construction. In 1928, businesses along this section of Sandgate Road were thriving. There were five general stores, four dressmakers, two newsagents, two chemists, two butchers, a tobacconist, a hairdresser, a boot maker and a baker. There was also the hotel, several banks, a café, a police station and a picture theatre.

This set of shops was built in 1927 and replaced an earlier two-storey set of timber shops. They were designed by the Brisbane architectural firm of Hall and Devereux. Many of the original features still remain, including some of the original shop fronts with recessed entries, tasteful geometric design tiling and leadlight windows.



Albion Corner, 1909, State Library of Queensland, Negative No. 47139

WYLLIE'S

Buildings

This attractive brick building was built between 1910 and 1911 for successful Albion hardware retailer, JR Wyllie and Sons.

James R Wyllie first began trading as a plumber in Brisbane in the 1900s. In 1910 he bought the land on Sandgate Road. Once built, the business began trading as 'JR Wyllie and Sons' and not only sold plumbing supplies, but also manufactured them. By the 1930s, the business expanded to sell electrical goods and light fittings.

JR Wyllie and Sons grew into a significant local and state-wide business throughout the next five decades and became one of, if not the largest hardware and household supply shop in Brisbane's northern suburbs. They had agents in provincial cities such as Ipswich, Mackay, Mount Isa, Townsville and Cairns and also supplied goods to the Northern Territory and Papua New Guinea.

Apart from being a successful businessman, Wyllie served as an Alderman for the Windsor Town Council from 1913 to 1924.



Alderman JR Wyllie, 1913, Brisbane City Council, Image No. BCC-B120-32844

He was also a member of the Works, Lighting and Parks Committees for most of that decade.

The business continued to operate until the building was sold in 1981.

ALBION

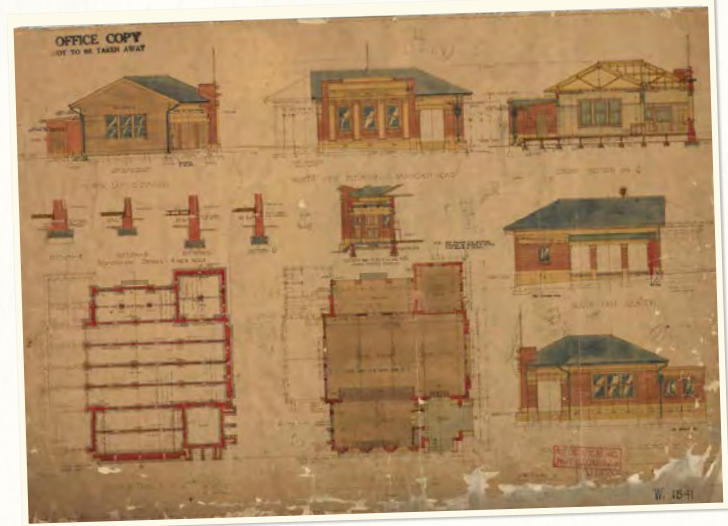
Post Office

Before this beautiful masonry building was built as the Albion Post Office in the 1920s, Albion's postal services were run from one of the shops along Sandgate Road. As more people moved into Albion to live and work, a centrally located post office was needed. Most post offices at this time were not permanent and were often located in stores, railway stations or hotels.

"We understand that a Post Office is about to be established at Challinor and Neale's Store, Breakfast Creek. An office at that place will be a great convenience to a large number of people" (*The Queenslander*, 14 October 1876).

In 1890, a permanent post office was constructed on the corner of Sandgate Road and Anstey Street (then known as George Street). This small timber building catered for both mail and telegraph services.

By the 1920s, the timber building proved inadequate to service the area's growing population. The new brick post office was built between 1925 and 1926:



Architectural drawings, Albion, New Post and Telegraph Office, Commonwealth Department of Works and Railways, 1924, National Archives of Australia, Item No. 1709606

"While every reasonable effort has been made to give the building an attractive appearance, the main object – to provide a thoroughly up-to-date structure, giving every facility for the quick despatch of postal business – has not been sacrificed" (*The Brisbane Courier*, 26 February 1925).

The building is no longer used as a post office and was sold in 1995. It has since been converted into offices.

ALBION

Public Hall

This two-storey masonry building was built as the Albion Public Hall in 1887 and is indicative of Albion's rise as a prosperous suburban centre. As with other public halls built at this time, the hall was used for various events including dances, concerts and meetings, as well as by the Albion Lodge of Free and Accepted Masons.

When first opened, the hall was described as "finely situated on the main road, is a substantial brick building, and is quite a credit to the district. It has two shops in front, with a lodge-room overhead, and at the rear is a roomy stage, which is already fitted up with most of the scenic appurtenances" (*The Brisbane Courier*, 10 May 1888).

The Albion Public Hall official opening was held on 9 May 1888 with a fancy dress ball and supper. The orchestra was conducted by Signor Benvenuti, an important figure in Brisbane's early music scene. Nicknamed the 'modern Paganini', Benvenuti first opened a violin school in Brisbane after emigrating from Padua in Italy.



Albion Public Hall, Brisbane, 1909, State Library of Queensland, Negative No. 47138

By working closely with other influential musicians, he was able to establish musical groups, hold cultural events and promote patronage of this art form in Brisbane.

In the early 1920s, the hall was converted into a picture theatre. For many years it was known as the Empire Picture Theatre and from 1934, it was the Capitol Theatre.

State

BUTCHER

shop

Built in 1889, this two-storey building to which the striking Art Deco flats were added in the 1930s, was originally the premises for Daw and Slack's Butcher shop.

Interestingly, in 1917 the shop was leased by the Queensland Government as a State Butcher shop:

"The Government has just opened its eighth butcher shop in the metropolitan area. This is at Albion... The total of these shops in the State has now reached 18"
(*Queensland Times*, 14 December 1917).

Under the *State Enterprises Act of 1918*, State Butcher shops were established by the Queensland Labor Government as a means of influencing the prices of household staples, such as meat and sugar. From 1915 to 1925, the Queensland Government established or acquired a number of businesses to provide competition against possible monopolies and to offer cheaper rates. As well as butcher shops, the scheme included fish shops, the 'State' brand jam and sauce factory, a sugar mill and some cattle stations.



Shops in Albion, Brisbane, 1909, State Library of Queensland, Negative No. 47137

Ninety State Butcher shops were established throughout Queensland, and the Albion State Butcher was one of the first.

By 1929, the scheme had become a financial drain on the State's economy and was subsequently stopped. The Albion State Butcher shop was closed in 1929, and one year later, the shop resumed its use as a privately-owned butcher shop. The renovations, which added three shops and two flats, and included a new Art Deco façade, were undertaken in the late 1930s.



Brisbane City Council Information
GPO Box 1434
Brisbane Qld 4001

CA14-3664807-03-263
© Brisbane City Council 2014

For more information visit
www.brisbane.qld.gov.au
or call (07) 3403 8888



[Facebook.com/BrisbaneCityCouncil](https://www.facebook.com/BrisbaneCityCouncil)



[@brisbanecityqld](https://twitter.com/brisbanecityqld)