

AMPLIFY ME!

RUBY.H

AMPLIFY ME!

Outdoor Gallery
Program

21 November 2025 – 25 October 2026



Dedicated to a better Brisbane



Marcus Nunn and Vinnie in front of *All the Pets I Wish I Could Meet, 2025*.

Cover: *AMPLIFY ME!*, 2025 by Ruby Herrenberg and Designfront.

AMPLIFYING

Voices through art

Brisbane's Outdoor Gallery program is once again bringing colour, creativity and connection to the heart of our city through the latest *AMPLIFY ME!* exhibition.



We want to create more for residents and visitors to see and do and our Outdoor Gallery encourages local artists to let their creativity spill out from traditional galleries and into everyday life, where people can enjoy their art in the streets of Brisbane for free.

AMPLIFY ME! shines a spotlight on talented Brisbane artists with lived experience of disability, celebrating the power of individual expression through lightboxes, banners and projections across the CBD.

We're proud to once again shine a spotlight on the talented artists here in Brisbane, while making art accessible for everyone.

So whether you're passing by or planning a day out, take a moment to discover inspiring artworks that celebrate what makes Brisbane such a great place to live, work and relax.

Adrian Schrinner

Lord Mayor of Brisbane

Outdoor Gallery

Our Outdoor Gallery transforms Brisbane's laneways, city streets and car parks into imaginative, curious and engaging spaces. Comprising light boxes, banners, vitrines, and evening projections, the Outdoor Gallery displays art outside in city streets, instead of inside on gallery walls. Our Outdoor Gallery program started in 2013, and is internationally recognised for its place in our community.



Ruby Herrenberg with *Amplify Me!*
Amplify You!! 2025 Artist Collaboration
located in Edward Street.

AMPLIFY ME!

Our latest Outdoor Gallery exhibition *AMPLIFY ME!* is a celebration of local Brisbane artists with a lived experience of disability, showcasing their artwork in accessible outdoor spaces across the city.

Grounded in inclusive arts practice, the exhibition promotes collaboration, barrier-free creativity and lasting connections, while encouraging inclusion and social change in Brisbane's cultural landscape.

"The artists' unique practices and creative voices deeply informed the curatorial framework of this exhibition, shaping every aspect with authenticity and vision. This approach moves beyond tradition, celebrating Brisbane's rich artistic diversity and thoughtfully highlighting the importance of lived experience at the heart of the city's cultural story." — Nicole Crosswell

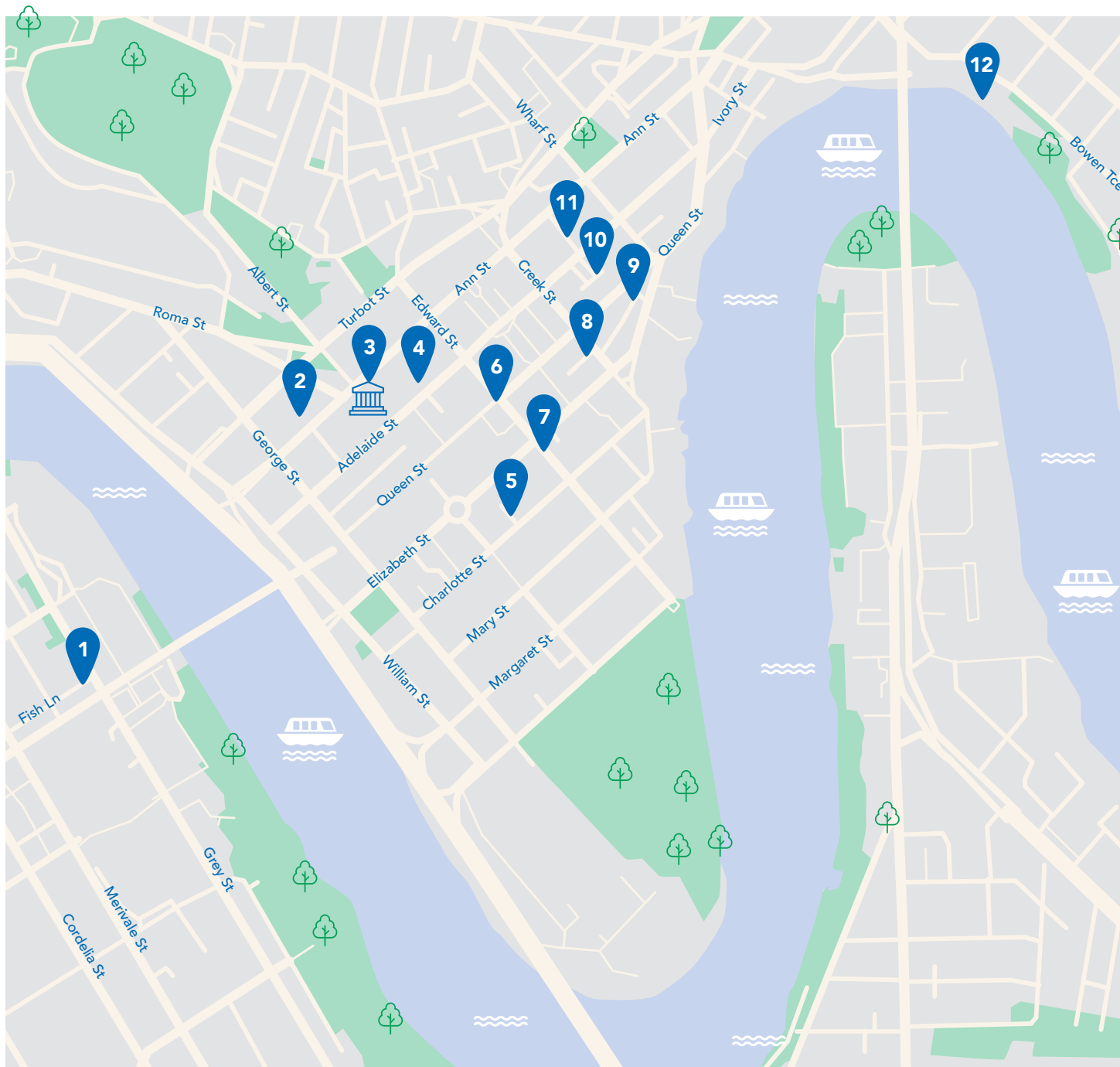


AMPLIFY ME! is curated by Nicole Crosswell and will be open from 21 November 2025 to 25 October 2026.

Share your experience of the Outdoor Gallery exhibitions and public programs using
@BrisbaneCityCouncil
@the_artistsstudio
#BNEpublicart

Scan the QR code for accessibility information, locations and opening hours.





LOCATION		ARTIST
1	Fish Lane — Light boxes	Greg Chambers
2	Heritage Lane — Light boxes	Marcus Nunn
3	Museum of Brisbane foyer — Digital screen	Ella Doyle
4	King George Square Car Park — Light boxes	Frazer Campbell
5	Irish Lane — Banner	Duane Doyle
6	Edward and Queen Streets — Vitrine	AMPLIFY ME! Collaboration
7	Edward and Elizabeth Streets — Vitrine	Marcus Nunn
8	Edison Lane — Banner	William Melrose
9	Eagle Lane — Light boxes	Ruby Herrenberg
10	Giffin Lane — Banner	Greg Chambers
11	Hutton Lane — Light boxes	Rupert Campbell, May Washington, Grace Lindeman
12	Howard Smith Wharves — Digital projection	Ella Doyle

Scan the QR code for accessibility information, locations and opening hours.





Amplify Me! Amplify You!!

Artists **AMPLIFY ME!** Artist Collaboration

Amplify Me! Amplify You!!, 2025

Location 6 Edward and Queen Streets — Vitrine

Exhibiting artists featured in this Outdoor Gallery exhibition **AMPLIFY ME!** attended a co-design workshop at the Museum of Brisbane (MoB) to explore what amplifies them as individuals and deepens their understanding of one another.

Using expanded listening and systems thinking — breaking big ideas into simple, revealing questions — they reflected, slowed down and gained fresh perspectives on themselves and each other.

Amplify Me! Amplify You!!, 2025 is a powerful collaboration between the exhibiting artists and the public, designed to spotlight and celebrate the richness of individual expression.

When the artists were asked, “what amplifies you?” one participant wrote, “Happy Life.”

These were the questions the artists responded to. Think about how you would respond to these questions:

- What is your favourite music?
- What do you like doing in your spare time?
- Who are your favourite people in your life?
- What is your favourite food?
- What makes you laugh?
- What is your favourite creative thing to do?
- What is your favourite thing to do in Brisbane?
- Do you have a favourite spot in nature you like to visit?
- What is your favourite thing to wear?
- What is your favourite movie?
- Do you have special animals or pets in your life?

Discover more online. Scan the QR code to watch, read or listen to the curator’s interview.



@rubys_art_on_stuff
@the_artistsstudio



Marcus Nunn with his artwork *All the Pets I Wish I Could Meet*.

Artist **Marcus Nunn**

All the Pets I Wish I Could Meet, 2025

Location 7 Edward and Elizabeth Streets — Vitrine

Marcus Nunn is a storyteller whose artistic practice blends classic fairytales with contemporary narratives, inspired by stories shared across cultures. His works radiate positivity and joy, without the traditional fairytale dark side, underpinned by his ethos that “everything is just perfect.”

All the Pets I Wish I Could Meet, 2025 presents a vibrant selection from Marcus Nunn’s prolific Brisbane pet portrait series.

The works capture the warmth, quirks and unique personalities at the heart of human–animal relationships, inviting city-goers to pause and celebrate the comfort, joy and sense of belonging our animal friends bring.

“My name is Marcus Nunn. I’m an artist and I live in Brisbane, Queensland, Australia. My favourite things are singing, making things, drawing, playing with Vinnie the dog, playing Wii games and spending time with my sister Lucy.”

MARCUS NUNN

Discover more online. Scan the QR code to watch, read or listen to Marcus’ interview.



@everything_isjustperfect





Ruby Herrenberg's artwork *Hey Look Ma. I Made It Series*.

Artist Ruby Herrenberg

Hey Look Ma. I Made It Series, 2025

Location 9 Eagle Lane — Light boxes

Ruby Herrenberg is a celebrated artist whose practice combines vibrant creativity with a unique blend of humour. Ruby's work ranges from bold studio pieces to major commissions and global merchandise, bringing energy and connection to every project while enriching the wider art community through workshops and collaborations.

Ruby Herrenberg's *Hey Look Ma. I Made It Series, 2025*, channels her love of text and music — especially Panic! At The Disco and Brendon Urie — through distinctive fonts and bold compositions. Installed in Eagle Lane's corporate centre, these dynamic works disrupt the everyday and invite passersby to ask, "who the bleep is Brendon?"

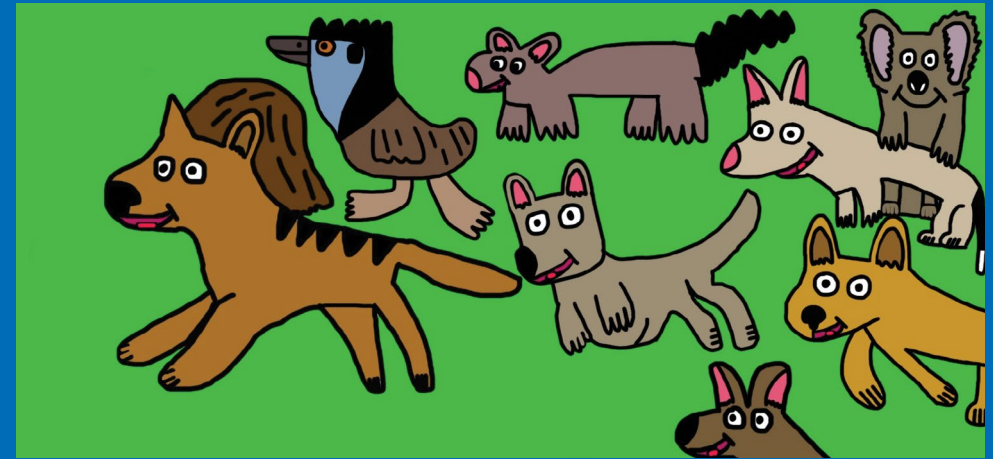
"Hi! My name is Ruby Herrenberg, and I am an artist from Brisbane. I love writing words and sometimes stay up late into the night writing and listening to loud music. My favourite band is Panic! At The Disco, and I am a big fan of Brendon Urie. My favourite colour is red. I love my dog, Bella. And I love my sisters, Honey and Ivy."

RUBY HERRENBERG

Discover more online. Scan the QR code to watch, read or listen to Ruby's interview.



@rubys_art_on_stuff



Ella Doyle's artwork *Teresa the Tasmanian Tiger*.

Artist Ella Doyle

Teresa the Tasmanian Tiger, 2024–2025

Location 3 Museum of Brisbane Foyer — Digital Screen
Location 12 Howard Smith Wharves — Projector

Ella Doyle is a Brisbane artist and advocate whose bold, colourful works explore popular culture, alternative music and the world's natural mysteries. Guided by her ethos "I believe", her practice spans digital and traditional media, advocacy and sensory design, supporting comfort, connection and inclusivity for those with diverse sensory needs.

Ella Doyle's animation *Teresa the Tasmanian Tiger, 2024–2025* is showcased across both Howard Smith Wharves and Museum of Brisbane joining two dynamic Brisbane locations that each blend heritage and contemporary culture. By presenting the work in these spaces, Doyle challenges traditional representations of the thylacine and keeps its story alive in our cultural memory, exploring the intersection of scientific fact and folklore.

"My name is Ella Doyle, and I'm an artist from Brisbane, Queensland. I like to draw, paint and do digital art. I believe in thylacines and ghosts."

I have designed my sensory room with bean bags, fairy lights, collectables, books, DVDs, plushies, ceramics, a TV, ABC kids' stuff and the OG Wiggles. I designed it for my friends."

ELLA DOYLE

Discover more online. Scan the QR code to watch, read or listen to Ella's interview.



@i_b.e.l.i.e.v.e.



Duane Doyle with his artwork *Endangered Species Series*.

Artist Duane Doyle

Endangered Species Series, 2025

Location 5 Irish Lane — Banner

Duane Doyle is a Jiman (Yiman) artist from Rockhampton whose work draws on deep ancestral roots in South Carnarvon Gorge and the Garingbal people, with the Googoobing (scrub turkey) as his totem.

Combining traditional and innovative techniques, his art explores identity, belonging and the enduring wisdom of Country as a living force.

Duane Doyle's *Endangered Species Series, 2025* sits powerfully side by side in Irish Lane, transforming the space to foster broader public understanding of ecological systems. Through traditional and contemporary arts practice, and with First Nations knowledge and deep connection to Country, Doyle's series highlights the importance of flooding in a healthy river system — essential for sustaining habitat and life.

"My grounding support has always been my Art Gang at West End Community House, and mentor, Art Mum, Sue Loveday. I have been welcomed by other arts organisations as well. My art has evolved into something I am both overwhelmed by and deeply proud of — it is a great time to be an artist in Brisbane."

DUANE DOYLE

Discover more online. Scan the QR code to watch, read or listen to Duane's interview.



@duane_doyle_art



Greg Chambers' artworks.

Artist Greg Chambers

Getting Ready for Spring, 2025

Budgie Town, 2024

Tip Next to Theme Park, India, 2023

Arcade Parlour, 2024

Get Together: It is found that there is less conflict if the species get together once a year, 2025

Run Everybody! The Penguins Have Arrived!, 2025

Location 1
Fish Lane —
Light boxes

Greg Chambers is a prolific night-time painter whose acrylic works feature bold palette knife textures, vibrant colour and playful humour.

His creative process is shaped by memory, nocturnal rhythms and sunrise walks to conclude each studio session.

Chambers' artworks for *AMPLIFY ME!* embody a frenetic energy, with dynamic bursts of colour that reflect the vibrancy of Brisbane's iconic Fish Lane. Look closer to discover titles laced with unexpected dark humour, revealing a playful edge that offsets the lively atmosphere.

"I live in a swamp with a dog and a wife, and I paint at night."

GREG CHAMBERS

Discover more online. Scan the QR code to watch, read or listen to Greg's interview.



@art_from_the_swamp



Frazer Campbell with his artwork *The Long Neck Series*.

Artist Frazer Campbell

The Long Neck Series, 2025
Samuel Beckett, 2024
Emily O'Grady WIP, 2024

Location 4 King George Square Car Park
 — Light boxes

Frazer Campbell is a Brisbane-based emerging artist known for intense, emotionally charged portraits in oils and acrylics. Influenced by literature, film and music, his award-winning work explores identity and connection through bold colour, cinematic drama and deep empathy, all shaped by his lived experiences.

The Long Neck Series, 2025, anchors Frazer Campbell's exhibition in King George Square Car Park, combining bursts of colour and cinematic storytelling and paired with the dramatic portraits of *Samuel Beckett, 2024* and *Emily O'Grady WIP, 2024*. The narrative depth of Campbell's works is heightened by the carpark's exposed concrete, utilitarian lighting and echoes of the city outside.

"I am intrigued by certain faces, especially expressions at the unhappier end of the emotional spectrum: existential angst, psychic dread."

FRAZER CAMPBELL

Discover more online. Scan the QR code to watch, read or listen to Frazer's interview.



@frazercampbell_artist 



William Melrose with his artwork *Smashed Olive*.

Artist William Melrose

Smashed Olive, 2022

Location 8 Edison Lane — Banner

William Melrose is an emerging artist whose expressive drawings highlight environmental conservation, exploring the lives of endangered species as well as creatures of his own imagination.

His practice centres on a love of graphite and drawing, capturing subjects with immediacy and insight to inspire deeper connections between people and nature.

William Melrose's *Smashed Olive, 2022*, features delicate lines and colour that symbolise the fragility of the Olive Ridley turtle species.

Showcased in Edison Lane — a site of industrial significance — the artwork creates a striking contrast, highlighting the vulnerability of the natural world and inviting reflection on our responsibility to protect it.

"Taking care of nature is very important. I share that message with people through my artwork."

WILLIAM MELROSE

Discover more online. Scan the QR code to watch, read or listen to William's interview.



@the_artistsstudio 



Hutton Lane artworks.

Artists Rupert Campbell, May Washington, Grace Lindeman

AMPLIFY ME! introduces three artists, Rupert Campbell, Grace Lindeman and May Washington, whose diverse practices and perspectives shape the Hutton Lane installation.

Visually linked by a connecting line joining each light box, the work symbolises the invisible thread that forms in creative and inclusive spaces. This reflects the artists' intuitive understanding of expanded listening, the resilience and confidence gained through authentic creative practice. Connected by creativity, Campbell, Lindeman and Washington navigate their artistic journeys and celebrate the power of a supportive community.



Rupert Campbell's artwork.

Artist Rupert Campbell

Bananas and Honey, 2025
Twin Peaks: The Return, Episode 8, 2025
Pillars, 2025

Location 11 Hutton Lane — Light boxes

Rupert Campbell's meditative process uses layered colours and pulsing mark-making to create vivid compositions.

His work balances autonomy, connection and is inspired by operatic stage scores, digital media and music.



Pillars, 2025

"Thursday = art at Nicole's = colour, calm, friends, family, a garden goodbye."

RUPERT CAMPBELL

Discover more online. Scan the QR code to watch, read or listen to Rupert's interview.





May Washington with her artwork.

Artist **May Washington**

The Fan Girling Series, 2025

Location 11 Hutton Lane — Light boxes

May Washington is an emerging artist known for miniature, vibrant portraits that combine expressive colour and lively brushwork. Her paintings, inspired by both personal acquaintances and pop culture figures, capture the essence of her subjects and her passion for connection through art.



The Fan Girling Series, 2025

"I like painting because it is a happy place of mine and it allows me to express my emotions through the display of people and experiences I love."

MAY WASHINGTON

Discover more online. Scan the QR code to watch, read or listen to May's interview.



@may_washington_ 



Grace Lindeman with her artworks.

Artist **Grace Lindeman**

Galaxy Ocean, 2025
Yellow Leaves Mixed with Green, 2025

Location 11 Hutton Lane — Light boxes

Grace Lindeman is an emerging Brisbane artist whose work celebrates diversity, inclusion and individuality. Using digital, acrylic and watercolour mediums, she creates imaginative characters and narratives that explore identity, belonging and advocacy for environmental and LGBTQI+ rights.

"Creating art is a way for me to express myself and my thoughts, it also takes me to places that are beyond reality."

GRACE LINDEMAN



Galaxy Ocean, 2025

Discover more online. Scan the QR code to watch, read or listen to Grace's interview.



@gracie_the_monster_artist 



Marcus Nunn's *All the Pets I Wish I Could Meet Series*.

Artist Marcus Nunn

All the Pets I Wish I Could Meet Series, 2025

Location 4 Heritage Lane, Ann Street — Light boxes

Marcus Nunn is a storyteller whose artistic practice blends classic fairytales with contemporary narratives, inspired by stories shared across cultures. His works radiate positivity and joy, without the traditional fairytale dark side, underpinned by his ethos that *"everything is just perfect."*

All the Pets I Wish I Could Meet, 2025 presents a vibrant selection from Marcus Nunn's prolific Brisbane pet portrait series.

The works capture the warmth, quirks and unique personalities at the heart of human-animal relationships, inviting city-goers to pause and celebrate the comfort, joy and sense of belonging our animal friends bring.

"My name is Marcus Nunn. I'm an artist and I live in Brisbane, Queensland, Australia. My favourite things are singing, making things, drawing, playing with Vinnie the dog, playing Wii games and spending time with my sister Lucy."

MARCUS NUNN

Discover more online. Scan the QR code to watch, read or listen to Marcus' interview.



@everything_isjustperfect



Greg Chambers' artwork *Tiger Magic*.

Artist Greg Chambers

Tiger Magic, 2025

Location 10 Giffin Lane — Banner

Greg Chambers is a prolific night-time painter whose acrylic works feature bold palette knife textures, vibrant colour and playful humour.

His creative process is shaped by memory, nocturnal rhythms and sunrise walks to conclude each studio session.

Tiger Magic, 2025, located in Giffin Lane — a laneway that lends a sense of discovery and intrigue — entices unsuspecting passersby to venture further.

Witnessing Chambers' dynamic work in this hidden urban setting amplifies the surprise, movement and context, transforming the space into a striking showcase for colour and artistic energy.

"I live in a swamp with a dog and a wife, and I paint at night."

GREG CHAMBERS

Discover more online. Scan the QR code to watch, read or listen to Greg's interview.



@art_from_the_swamp

What amplifies you?

What is your favourite music?

What do you like doing in your spare time?

Who are your favourite people in your life?

What is your favourite food?

Do you have special animals or pets in your life?

AMPLIFY ME!

What makes you laugh?

What is your favourite creative thing to do?

What is your favourite movie?

Do you have a favourite spot in nature you like to visit?

What is your favourite thing to do in Brisbane?

What is your favourite thing to wear?

Public programs

As part of the exhibition you can join one of the many public programs, take a DIY-tour, watch, read, or listen to the artist interviews and more.








Dedicated to a better Brisbane

Brisbane City Council
GPO Box 1434, Brisbane Qld 4001



Printed on sustainable paper
IMAP-200000154-07-7378
©2026 Brisbane City Council

 brisbane.qld.gov.au
 3403 8888

 /BrisbaneCityCouncil
 @brisbanecityqld
 @brisbanecitycouncil