



Dedicated to a better Brisbane



March 2026

Archerfield Road, Azalea Street and Pine Road intersection upgrade

Project update

We're upgrading this intersection to help residents and visitors travel through Inala and Richlands safely and efficiently. The intersection carries nearly 22,000 vehicles every day, making it one of the area's busiest routes.

This upgrade will include:

- ✓ new traffic lights
- ✓ dedicated turning lanes
- ✓ pedestrian crossings and connections.

Community feedback

We shared a concept design in October 2025. Following this, the community told us they want to see:

- improved safety for all road users, especially during peak times
- safe crossings with better connections for people walking and riding
- a clear road layout with designated turning lanes
- less waiting and smoother traffic flow through the intersection
- timely completion of the upgrade with minimal disruption.

What's new

We're progressing the next stage of the design with some additional features as a result of community feedback. These include:

- **better walking and cycling connections** – safer, easier and more direct paths for people walking and riding
- **less traffic build-up** – 2 northbound lanes to help reduce queues and keep the intersection moving.

Frequently asked questions

Why aren't we building a roundabout?

A roundabout was considered, but it would require significantly more land and is less efficient for the high traffic volumes at this intersection. Traffic signals are a better fit for the space available and provide safer, controlled crossings for people walking and riding.

How will safety improve for people walking and riding?

The upgrade will include pedestrian crossings and pram ramps on all sides of the intersection, improving safety and connections to nearby walking and cycling paths.

Why isn't construction starting sooner?

Finalising the design includes planning for utility relocations and completing required land approvals. Completing this design work now will help reduce impacts on the local community during construction.

What's next?

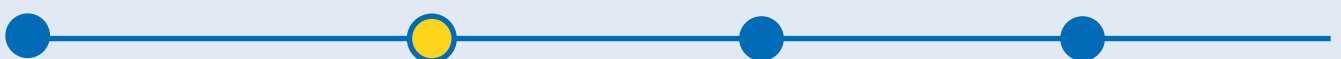
We're planning to share a final design in mid-2026 with construction expected to start from early 2027.

October 2025
Concept design (complete)

Now
Preliminary design

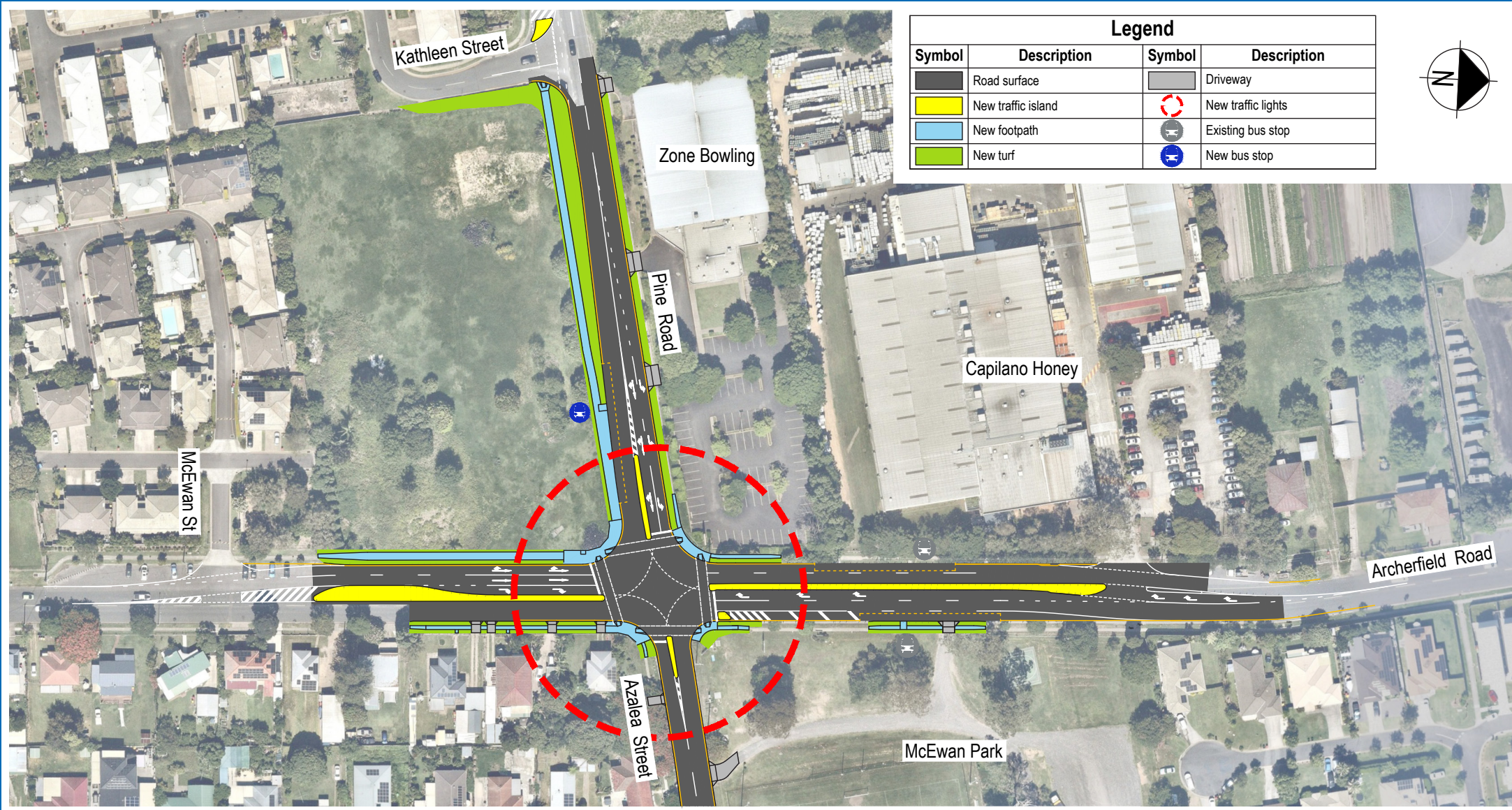
Mid-2026
Final design

2027
Works start



Archerfield Road, Azalea Street and Pine Road intersection upgrade

Preliminary design



Scan the QR code to find out more and register for project updates.

We encourage anyone who lives, works or travels through the area to register for project updates. Chúng tôi khuyến khích bất kỳ ai sống, làm việc hoặc đi qua khu vực này đăng ký để cập nhật thông tin về dự án.

Call us: 3178 5413 (Monday to Friday 8.30am-4.30pm) (giờ làm việc) or 3403 8888 (24 hours, 7 days) (24 giờ, 7 ngày)

Email us: cityprojects@brisbane.qld.gov.au

Visit: brisbane.qld.gov.au and search 'Archerfield Road, Azalea Street and Pine Road'
 Truy cập brisbane.qld.gov.au và tìm kiếm 'Archerfield Road, Azalea Street và Pine Road'