

# Brighton Foreshore Parklands - final concept plan

## Vision and objectives



Dedicated to a better Brisbane

Brisbane City Council has prepared a concept plan for the Brighton Foreshore Parklands to improve its recreational potential for residents and visitors. The proposed improvements will provide opportunities for people to continue to enjoy this beautiful scenic location while retaining its relaxed laid-back character.



Objectives	Brighton Park	Decker Park	Brighton Health Campus	Sandgate Foreshores Park
<b>Community</b> Maximise opportunities for recreation and relaxation.	Retain as a quiet and natural alternative to other busier park locations along the foreshore.	Retain all existing facilities as a district recreation park and focal point for community recreation in Brighton. Provide reconfigured parking along 25th Avenue and Flinders Parade.	Maintain the existing easement which connects the foreshore parklands on either side.	<div>Maximise the recreational potential of the parkland along the Brighton foreshore and retain its relaxed character by:</div> <ul style="list-style-type: none"><li>• improving access to facilities for people with all abilities</li><li>• providing a consistent wide pathway</li><li>• providing park furniture at more regular intervals</li><li>• maximising useable flat lawn areas</li><li>• improving access to beach and tidal flats</li><li>• providing more shade.</li></ul>
<b>Environment</b> Increase the habitat values and scenic amenity of the foreshore parklands.	Provide additional native habitat planting within the parkland and protect natural values.	Provide additional tree planting within the park to provide shade and habitat for native fauna.	Maintain the existing shade trees lining the pathway and plant new trees in gaps.	<div>Retain and enhance the natural values of the parkland and tidal flats by:</div> <ul style="list-style-type: none"><li>• incorporating more low-level native vegetation</li><li>• providing opportunities to learn about the natural environment</li><li>• exploring the feasibility of natural beaches</li><li>• improving the health of existing trees</li><li>• ensuring migratory bird life is not disturbed.</li></ul>
<b>Resilience</b> Reduce the risk of sea levels, storm surge and king tides affecting the parkland and surrounding streets.	Retain and repair the existing rock edge.	Retain and replenish the existing seawalls, groynes (which extend out into the bay) and beaches.	Replenish the rock sea edge treatment as required.	<div>Investigate ways to improve the resilience of the area by:</div> <ul style="list-style-type: none"><li>• providing measures to resist over-topping sea water</li><li>• using sustainable materials to withstand the harsh coastal conditions</li><li>• exploring ways to increase the width of the parkland in specific locations.</li></ul>

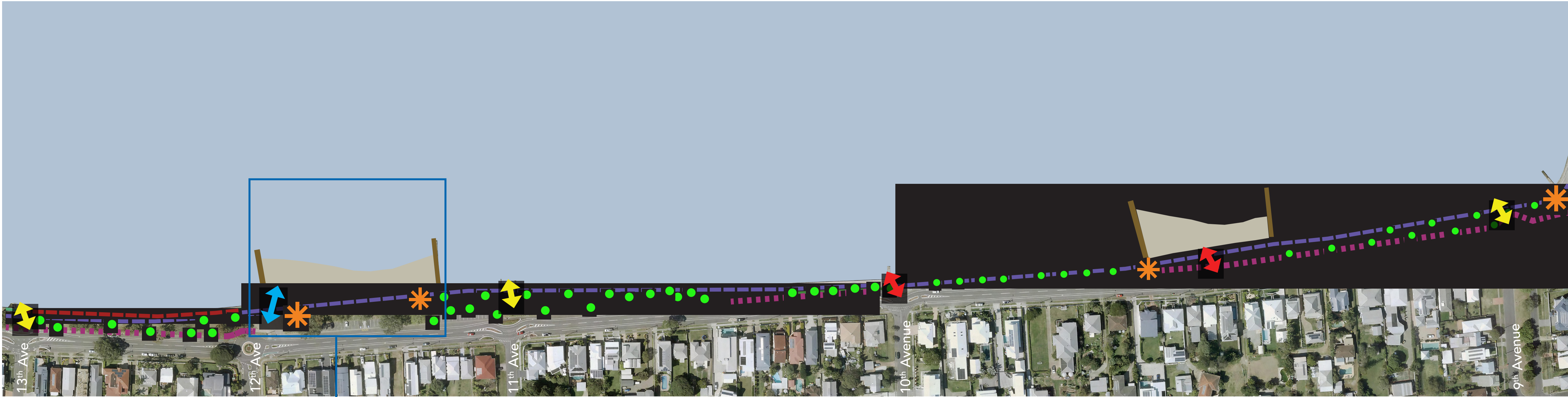


# Brighton Foreshore Parklands - final concept plan

9<sup>th</sup> Avenue to 13<sup>th</sup> Avenue



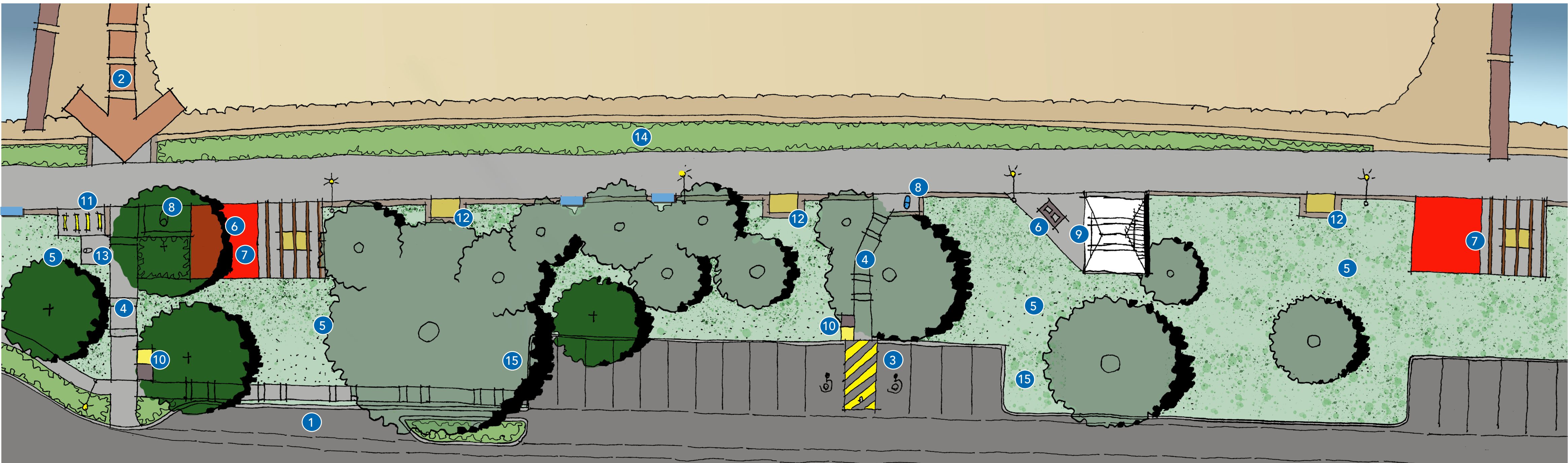
Dedicated to a better Brisbane



## Legend

- New kerbside pathway
- New seawall kerb
- New low seating wall
- Improve the safety of existing stair access to the tidal flats
- Build a new accessible ramp to the tidal flats/future beach area
- Upgrade existing boat ramp for launching of non-motorised watercraft
- Plant new shade trees
- Investigate the feasibility of new beaches
- Replace narrow grassed areas with native planting
- New picnic shelter

## 12<sup>th</sup> Avenue recreation area - proposed upgrade and new facilities

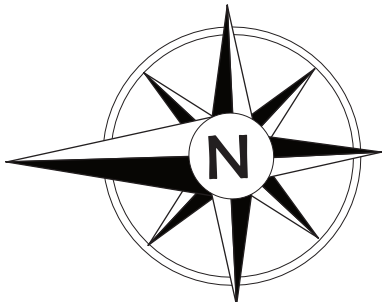


### Proposed upgrades

- New trees
- New seats
- Proposed future beach
- Drop off bay for non-motorised watercraft
- Upgraded ramp to launch non-motorised watercraft
- Accessible parking
- Accessible pathway
- Open lawn areas
- Barbecue
- Picnic shelter with pergola
- Drinking fountain
- Existing shelter
- Rubbish bins
- Bike racks
- Picnic setting
- Washdown area
- Coastal buffer planting

### Existing features

- Existing pathway
- Existing trees



0 5 10 20  
Scale in metres



Note: final location of all proposed improvement features shown is subject to further detailed design and investigations.



# Brighton Foreshore Parklands - final concept plan

13<sup>th</sup> Avenue to 19<sup>th</sup> Avenue

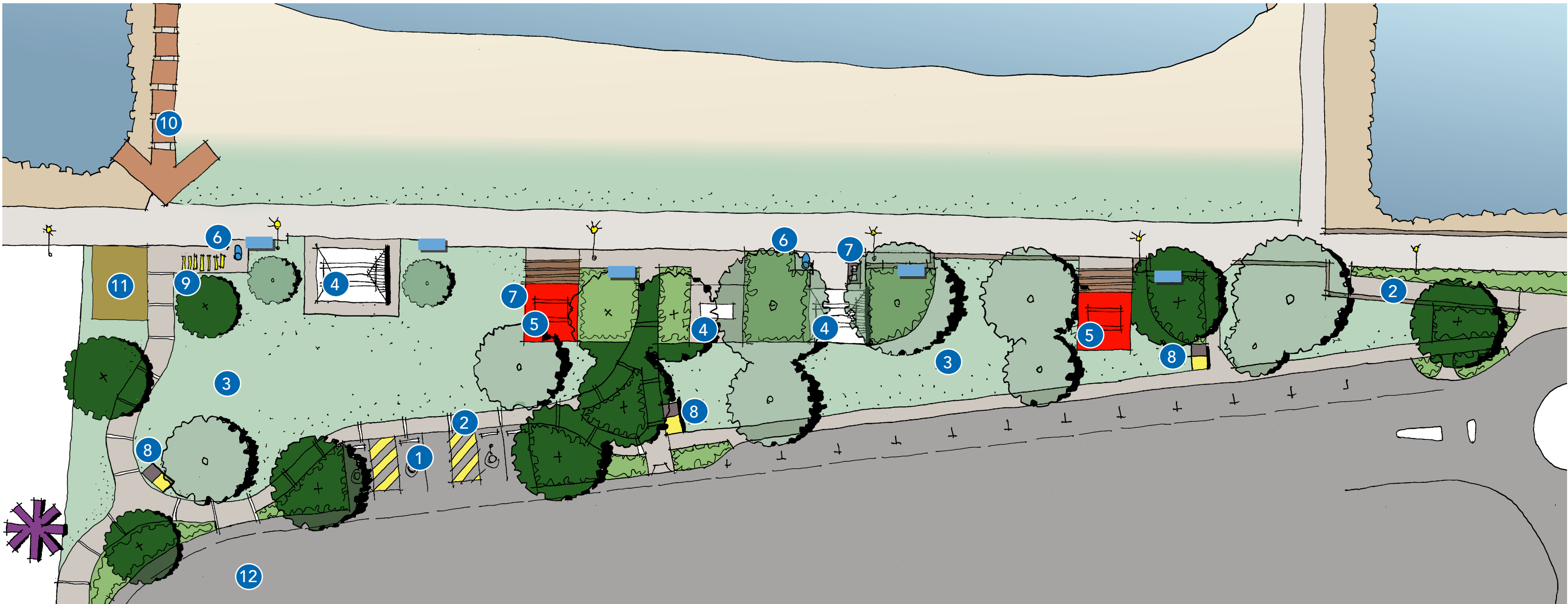


Dedicated to a better Brisbane



- New kerbside pathway
- New seawall kerb
- New low seating wall
- ➡ Improve the safety of existing stair access to the tidal flats
- ➡ Build a new accessible ramp to the existing/future beach area
- Plant new shade trees
- Investigate the feasibility of new beaches
- Replace narrow grassed areas with native planting
- Upgrade existing bridge
- ★ New picnic shelter

## 19<sup>th</sup> Avenue recreation area - proposed upgrade and new facilities

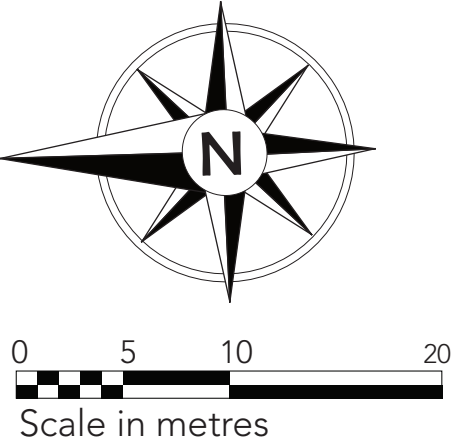


### Proposed upgrades

- New trees
- New seats
- ① Realignment of accessible parking and new parking spaces
- ② Accessible pathway
- ③ Open lawn areas
- ④ Existing picnic settings
- ⑤ New picnic shelter
- ⑥ Drinking fountain
- ⑦ Barbecue
- ⑧ Rubbish bins
- ⑨ Bike racks
- ⑩ Accessible path to existing beach
- ⑪ Amenities building (including an accessible adult change facility) and outdoor wash off area
- ⑫ Speed reduction platforms

### Existing features

- ★ Royal Australian Air Force Memorial
- Existing beach
- Existing pathway
- Existing trees



**Pathway widening:**  
widen the existing promenade pathway to match the rest of the foreshore. Further investigations required to determine most feasible way to achieve this.

Note: final location of all proposed improvement features shown is subject to further detailed design and investigations.