

# Ellen Grove Parks Precinct - final concept plan



Dedicated to a better Brisbane



### LEGEND

- 1. Open Space for informal community use, kickabout and potential volleyball court
  - 2. Recreational infrastructure including shelters, picnic tables, drinking fountains, bins, bike stands and barbecues
  - 3. Playground - refer to page 2 for play opportunities
  - 4. Tennis courts with lighting, one including line marking for pickleball use
  - 5. Main access from the car park to the playground and tennis courts, including seating, shade, lighting, stairs and ramps for access to all courts where required
  - 6. Clubhouse including a kiosk to service the park, accessible adult change facilities, change rooms, toilets, pro shop, office and meeting space
- Public amenities
- Accessible pathways
- Park footpaths, bollards and streetscape
- Seating
- Electrical powerline

### DESIGN INTENT

Brisbane City Council’s Ellen Grove Parks Precinct concept plan aims to create a sense of community, activity and play in a space that blends the natural environment with modern facilities.

The proposed features include open green spaces, recreational infrastructure, tennis and pickleball courts, playground and gathering spaces, while preserving biodiversity values.

Note: These plans and images are indicative only as a draft concept. Further design, planning and investigations are required to enable final design.



Additional tree planting, where feasible around the recreational and sport elements will enhance the habitat value and shade to the park.

Habitat protection and enhancement. Natural habitat features will be protected where possible.





# Ellen Grove Parks Precinct - final concept plan



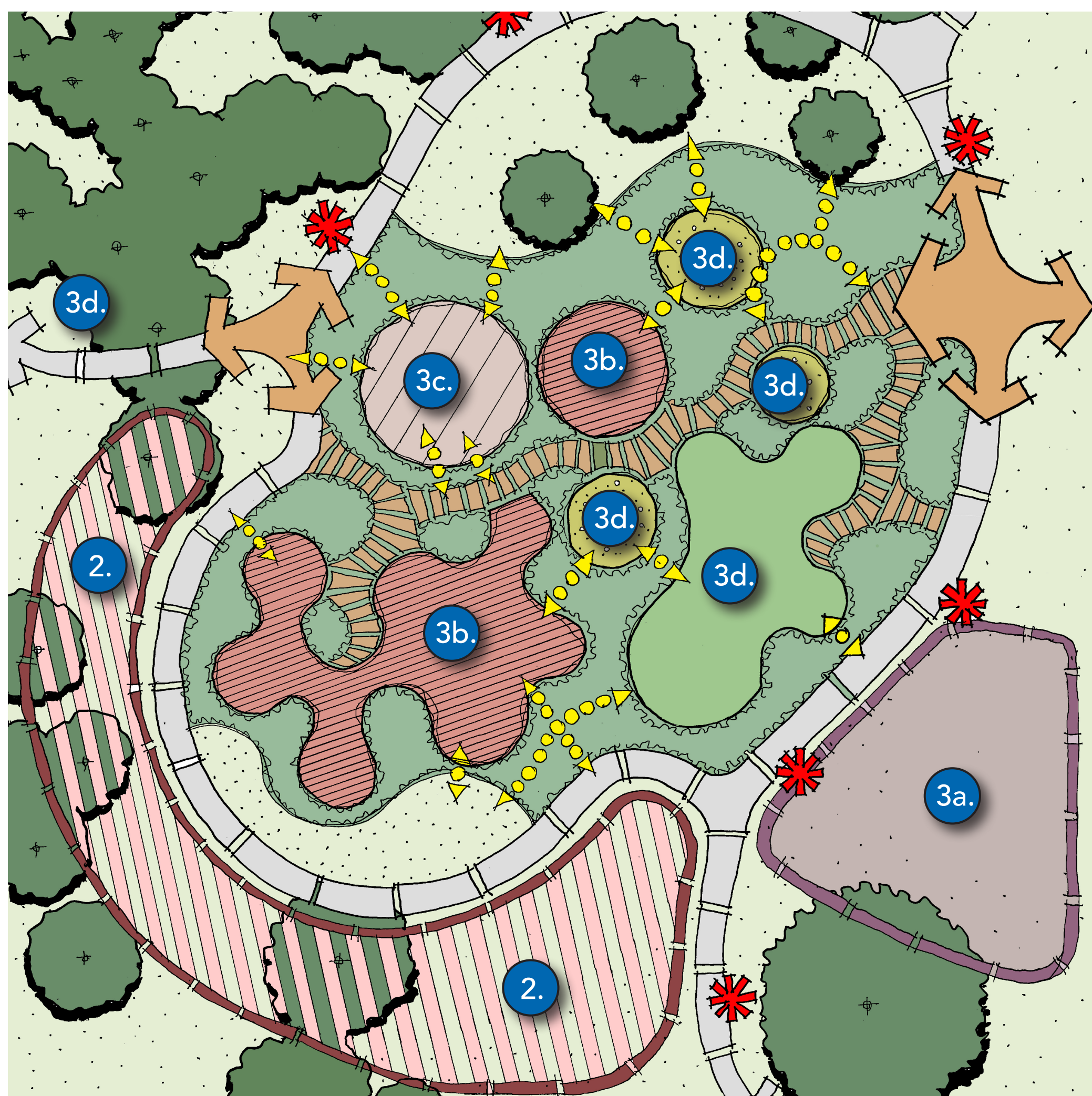
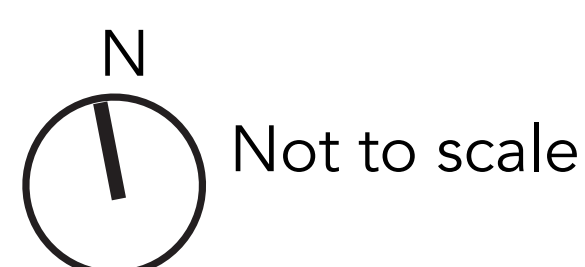
Dedicated to a better Brisbane

## DESIGN INTENT

The proposed playground and recreational infrastructure aim to create a destination park that integrates the surrounding natural environment.

A combination of traditional play equipment with artworks and landscape features, inspire and challenge children of all ages and abilities.

Note: These plans and images are indicative only as a draft concept. Further design, planning and investigations are required to enable final design.

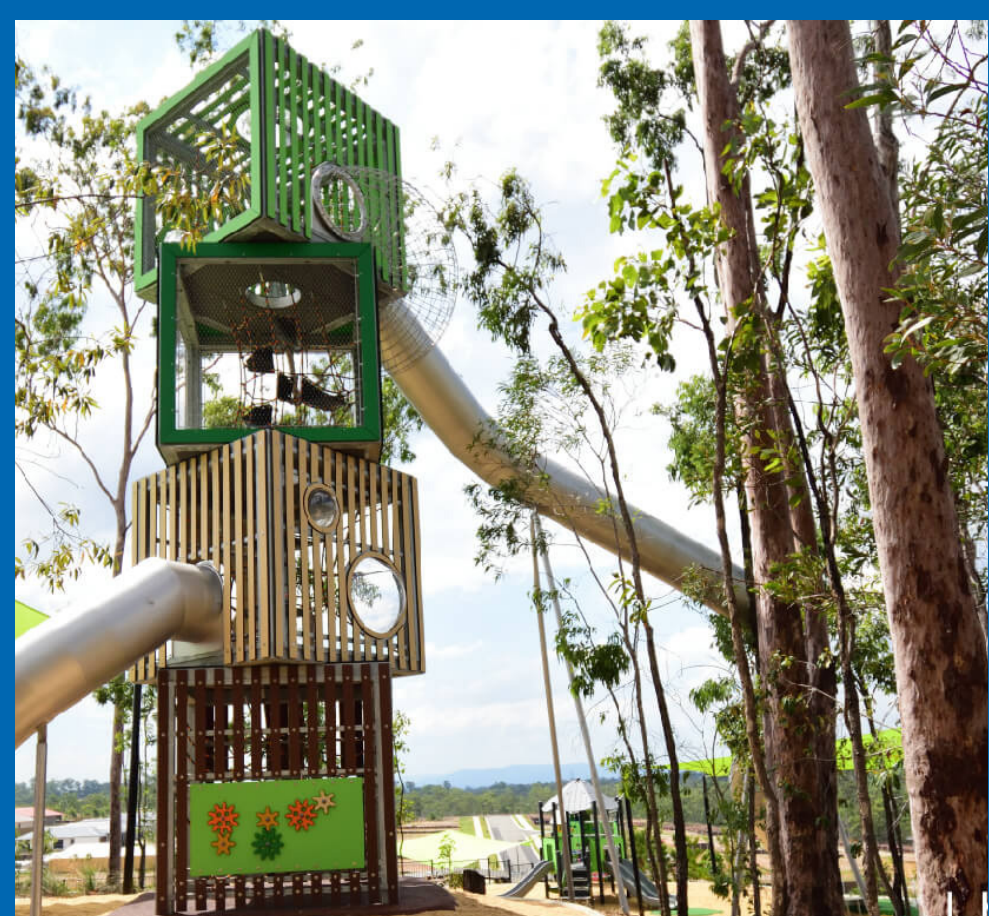
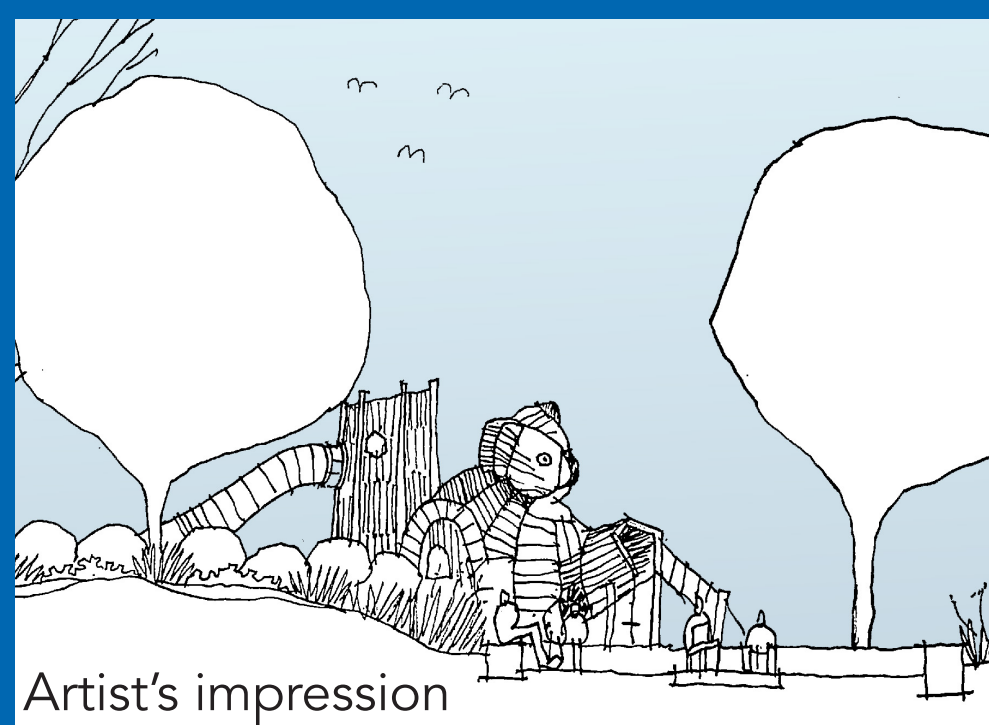


## LEGEND

- Accessible pathway link
- Playground entry
- An accessible playful path with lumps, bumps and integrated artwork to make the journey fun
- Stepping stones, logs and boulders provide playful shortcuts
- Native trees retained. Weeds, damaged and dead plants removed. Lawn established
- Lawn areas allow informal active play
- New trees, shrubs and groundcovers provide shade and a more natural environment
- 2. Picnic area
- 3a. Community gathering space
- 3b. Active play area
- 3c. Social play area
- 3d. Quiet play areas
- 3d. Nature and creative play areas

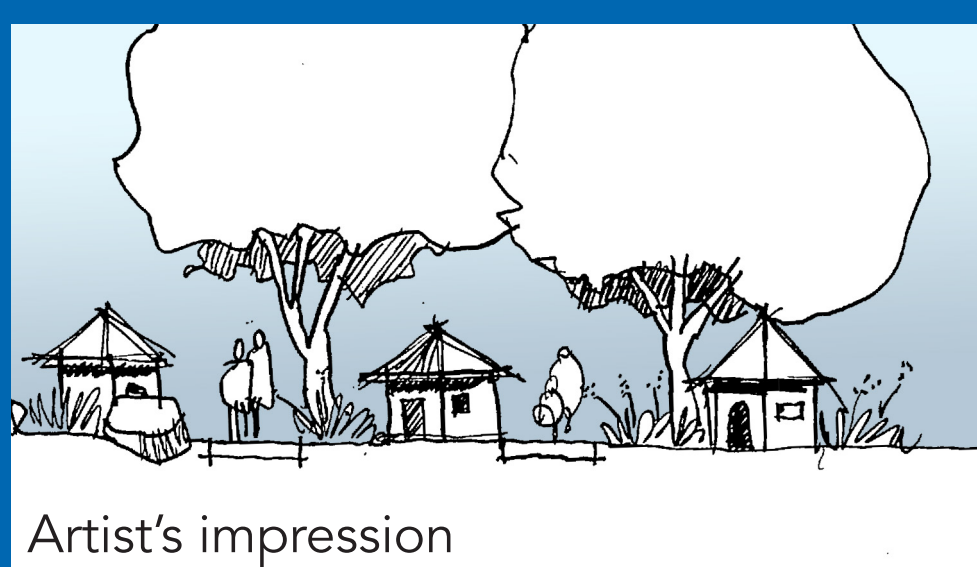
### ACTIVE PLAY

Equipment-based play allows for aerobic activity, coordination, balance and the development of gross/fine motor skills.



### SOCIAL PLAY

A selection of customised play equipment helps children develop interpersonal skills and a sense of identity.



### QUIET PLAY

Small areas separated from the busy areas allow children to get away from the noise. Sand and integrated artworks provide interest.



### NATURE/CREATIVE PLAY

Natural elements allow children to decide how they play, fostering creativity and honing self-reliance and risk assessment.

