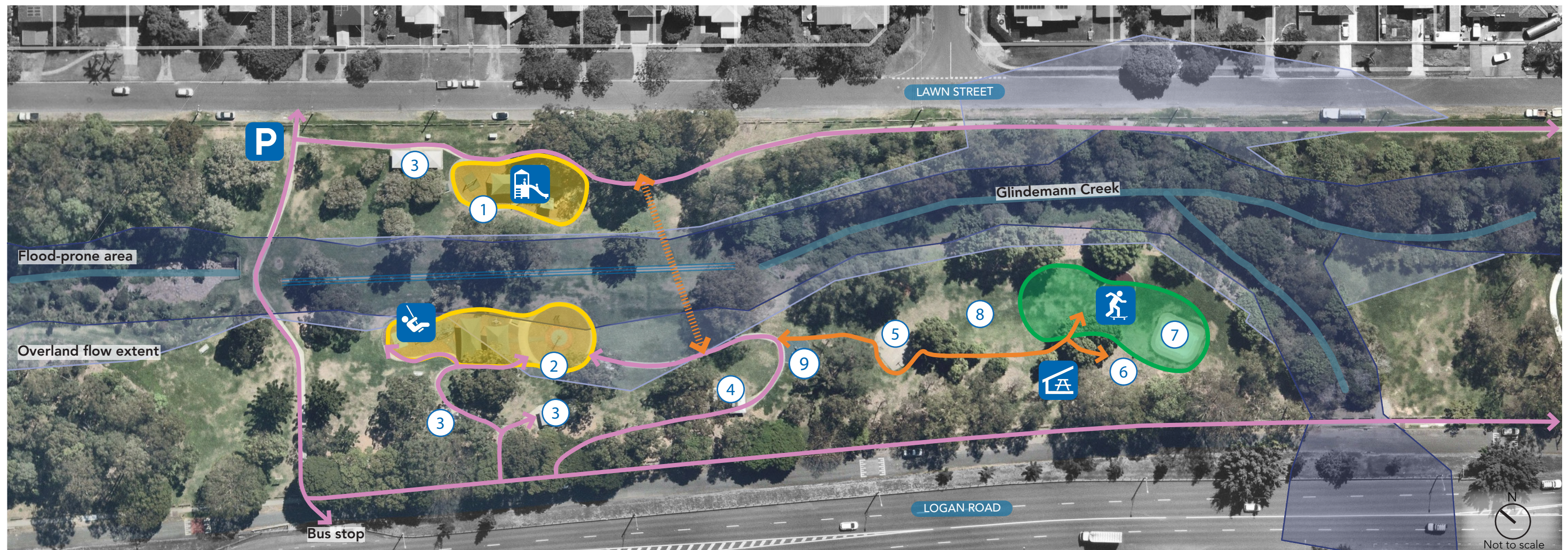


Glindemann Park improvements – Final concept plan



Dedicated to a better Brisbane



Proposed features



Multi-use track with skateable elements to replace existing skate bowl



New shade sails over playground 2 play area and swings



Shelter and additional seating



Future upgrades to playground 1



Two new accessible parking bays



New footpath connection



Elevated pedestrian pathway

Existing features

1

Playground 1 (Lawn Street)

2

Playground 2 (Logan Road)

3

Shelter and BBQ area

4

Public toilets

5

Basketball half court

6

Seat

7

Skatebowl

8

Kick-about space

9

Outdoor gym



Existing pathway network



Footprint of existing playground



Existing swale

Possible features for the multi-use track



Skateable features



Bike track elements



Bike and scooter skills

Notes

- Implementation to be staged according to available budget.
- Design subject to further site investigations, permits and development approvals.
- All images are indicative only and intended to show similar examples of potential features.

- Stage 2 of the Glindemann Park Waterway Health project, which forms part of the *Norman Creek 2012-2031 Master Plan* is not depicted on this plan.