

Hamilton Road and Spence Road intersection upgrade

Project introduction | March 2026



Dedicated to a better Brisbane

We're excited to share our design to upgrade the Hamilton Road and Spence Road intersection in Wavell Heights.

Project overview

We're installing traffic lights and changing the traffic lane layout to make the intersection safer and easier to use.

The new traffic lights will help everyone move through the intersection safely, including people walking, with 2 signalised pedestrian crossings. We're also creating 2 westbound lanes on Hamilton Road and extending the right-turn lane into Spence Road to make moving through the intersection smoother.

We're changing the Frankit Street at Hamilton Road access to be left-in, left-out only to make the area safer for everyone.

A message from the Lord Mayor

The Hamilton Road and Spence Road intersection is a busy spot, and we know it doesn't always feel safe for drivers.

That's why we're installing traffic lights to make your trip home safer.

People using local footpaths will benefit too, with new signalised pedestrian crossings across Hamilton Road and Spence Road.

We're working hard to finalise our construction program so we can get started on this upgrade soon.

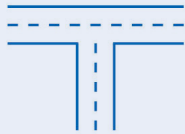
Adrian Schrinner,
LORD MAYOR OF BRISBANE



Project benefits



Safety



Intersection operation



Public transport reliability



Traffic flow



Stormwater drainage

Why are we installing traffic lights?


Between 2019 and 2024, there were 4 crashes at the intersection that resulted in 2 people being hospitalised and 2 needing medical treatment.

Heavy traffic, long wait times, and limited visibility can make it hard for drivers to judge safe gaps in traffic or enter and exit Spence Road safely. Installing new traffic lights to manage all turning movements and new signalised crossings will make it safer for everyone travelling through this intersection.



Contact us

Scan the QR code or search 'Hamilton Road and Spence Road' on our website to read more about this project or to register for project updates. If you have any questions, contact us by:

 **3178 5413** (between 8.30am and 4.30pm)
3403 8888 (24 hours, 7 days)

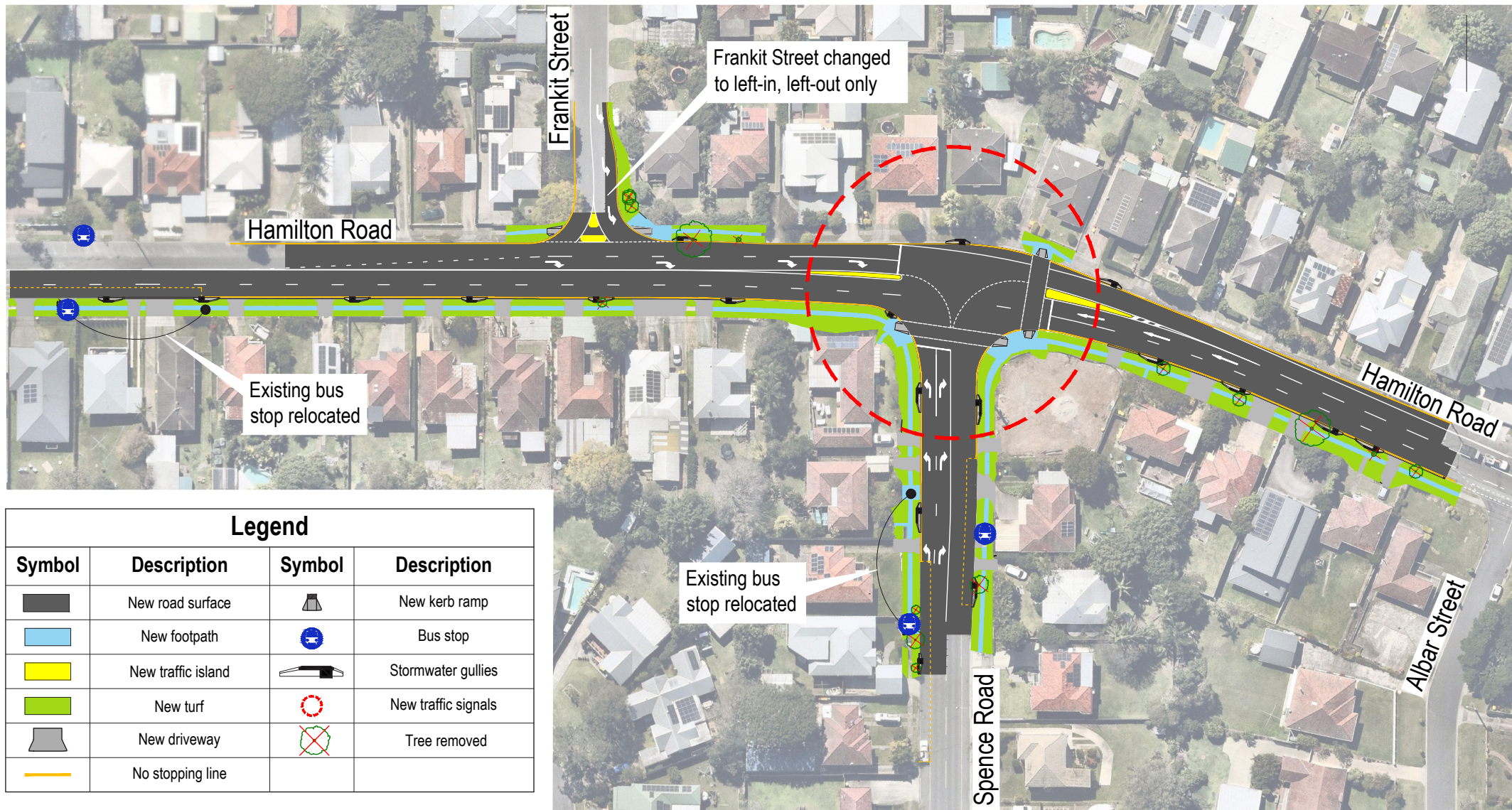


cityprojects@brisbane.qld.gov.au



When you contact Brisbane City Council, the personal information you provide will be used by Council for the purpose of responding to your enquiry and providing future information about this project. You can read more about Council's privacy policy at brisbane.qld.gov.au

Hamilton Road and Spence Road intersection upgrade Wavell Heights



Legend

Symbol	Description	Symbol	Description
	New road surface		New kerb ramp
	New footpath		Bus stop
	New traffic island		Stormwater gullies
	New turf		New traffic signals
	New driveway		Tree removed
	No stopping line		

What's next?

We're working to finalise our construction program and later this year, we'll share more information about when works will start. You can sign up on our website to receive project update emails.

Project plan
March 2026