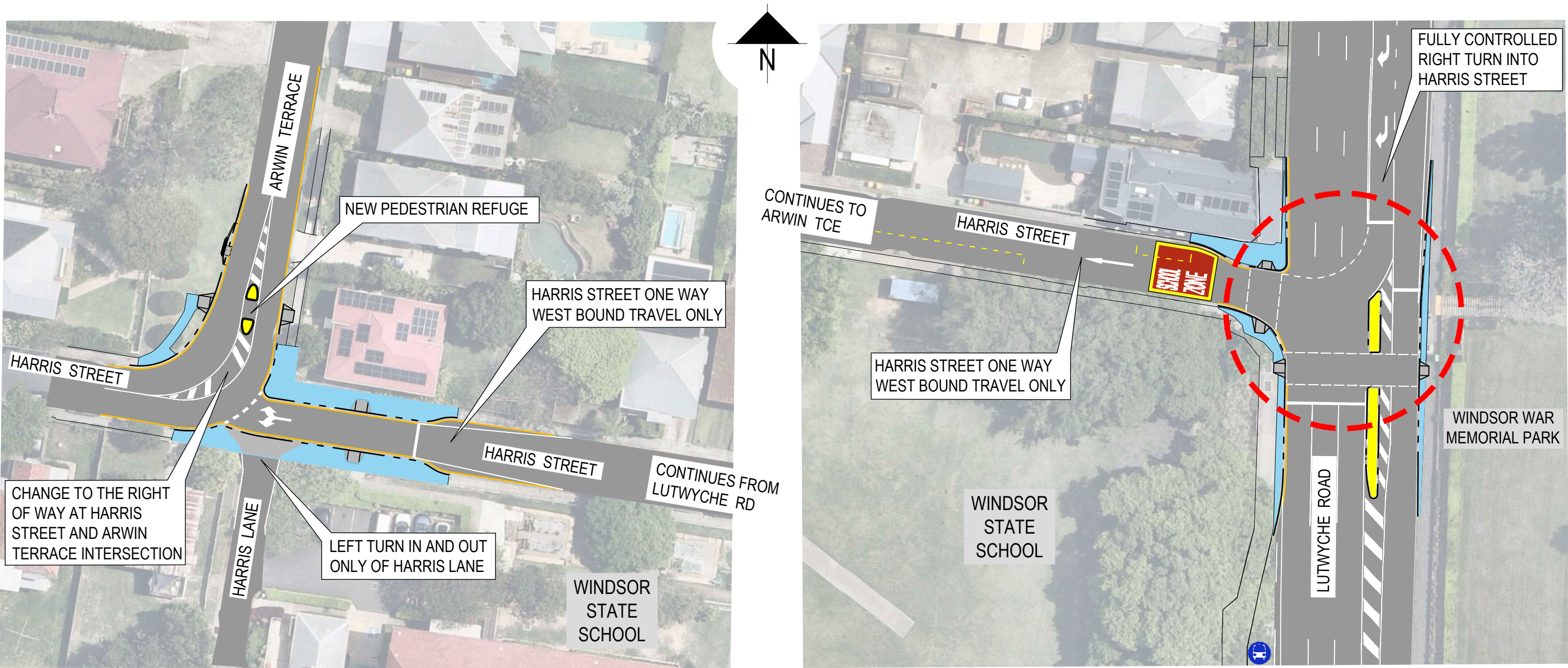


Lutwyche Road and Harris Street intersection upgrade

Windsor



Legend			
Symbol	Description	Symbol	Description
	ROAD SURFACE		KERB RAMP
	NEW TRAFFIC ISLAND		NO STOPPING LINE
	NEW FOOTPATH		NEW TRAFFIC LIGHTS
			EXISTING BUS STOP

SECURITY LABEL: FOR PUBLIC USE ONLY

CONSULTATION
CONCEPT DESIGN
LAYOUT DETAIL SUBJECT TO CHANGE



Dedicated to a better Brisbane

DESIGN A

July 2024
CONSULTATION PLAN