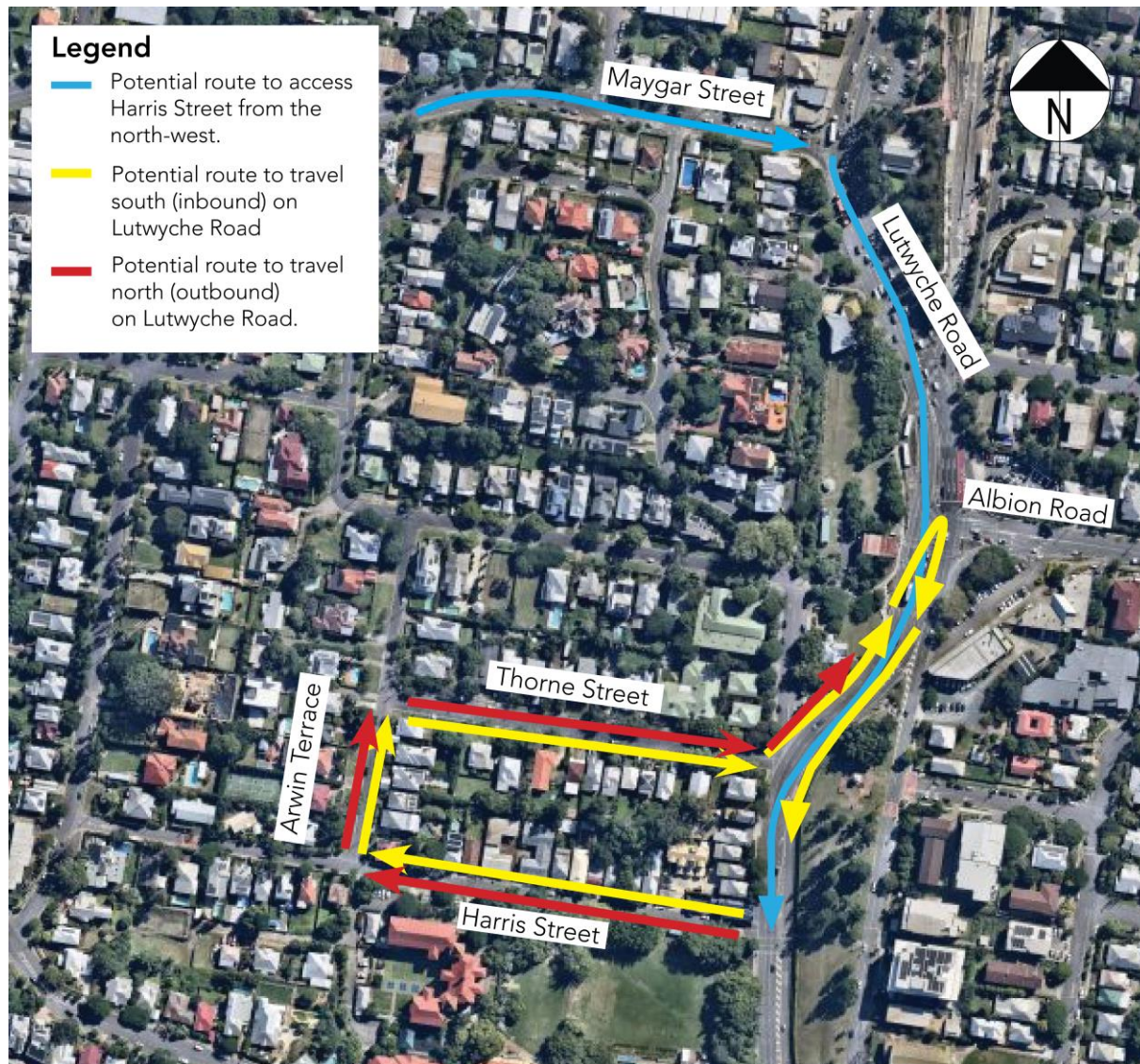


Lutwyche Road and Harris Street intersection upgrade

Potential new travel routes – Design A – Harris Street



Potential route to access Harris Street from the north-west (blue lines)

If travelling on Maygar Street (from the north-west), turn right onto Lutwyche Road and travel south (inbound), then turn right onto Harris Street.

Potential route to travel south (inbound) on Lutwyche Road (yellow lines)

Travel west on Harris Street, take the first right onto Arwin Terrace, then the first right onto Thorne Street. At the end of Thorne Street, turn left onto Lutwyche Road and travel north (outbound). Perform a U-turn at the signalised intersection of Lutwyche Road and Albion Road, then travel south (inbound) on Lutwyche Road.

Potential route to travel north (outbound) on Lutwyche Road (red lines)

Travel west on Harris Street, take the first right onto Arwin Terrace, then the first right onto Thorne Street. At the end of Thorne Street, turn left onto Lutwyche Road to travel north. (outbound).

