



Dedicated to a better Brisbane

Mansfield Safer School Precinct Community Consultation Report



About the Mansfield Safer School Precinct

Brisbane City Council is working with our community to create Safer School Precincts across our city.

Our new Safer School Precincts program will improve safety and ease congestion around schools by creating safer and more convenient ways for you to move around your local suburbs.

The Mansfield Safer School Precinct is the second precinct to start the impactful program which combines community engagement, infrastructure improvements and behaviour change to deliver safer and more convenient ways to move around the precinct.

The precinct supports 3 local schools and the surrounding residents and businesses in Brisbane's growing inner-south suburbs.

Bordered by busy roads like Broadwater Road, Ham Road and Wecker Road, the Mansfield Safer School Precinct will focus on treatments that improve how you move around the local streets where you live, work, learn and play.

Mansfield State School	Prep – Year 6 (boys and girls)	Approx. 1,210 students
Mansfield State High School	Years 7 – 12 (boys and girls)	Approx. 3,425 students
Brisbane Adventist College	Prep – Year 12 (boys and girls)	Approx. 573 students



About the community consultation

We wanted to empower you to work with us to help co-create the plan for the Mansfield Safer School Precinct.

To help us create the best possible precinct for the entire community, we invited you to have your say as part of a precinct-wide community consultation. The 5-week consultation was open to everyone who lives, works, learns or visits the Mansfield Safer School Precinct.

Your feedback helped us understand how you move and how you want to move through your precinct, as well as your ideas on how we can improve moving around the Mansfield Safer School Precinct.

We will use your feedback alongside our technical data to create the plan of treatments to ease congestion and improve safety around your schools and suburbs.

Digital engagement

Digital engagement was a key part of this consultation. You could have your say through an online survey and mapping tool. The online survey provided valuable insights about your experience in the Mansfield Safer School Precinct and the barriers and opportunities you see. The survey received 805 responses, providing us with 29,215 pieces of feedback.

The mapping activity allowed you to put pins on a map of the precinct to highlight potential improvements. 178 people added 425 pins on the map.

In-person engagement

During consultation, we engaged face-to-face with more than 200 people.

This gave us the opportunity to promote the consultation, speak directly with the people who live, work, learn and visit Mansfield Safer School Precinct and learn about your experiences.

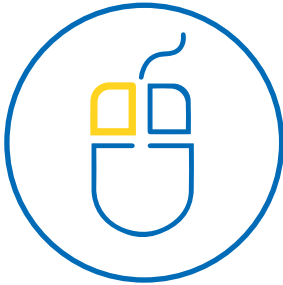
Engagement promotion

To help you share your experiences and learn more about what's possible in the Mansfield Safer School Precinct, we created a range of promotional and supportive collateral.

We activated the precinct with corflutes to raise awareness and direct people to the program website. We also promoted the consultation on social media and implemented digital marketing tactics across TV screens at Westfield Carindale and bus stop furniture in the precinct.

To support you to make informed decisions, we created and shared the Precinct Playbook with you to highlight what's possible with this program.

Consultation snapshot



805 responses
to the
online survey



429 pins
on the
mapping activity



29,215
pieces of
feedback received



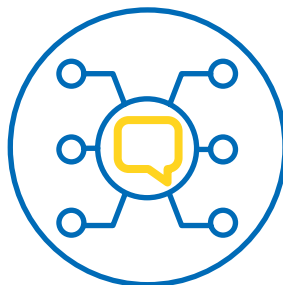
192 people
engaged
face to face



665
visits to the Safer School
Precinct webpage



550,303
people
reached



People saw Safer School
Precinct messaging
12,029,936
times

What you said

About the community

Understanding more about the community that live and move in the Mansfield Safer School Precinct helps inform the treatment plan. Based on your feedback, we know:

- more than one-third (36.6%) of the precinct community are a part of the precinct's school communities
- nearly one-third (30.8%) of the precinct community live in or close to the precinct
- 20.2% of the precinct community visit or travel through the precinct regularly.



Your experience moving around the precinct

When we asked you about your current experience moving around the Mansfield Safer School Precinct, more than half of you (59.8%) said your experience was poor or very poor.

Whereas only 17.5% rated your experience as good or very good.

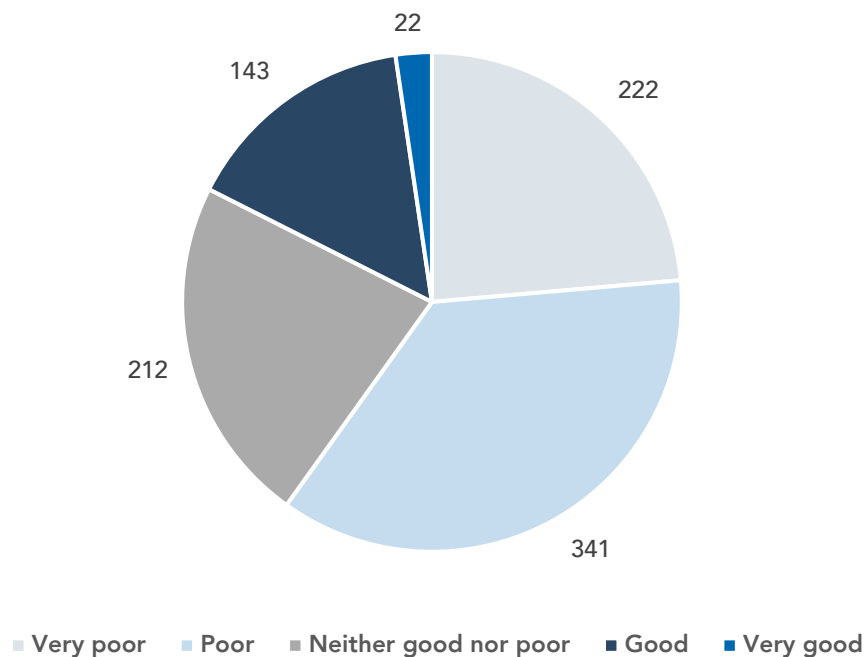
Traffic congestion is a major concern for you, with almost 90% rating traffic congestion in the precinct as poor or very poor.

Many of you are also concerned about road safety in the precinct, with over half of you (55.7%) rating it as poor or very poor.

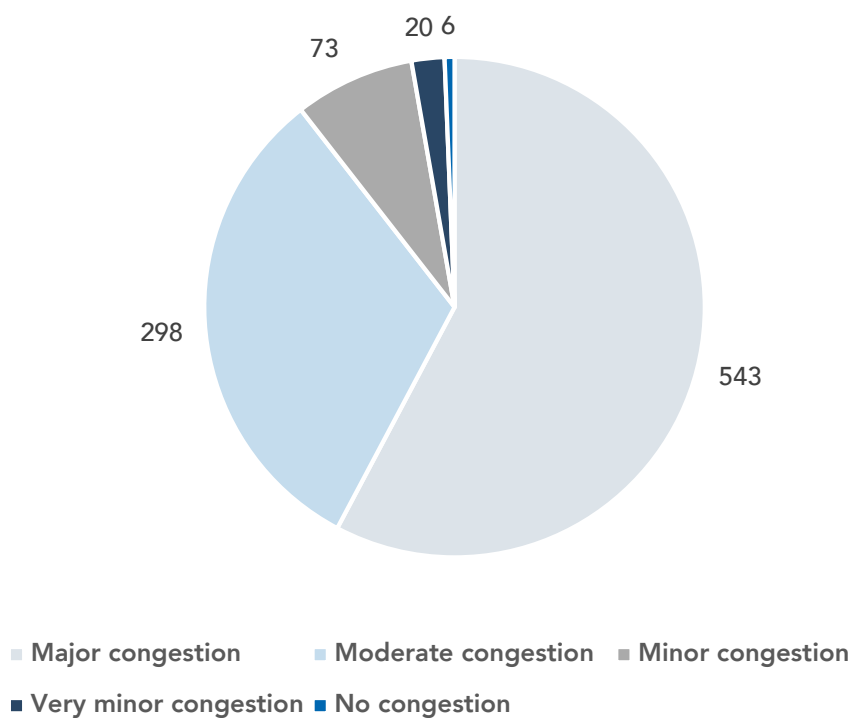
Top 3 perceived causes of congestion in the precinct

1. Queuing due to popular destinations like shopping centres or schools
2. Too many cars on the road
3. Unsafe driver behaviour e.g. speeding, illegal parking, blocking traffic flow

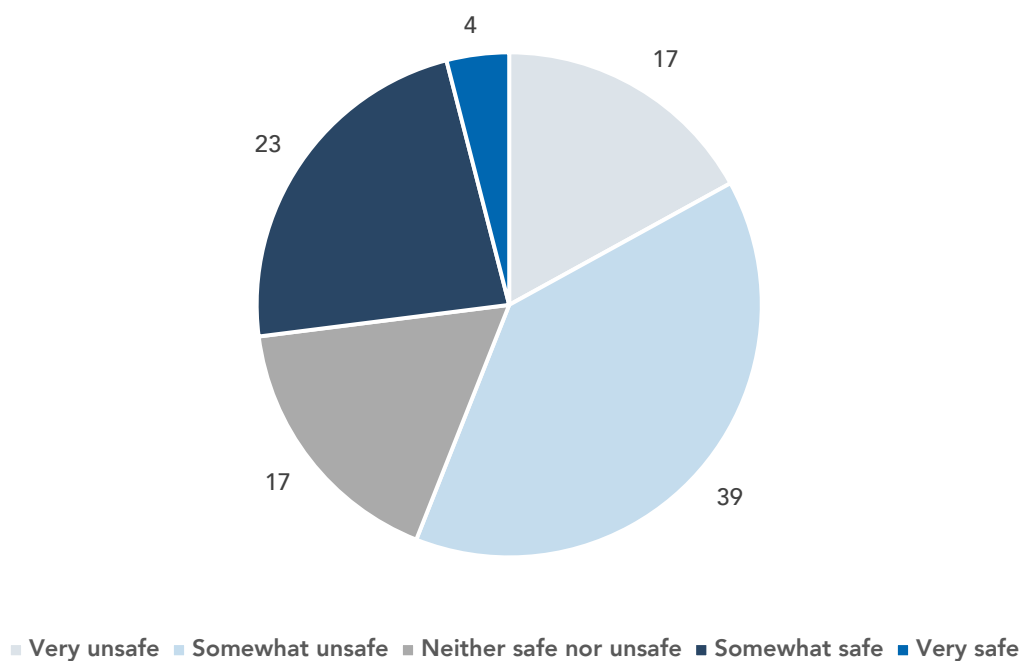
Rating of current transport experience



Rating of perceived traffic congestion in the precinct



Rating of perceived road safety in the precinct



What you said

How you move

Walking

When we talk about walking, we are referring to people moving on foot, people using mobility aids and people pushing prams.

This is important because our walking network should be accessible to people of all ages and abilities.

Top 3 things that help you enjoy walking

1. Walking is safe (e.g. well lit, clear lines of sight)
2. Walking paths and crossings are in convenient locations
3. Pathways are wide enough and in good condition

Top 3 things preventing you from walking more

1. Unsafe driver behaviour or vehicle speeds
2. Too hot and not enough shade
3. Poor footpath condition

Riding

Riding includes riding a bike, scooter or e-mobility devices like e-scooters.

These are grouped together as they use the same type of infrastructure and can travel at similar speeds.

Top 3 things that help you enjoy riding

1. Pathways are wide enough for pedestrians and riders
2. Good pathway connectivity
3. Pedestrians, riders and motorists are physically separated

Top 3 things preventing you from riding more

1. Limited or no separated bikeways
2. I (or my family) feel unsafe riding on the street
3. Unsafe driver behaviour e.g. speeding, illegal parking, blocking traffic



Buses

Many people catch the bus to get around. This includes people catching dedicated school bus services, known as district services, and public services managed by Council.

Top 3 things that help you enjoy catching the bus

1. Bus stops are conveniently located
2. Buses run to their scheduled time
3. Buses are an affordable way to travel

Top 3 barriers to catching the bus

1. Buses can be unpredictable
2. Wanting to go somewhere the bus does not service
3. Buses are too crowded

Driving

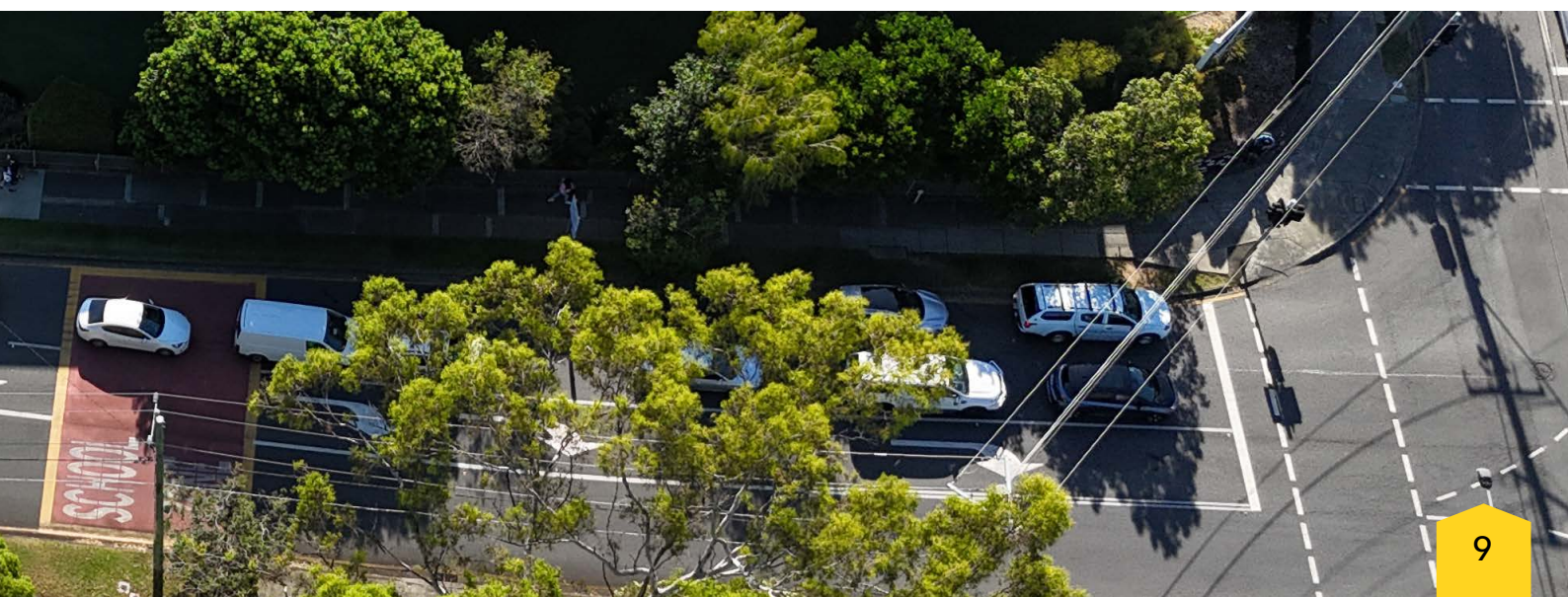
When we asked about your experience driving, we included your perspectives as a motorcycle rider and passenger or driver of a car.

Top 3 things that help you enjoy driving

1. Low levels of congestion
2. Convenient drop-off and pick-up zones near popular destinations like shops and schools
3. Parking is conveniently located and available

Top 3 things preventing you from driving more

1. High levels of congestion
2. Drop-off or pick-up areas are too congested to use
3. Too many cars on the road



What you said

Common themes/top ideas for improvement

As part of our review of what you've said, we've found some common themes in your feedback.

You said: *Queuing due to popular destinations like shopping centres and schools is one of the main causes of congestion in the area.*

Drivers queue through intersections, park illegally or block driveways and you think this causes many of the road safety and congestion issues.

You also said limited access points in and out of the precinct area and drivers taking short-cuts to avoid major roads contributes significantly to congestion issues.

What we can do

We can make it easier and safer to get you where you want to go by improving how our intersections operate.

Creating safe parking locations where students can safely walk the last few hundred meters to school on footpaths can also help reduce congestion and queuing through intersections.



You said: *Unsafe driver behaviour is preventing you or your family from walking in the area.*

There's a high number of drivers who are unaware or choose not to follow the Queensland Road Rules for driving and parking in the precinct. This is preventing you from walking more often in the precinct as you feel unsafe.

What we can do

There is a range of treatments we could implement to help improve driver behaviour.

This could be changing the street environment, educating drivers or working with the Queensland Police Service for additional enforcement of the Queensland Road Rules.

You said: *We want better footpaths.*

Having smooth, wide and connected footpaths will encourage you to walk more often – and you want to walk more often.

High quality footpaths make it easier for you to get around safely, including people using prams or mobility devices.

What we can do

A range of pathway upgrades can be installed to improve footpaths, including resurfacing so they are smooth and even. We can also build new pathways to create more convenient routes separated from vehicles traffic on the street.

We can widen older footpaths to make it more comfortable for you to walk in the area as well as adding more placemaking treatments such as wayfinding signage to make navigating around the precinct easier.

You said: *We want convenient drop-off and pick-up zones.*

Relocating or providing additional drop-off and pick-up zones was a key priority for you as you think the drop-off and pick-up areas do not currently meet the needs of the community.

Queuing for drop-off and pick-up zones, and parked cars blocking road or driveway access, all contributes to congestion on our roads and road safety in the precinct.

What we can do

We can improve parking options to make school drop-off and pick-up faster and easier, as well as reducing unsafe queuing.

Converting parking spaces to passenger zones or relocating current drop-off and pick-up zones can also help keep our roads safe and moving.

Installing yellow lines or additional road safety signage can also help ensure cars do not block the road when queuing at drop-off and pick-up zones.

You said: *Speeding is a concern.*

Many cars speed in your streets, particularly around school drop-off and pick-up times, which makes you feel unsafe.

You want to see reduced speed limits that suit your local streets and drivers adhering to the posted speed limits.

What we can do

There are a number of traffic calming treatments we can implement to encourage drivers to choose safer speeds and ensure drivers adhere to the posted speed limits.

Examples of possible treatments include slow points, medians or new and expanded school zones to slow down cars and bikes.

Raised intersection platforms and relocating or adding more dedicated pedestrian crossings can also reduce speeds in the precinct and make the roads safer for all users.

You said: *We want better on-street parking.*

On-street parking is limited and not formalised in your streets, leading to unsafe parking behaviours. Parked cars blocking road or driveway access and circling the block for a free parking space also contributes to congestion on your roads.

You want to see changed on-street parking conditions that meet the needs of the community, help the flow of traffic and improve safety for all road users.

What we can do

We can make simple changes to how and where cars park by formalising parking bays with clear line markings and adding parking spaces or passenger zones to maximise capacity while also improving accessibility and availability.

Next steps

Thank you for helping co-create the plan for the Mansfield Safer School Precinct.

Your feedback has helped shape the plan of treatments that will improve safety and ease congestion around your schools and suburbs.



Phase 1: Consult

Your feedback will help us create the plan to improve safety and reduce congestion around our schools and suburbs.

- **Precincts defined**
We identify precinct areas and begin technical investigations.
- **Community consultation**
We engage with residents, businesses and school communities to understand how you move around and what you want to see in the precinct.
- **Consultation report**
We share a summary of your feedback and the insights you've given us.

Phase 2: Deliver

- **Develop precinct plan**
We use your insights and our technical expertise to create a precinct plan.
- **Precinct plan activation**
We share the precinct plan with you to ensure it balances the needs of your precinct community.
- **We deliver new and improved infrastructure**

Phase 3: Empower

- **Use community insights**
We use your insights to identify ways to empower your community.
- **Empower behaviour change**
We provide behaviour change programs, tools and resources to help schools and the community take advantage of your new Safer School Precinct.

An aerial photograph of the Mansfield Safer School Precinct. The image shows a large, modern school building with a blue roof and walls, surrounded by lush green trees. In the foreground, there are residential houses with red-tiled roofs and solar panels. A large green field is visible behind the school building. The background features a dense forest and a hill under a clear blue sky.

The Mansfield Safer School Precinct is proudly supported by the Queensland Government's Cycle Network Local Government Grants program.





Dedicated to a better Brisbane

Brisbane City Council
GPO Box 1434
Brisbane Qld 4001




Every effort is made to ensure that
information is correct at time of printing

Printed on sustainable paper



IMAP-173819990-01-7240
©2025 Brisbane City Council

 brisbane.qld.gov.au
 3403 8888

 /BrisbaneCityCouncil
 @brisbanecityqld
 @brisbanecitycouncil