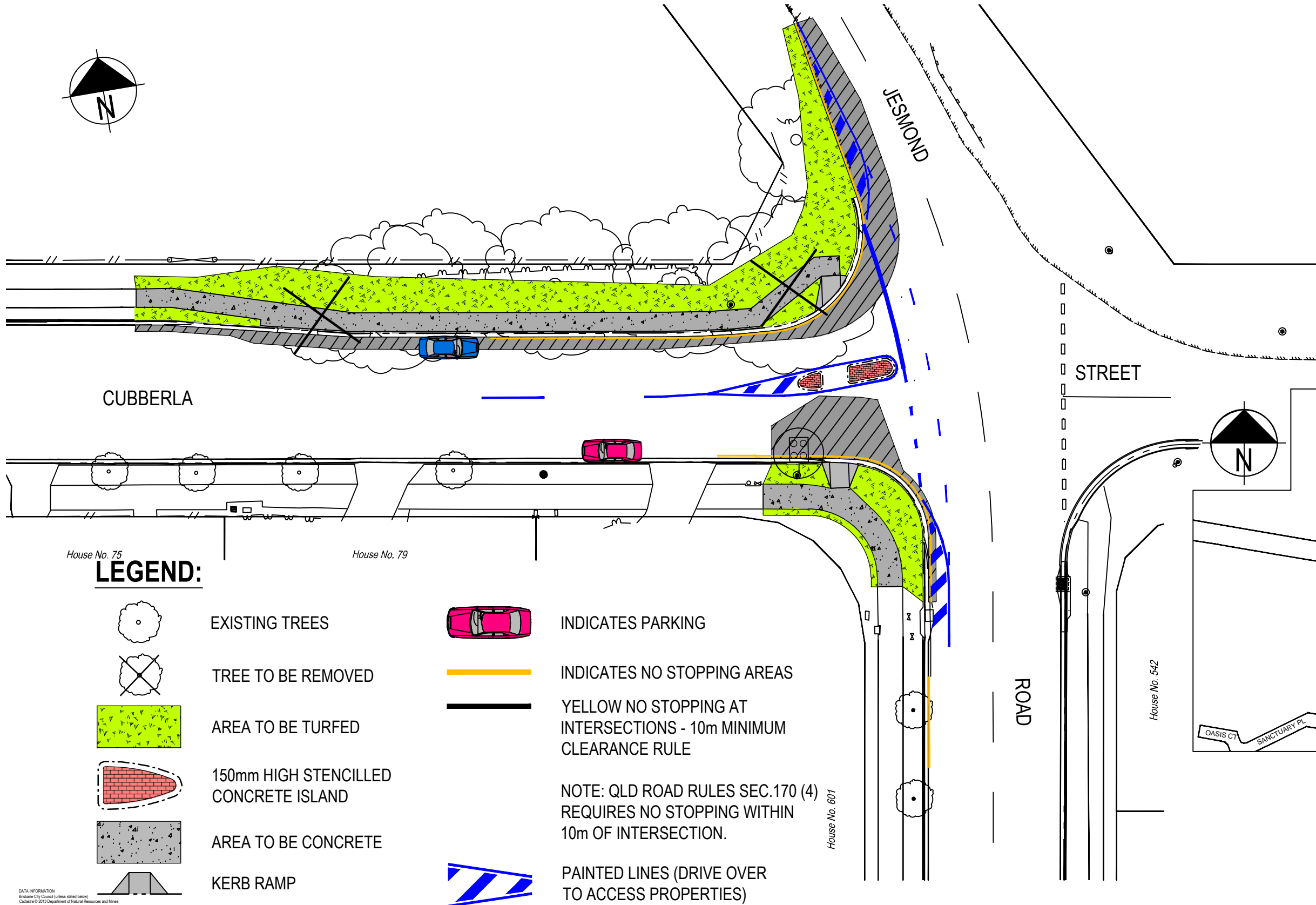


Pedestrian Safety Improvements

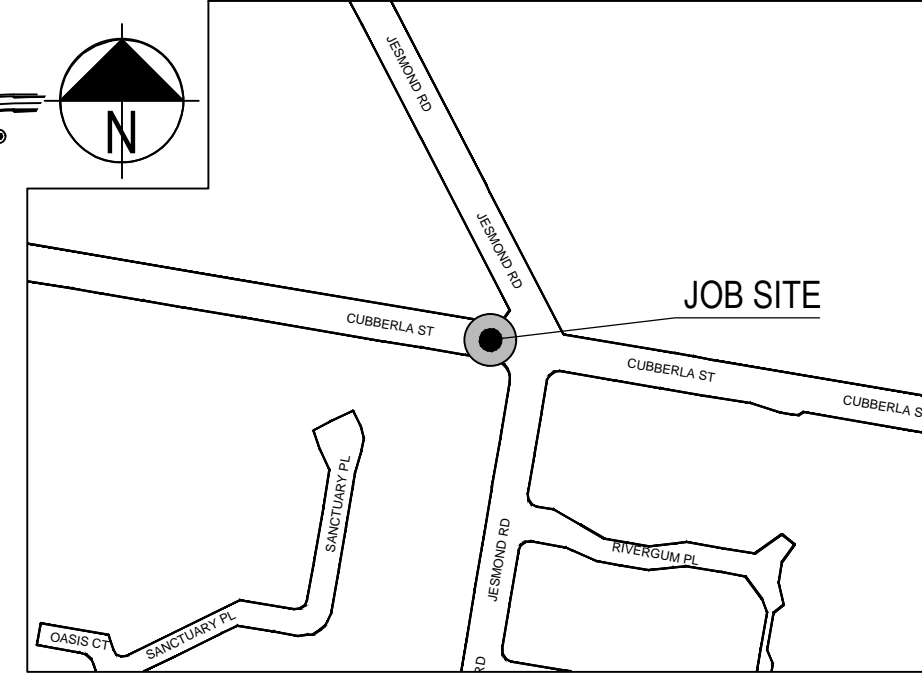
CUBBERLA STREET AT JESMOND ROAD - FIG TREE POCKET



LEGEND:

- EXISTING TREES
- TREE TO BE REMOVED
- AREA TO BE TURFED
- 150mm HIGH STENCILLED CONCRETE ISLAND
- AREA TO BE CONCRETE
- KERB RAMP
- INDICATES PARKING
- INDICATES NO STOPPING AREAS
- YELLOW NO STOPPING AT INTERSECTIONS - 10m MINIMUM CLEARANCE RULE
- PAINTED LINES (DRIVE OVER TO ACCESS PROPERTIES)

NOTE: QLD ROAD RULES SEC.170 (4) REQUIRES NO STOPPING WITHIN 10m OF INTERSECTION.



LOCATION



Dedicated to a better Brisbane

SECURITY LABEL: FOR PUBLIC USE ONLY