

February 2025

Cleveland Street and Zillah Street, Stones Corner Local Access Network Improvements

Project introduction

Project overview

We're pleased to announce plans to improve safety and accessibility on Cleveland Street and Zillah Street in Stones Corner as part of our Local Access Network Improvements program.

What does this project involve?

This project will include:

- installing a pedestrian refuge island on Cleveland Street near Jeavons Lane
- upgrading kerb ramps and installing concrete islands on either side of Cleveland Street at the new crossing point
- installing a new streetlight on Cleveland Street near the new crossing point
- installing a pedestrian refuge splitter island on Zillah Street near Cleveland Street
- removal of 1 small tree to allow for the construction of a new kerb ramp
- painting associated line marking, including yellow 'No Stopping' lines.

Once installed, on-street parking will not be permitted in spaces marked with yellow 'No Stopping' lines.

Please see the project plan on the back page for more details.

Why are we doing this?

Council has listened to feedback and concerns from the growing community about safety in this busy location.

Improvements as part of this project will:

- provide safer and more accessible pedestrian connections to local business, parks and residences
- delineate traffic and reduce corner cutting
- encourage slower and safer vehicle movements
- improve visibility for all road users.

Our Local Access Network Improvements program delivers important upgrades to ensure our suburbs are safe and accessible for all road users, particularly pedestrians.

Next steps

We are committed to keeping the community informed and will provide more information before construction is anticipated to start in mid-2025.

Contact us

To find out more about the project, you can contact us by:



3178 5413 (business hours)

3403 8888 (24 hours)



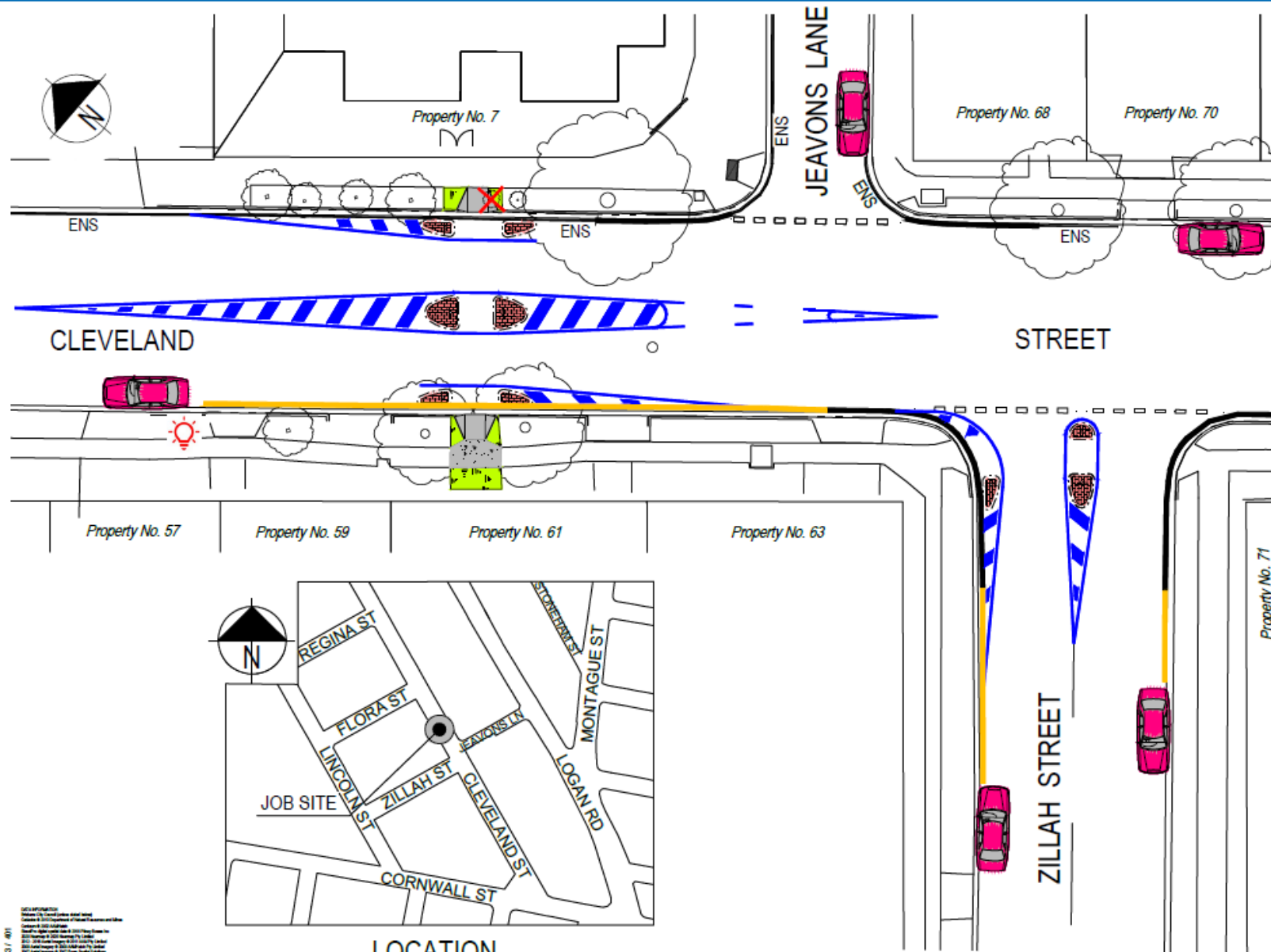
cityprojects@brisbane.qld.gov.au



Visit brisbane.qld.gov.au and search 'Road safety programs'

LOCAL ACCESS NETWORK IMPROVEMENTS

CLEVELAND STREET AT JEAUVONS LANE, STONES CORNER



LEGEND:

- EXISTING TREES
- EXISTING TREES TO BE REMOVED
- AREA TO BE TURFED
- 150mm HIGH STENCILLED CONCRETE ISLAND
- AREA TO BE CONCRETE
- KERB RAMP
- PAINTED LINES (DRIVE OVER TO ACCESS PROPERTIES)
- INDICATES PARKING
- INDICATES NO STOPPING AREAS
- EXISTING NO STOPPING
- YELLOW NO STOPPING AT INTERSECTIONS - 10m MINIMUM CLEARANCE RULE

NOTE: QLD ROAD RULES SEC.170 (4) REQUIRES NO STOPPING WITHIN 10m OF INTERSECTION.



Dedicated to a better Brisbane

SECURITY LABEL: FOR PUBLIC USE ONLY