

February 2025

Hilltop Avenue and Rode Road, Chermside Local Access Network Improvements

Project introduction

Project overview

We're pleased to announce plans to improve safety and accessibility on Hilltop Avenue and Rode Road in Chermside.

What does this project involve?

This project will include:

- installing a pedestrian refuge island on Rode Road east of Hilltop Avenue
- installing a pedestrian refuge splitter island on Hilltop Avenue at Rode Road
- upgrading kerb ramps and small sections of footpath on approach to the new pedestrian refuge islands
- installing a new streetlight on the western side of Hilltop Avenue
- painting associated line marking, including yellow 'No Stopping' lines.

On-street parking will not be permitted in spaces marked with yellow 'No Stopping' lines.

Please see the project plan on the back page for more details.

Why are we doing this?

This project is part of our Local Access Network Improvements program, which focuses on important upgrades to ensure our suburbs are safe and accessible for all road users, particularly pedestrians.

Improvements as part of this project will:


- provide safer and more accessible pedestrian connections to the Prince Charles Hospital, other health care facilities, bus stops and local businesses
- delineate traffic and reduce corner cutting to encourage slower and safer vehicle movements
- improve visibility for all road users.

Next steps


We are committed to keeping the community informed and will provide more information before construction is anticipated to start in mid-2025.

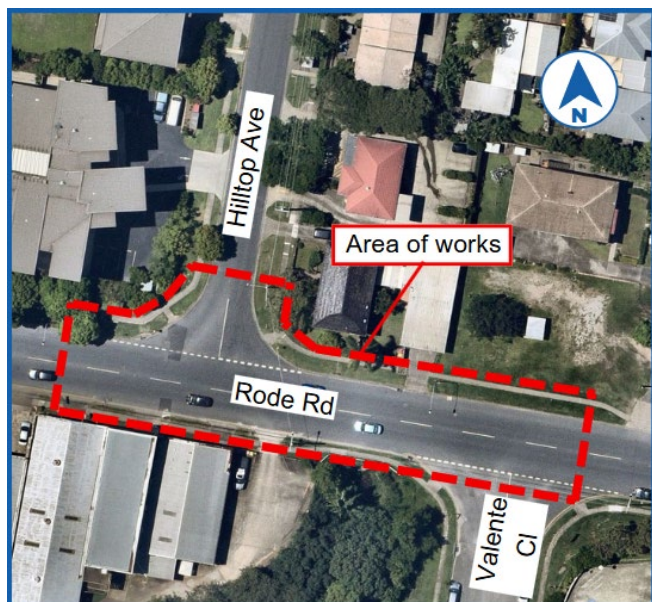
Contact us

To find out more about the project, you can contact us by:

 **3178 5413** (business hours)
3403 8888 (24 hours)

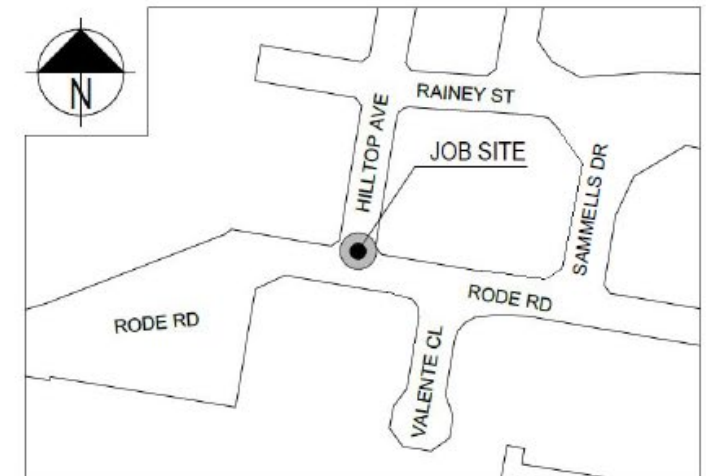
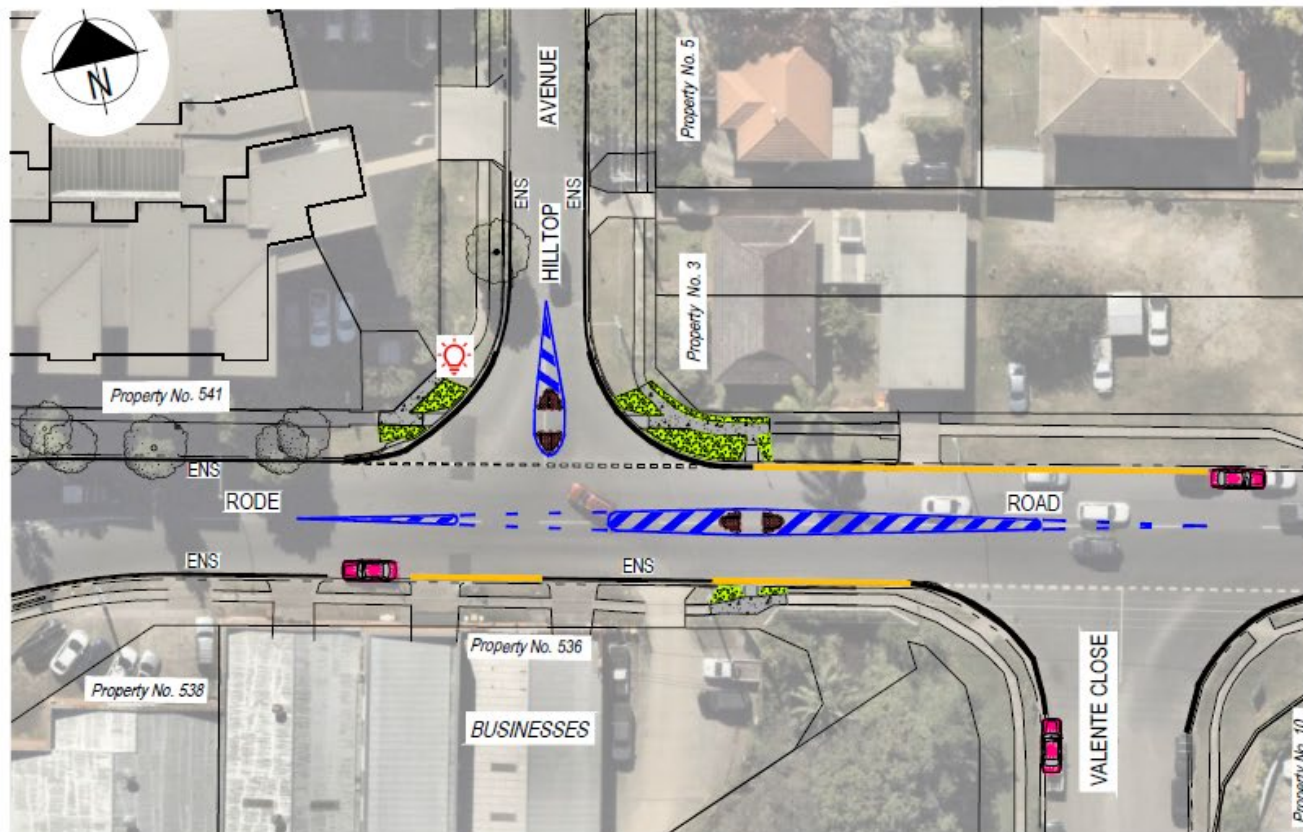
 **cityprojects@brisbane.qld.gov.au**

 Visit brisbane.qld.gov.au and search 'Road safety programs'



LOCAL ACCESS NETWORK IMPROVEMENTS

HILLTOP AVENUE AT RODE ROAD, CHERMSIDE



LOCATION

LEGEND:



EXISTING TREES



AREA TO BE TURFED



150mm HIGH STENCILLED
CONCRETE ISLAND



AREA TO BE CONCRETE



KERB RAMP



PAINTED LINES (DRIVE OVER
TO ACCESS PROPERTIES)



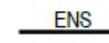
INDICATES PARKING



INDICATES NO STOPPING AREAS



NEW STREETLIGHT



EXISTING NO STOPPING



YELLOW NO STOPPING AT
INTERSECTIONS - 10m MINIMUM
CLEARANCE RULE

NOTE: QLD ROAD RULES SEC.170 (4)
REQUIRES NO STOPPING WITHIN
10m OF INTERSECTION.



Dedicated to a better Brisbane