

February 2025

## Hutton Road precinct, Aspley

### Local Area Traffic Management

#### Project update

We are pleased to advise planning for our Local Area Traffic Management (LATM) project within the Hutton Road precinct in Aspley is progressing.

Since our initial community consultation in 2020, we have explored a range of potential treatments on Hutton Road and surrounding streets. The community supported the installation of various traffic management devices on select streets within the precinct.

We have now reviewed recent traffic data alongside this feedback and will be installing the improvements listed below to discourage rat-running, reduce vehicle speeds and increase safety for all road users.

#### What does this project involve?

As part of this project, we will be installing:

- 4 speed platforms along Hutton Road
- a pedestrian refuge splitter island on Hutton Road at Ellerdale Street
- painted threshold treatments on Hutton Road at Zillmere Road, and on Navua Avenue and Wilmah Street at Robinson Road West
- associated line marking, including yellow 'No Stopping' lines.

On-street parking will not be permitted in spaces marked with yellow 'No Stopping' lines.

**Please see the project plan on the next page for more information.**



**Scan me**  
to find out more

#### Why are we doing this?

The improvements for the Hutton Road precinct will help to address community concerns about the safety of people walking, riding and driving by:

- discouraging non-local traffic
- reducing speeding and corner cutting
- providing safer and more accessible pedestrian crossing points
- increasing sightlines and visibility.

This project is part of our LATM program which delivers improvements across Brisbane's local road precincts and suburbs to ensure safer and slower roads.


#### Next steps

We are committed to keeping the community informed and will provide more information before construction starts in the coming months.


Following construction, Council will complete a review to confirm devices are operating as intended and take action to improve performance within the precinct if needed.

#### Contact us

To find out more about these works or the project, you can contact us by:

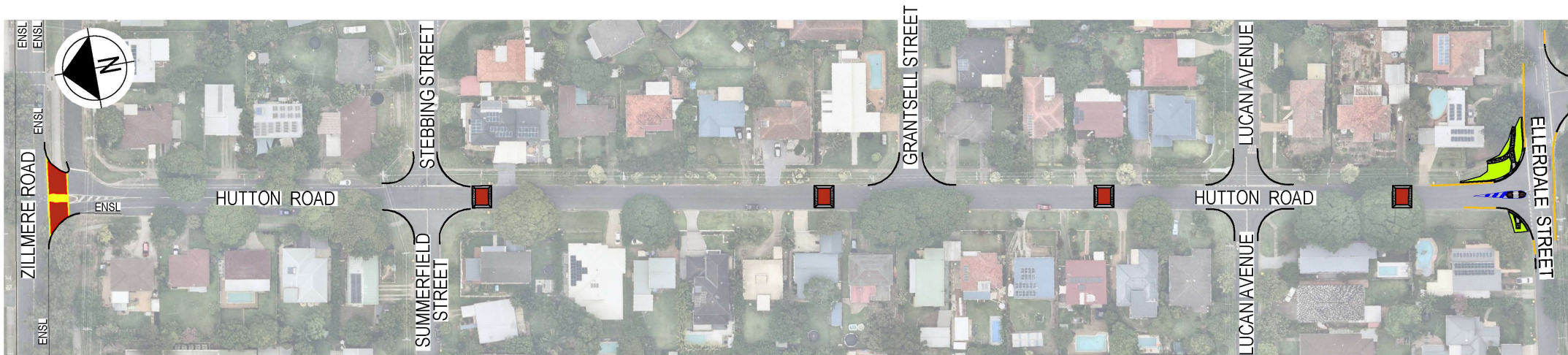
 **3178 5413** (business hours)  
**3403 8888** (24 hours)

 **cityprojects@brisbane.qld.gov.au**

 Visit [brisbane.qld.gov.au](https://brisbane.qld.gov.au) and search 'Hutton Road precinct, Aspley Local Area Traffic Management'

# LOCAL AREA TRAFFIC MANAGEMENT

## HUTTON ROAD PRECINCT, ASPLEY



### LEGEND:



AREA TO BE TURFED



NEW COLOURED  
PAVEMENT TREATMENT -  
NO PATTERN



150mm HIGH STENCILLED  
CONCRETE ISLAND



AREA TO BE CONCRETE



KERB RAMP  
PAINTED LINES (DRIVE  
OVER TO ACCESS  
PROPERTIES)



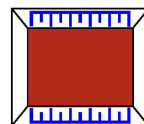
PROPOSED YELLOW NO  
STOPPING - (BASED ON SIGHT  
DISTANCE REQUIREMENTS)



EXISTING YELLOW NO STOPPING  
LINE



YELLOW NO STOPPING AT  
INTERSECTIONS - 10m MINIMUM  
CLEARANCE RULE



NOTE: QLD ROAD RULES SEC.170  
(4) REQUIRES NO STOPPING  
WITHIN 10m OF INTERSECTION.

SPEED PLATFORM

