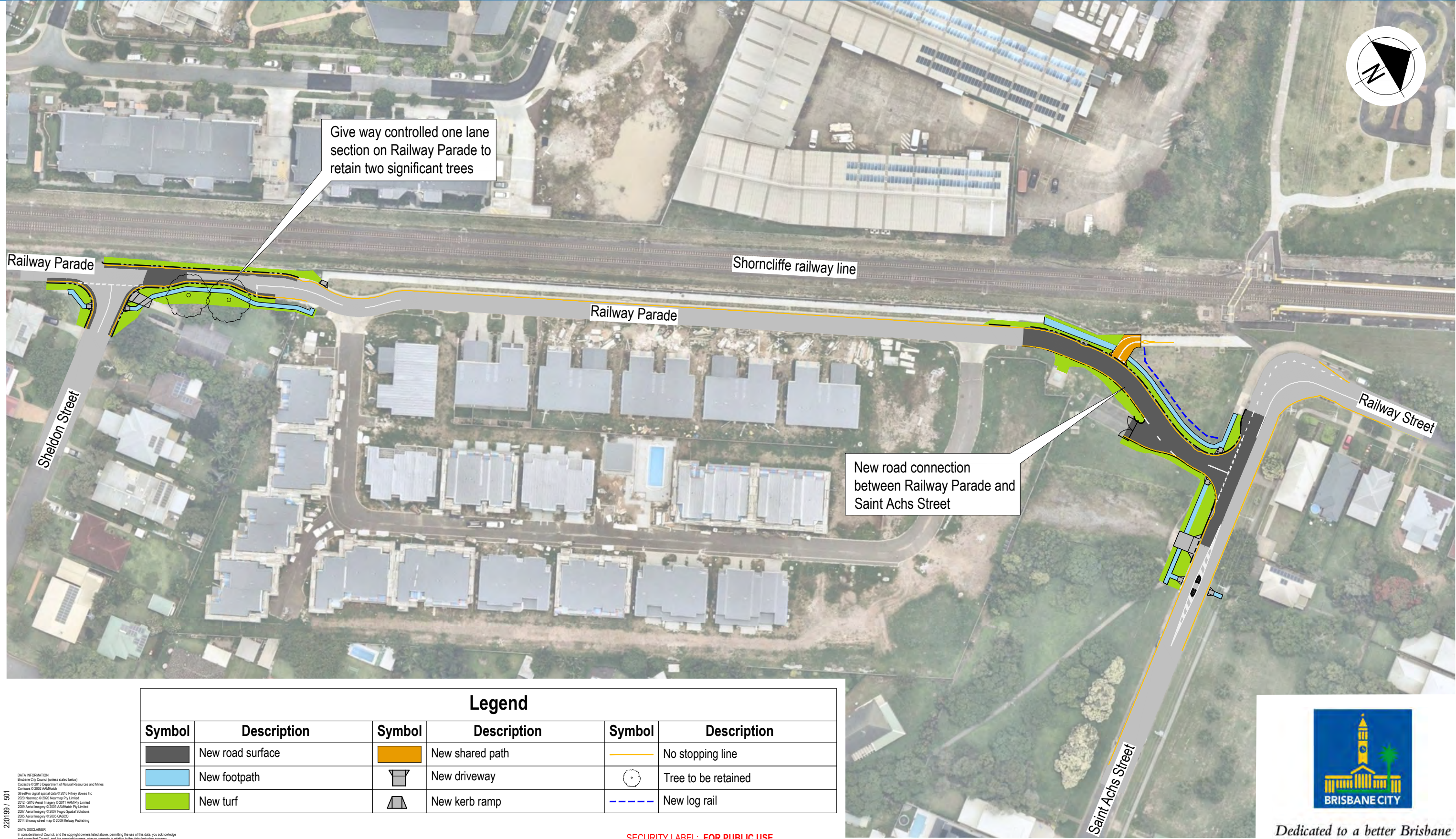


Railway Parade connection project

Nudgee



Give way controlled one lane section on Railway Parade to retain two significant trees

New road connection between Railway Parade and Saint Achs Street

Legend					
Symbol	Description	Symbol	Description	Symbol	Description
	New road surface		New shared path		No stopping line
	New footpath		New driveway		Tree to be retained
	New turf		New kerb ramp		New log rail

220199 / 501
 DATA INFORMATION
 Brisbane City Council (unless stated below)
 Cadastre © 2013 Department of Natural Resources and Mines
 Contours © 2002 AMHatch
 Streets/No digital spatial data © 2016 Pitney Bowes Inc
 2020 Neemap © 2020 Neemap Pty Limited
 2012 - 2016 Aerial Imagery © 2016 AAM Pty Limited
 2009 Aerial Imagery © 2009 AAM Pty Limited
 2007 Aerial Imagery © 2007 Fugro Spatial Solutions
 2005 Aerial Imagery © 2005 CAECO
 2014 Brisbane street map © 2009 Melway Publishing

DATA DISCLAIMER
 In consideration of Council, and the copyright owners listed above, permitting the use of this data, you acknowledge and agree that Council, and the copyright owners, give no warranty in relation to the data (including accuracy, reliability, completeness, currency or suitability) and accept no liability (including without limitation, liability in negligence) for any loss, damage or costs (including consequential damage), resulting to any use of this data.

SECURITY LABEL: FOR PUBLIC USE



Dedicated to a better Brisbane

For more information about this project, please call the project team on 3178 5413 or email cityprojects@brisbane.qld.gov.au.

Project plan
 March 2025