

March 2025

Curragundi Road, Jindalee

Suburban Corridor Modernisation

Project update

In June 2024, we completed works to improve safety and accessibility along Curragundi Road as part of our Suburban Corridor Modernisation project.

These works included installing new pedestrian refuge islands, relocating a pedestrian refuge and bus stop, constructing kerb buildouts and ramps, painting line marking, and landscaping.

Council will now be improving safety for all road users at the pedestrian crossing on Curragundi Road near Arrabri Avenue.

When will this work take place?

Start	Early April 2025
Finish	Late April 2025, weather and site conditions permitting
Time and day	7am to 4pm, Monday to Saturday. Occasional night works will be required between 7pm to 5am.

We will make every effort to complete the works during the school holiday period to minimise impacts to the community and road network.

What will these works involve?

Works to improve safety on Curragundi Road and Arrabri Avenue will include:

- removing the zebra crossing and constructing a fenced centre refuge island to create a safer 2-stage pedestrian crossing
- installing traffic islands on the northern side of the crossing and extending the kerb on the southern side to improve pedestrian safety
- adding traffic islands on the western side of Arrabri Avenue to narrow the lane width, encourage slower and safer vehicle movements, and improve pedestrian safety
- completing minor footpath and turfing works to improve accessibility
- applying new line markings, including yellow 'No Stopping' lines.

Some on-street parking will be removed to improve visibility, allowing pedestrians, cyclists, and drivers to see each other more clearly at the crossing and to ensure the road is wide enough for traffic to safely pass.

Why are we doing this?

The zebra crossing at this location was installed in the early 1970s, and no longer meets current safety standards. While zebra crossings are suitable in some locations, visibility at this site is obstructed by a crest, resulting in several near misses. Given the limited sight lines, the zebra crossing is no longer considered safe.

Following recent pedestrian upgrades along Curragundi Road, it is essential that these changes align with current Australian road design standards.

As a result, a 2-stage pedestrian refuge crossing has been designed to improve safety and visibility, particularly for school students. This upgraded crossing allows pedestrians to cross one lane at a time and narrows the lanes to 3 metres, which shortens the crossing distance and encourages slower, safer vehicle movements. Additional signage will further guide both pedestrians and drivers.

The State Government's Department of Transport and Main Roads has confirmed that 2 crossing supervisors will be provided to assist students to cross the road during the morning and afternoon peak school drop-off and pick-up times.


What does this mean for me?


If you live in or are travelling through the area, during construction you may experience:


- increased noise, dust, and vibration
- minor delays, reduced speed limits, temporary lane closures and footpath detours
- traffic controllers and signage on site.

Contact us

To find out more, you can contact us by:

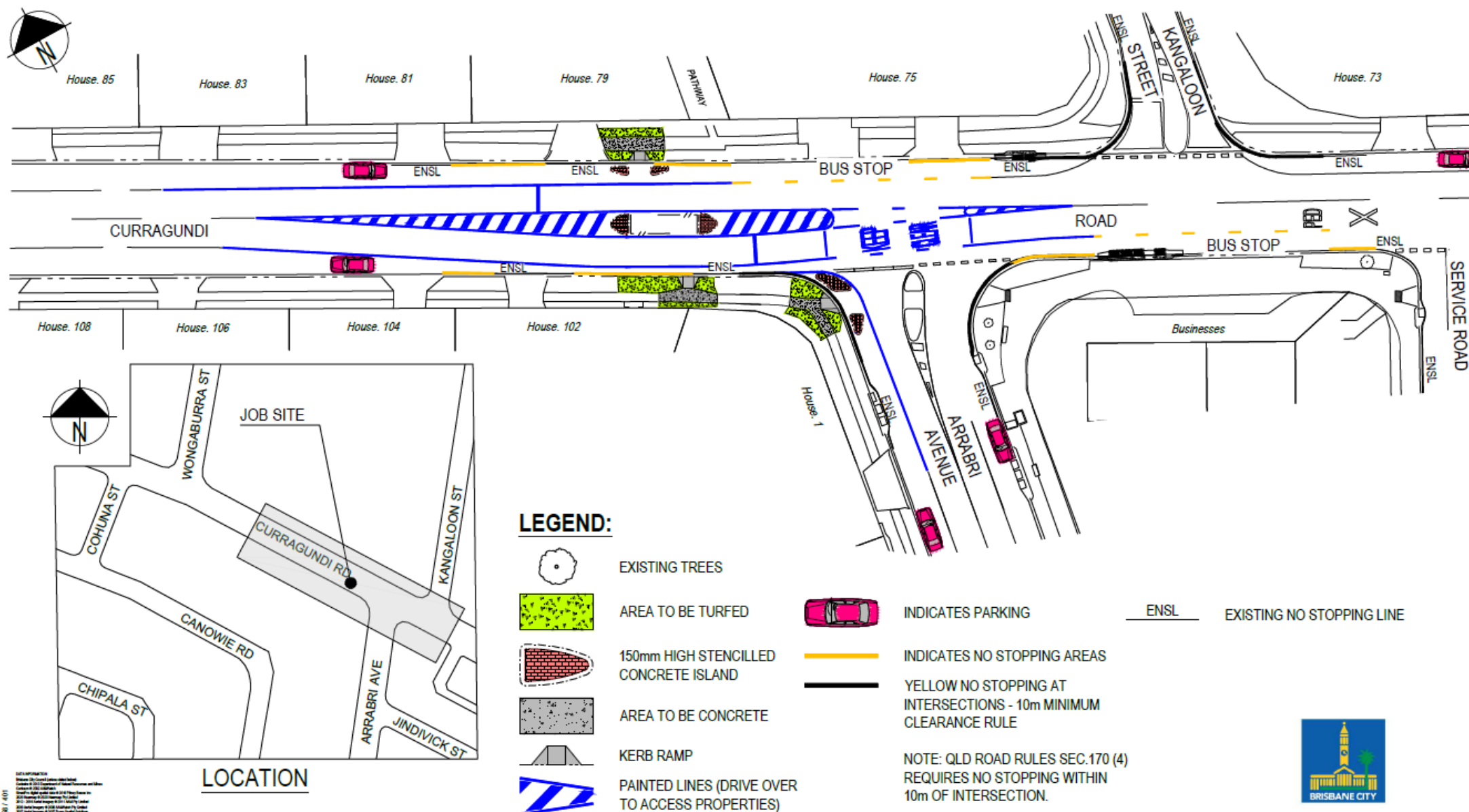
 **3178 5413** (business hours)
3403 8888 (24 hours)

 **cityprojects@brisbane.qld.gov.au**

 Visit brisbane.qld.gov.au and search 'Curragundi Road Suburban Corridor Modernisation'

SUBURBAN CORRIDOR MODERNISATION

CURRAGUNDI ROAD, JINDALEE



22/05/2017 / 401

SECURITY LABEL: FOR PUBLIC USE ONLY



Dedicated to a better Brisbane