

James Warner and C.T. White parks remediation

Start of construction – April 2026

What works are coming up?

We're completing remediation works at James Warner Park and C.T. White Park at Kangaroo Point to keep these popular riverside parks enjoyable for everyone.

Work at James Warner Park will start in late April. Once that's underway, we'll move on to C.T. White Park. We'll share another update before work begins there so you know what's happening and what to expect.

When will this work take place?

Start	Late April 2026
Finish	Late 2026
Time and day	7am to 5pm, Monday to Saturday

What does this work include?

To improve these parks, we're taking out old fill material under the soil and replacing it, planting new trees, laying new turf and landscaping the area. Park features you enjoy will all be reinstated after these works are complete.

Vegetation

To prepare for these works, some trees will be removed. We'll protect significant trees wherever possible and plant new trees and enhance landscaping.

A new deck will be installed around some trees in the dog park so we can keep the trees for shade while still giving people and their dogs plenty of room to enjoy the space.

What does this mean for me?

If you live in or travel through the area, you may notice:

- temporary closures of parts of the parks while works are happening in those areas
- increased construction activity and noise during work hours
- temporary closures of Council car parks on Annie Street, Hamilton Street and at the Brisbane Jazz Club
- temporary narrowing of the Kangaroo Point Bikeway near the dog park.

The dog park will be closed for up to 4 months for works and turf establishment from late April.

When you contact Brisbane City Council, the personal information you provide will be used by Council for the purpose of responding to your enquiry and providing future information about this project. You can read more about Council's privacy policy at www.brisbane.qld.gov.au

Why is this work happening?

James Warner Park and C.T. White Park are much-loved riverside spaces with a rich history.

The land was once home to shipyards, wharves, and workshops. The soil beneath the parks tells this story with evidence of historic land contamination.

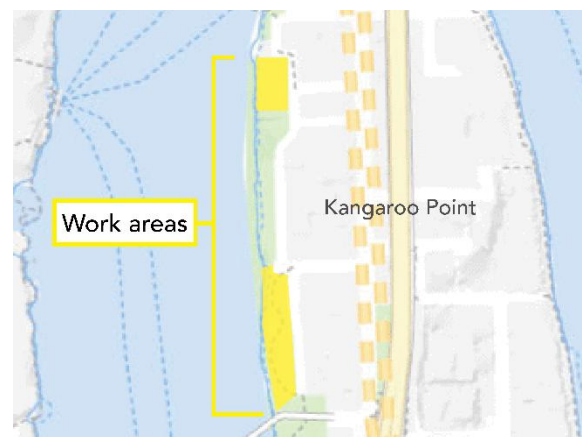
After testing the soil and carefully assessing our options, it is now time to remediate the parks to ensure they remain safe for generations to come.

This is all about protecting our environment and the spaces that make Brisbane's lifestyle even better.

Where will the works be?


We'll be working in James Warner Park and C.T. White Park, north of the Kangaroo Point Bridge.

We'll provide clear signage onsite throughout the works.




Get in touch

Have more questions? See our FAQs over the page. Alternatively, to find out more about these works, you can contact us by:

 **3178 5413** (business hours)
3403 8888 (24 hours)

 **cityprojects@brisbane.qld.gov.au**

 Visit brisbane.qld.gov.au and search 'James Warner and C.T. White parks remediation'

Frequently asked questions

Are the parks currently safe for use?

Yes. The parks and park features like the playground and dog park are safe for everyday use because the old fill material is covered by grass, mulch, or paving. We've also added extra protective layers in areas where bare soil was found. These upcoming works will improve the park for the long term by addressing historical land issues.

Will the parks be closed during the works?

Sections of the parks will need to close temporarily while we're working in those areas. The dog park may need to be closed for up to 4 months while works are underway in James Warner Park. When we start C.T. White Park works later the playground will need to be closed, but we'll provide an update on this timing when works start. At times there may also be some pathway closures and diversions in place. We'll provide clear onsite signage, so you know what's happening and when.

Will the dog park, playground, and other park features be impacted?

While some features like the dog park and playground may need to be temporarily closed briefly while works take place nearby, all features will be reinstated in the park.

Can the dog park be moved to another park as part of this project?

No, the dog off-leash area will stay in James Warner Park. Our project scope is to reinstate all existing park features, including the dog park, after the works are complete. As part of this, we'll look at improving the dog park's appearance and function, including refreshing the ground surface and installing a new deck around some trees. Please check our website for alternative dog park locations.

Why do we need to remove some trees?

Some trees need to be removed from within the remediation areas so we can safely replace the old soil. We'll plant new trees to help the parks stay green and healthy.

What are the benefits of this project?

These works will:

- Improve park health by removing old fill material and ensuring the parks meet modern safety standards for the long term.
- Restore two much-loved riverside parks as high-quality green spaces for everyone to enjoy.
- Protect and enhance the environment by retaining significant trees where possible and revitalising the parks with fresh soil and healthy vegetation.
- Preserve community amenities such as the dog off-leash area, playground, pathways, seating, signage, and public art, ensuring the parks remain welcoming and functional.

Contact us

If you would like to know more, you can scan the QR code or contact us by:



3178 5413 (business hours)
3403 8888 (24 hours)



cityprojects@brisbane.qld.gov.au



Visit brisbane.qld.gov.au and search '**James Warner and C.T. White parks remediation**'



Scan me
to find out
more