

April 2025

Moreton Bay Cycleway – Schneider Road to Viola Place

What works are coming up?

We are planning to construct a new shared path from the existing cycleway at Schneider Road, Eagle Farm, under the Gateway Motorway, and connecting to the existing bike lane at Viola Place, Brisbane Airport.

When will this work take place?

Time and	7am to 5pm, Monday to Saturday
Start	Late-May 2025
Finish	Early 2026, weather and site conditions permitting

We will be constructing a new shared path and replacing and relocating the existing weir, near the Gateway Motorway.

What does this work include?

As part of this project, we will be:

- constructing a 600-metre-long shared path, varying between 2.5 and 3-metres in width
- installing solar powered LED lights and fencing along the new shared path
- replacing and relocating the weir which crosses over a water way
- installing line marking and wayfinding signage
- landscaping and turfing.

Minor tree removals will be required to facilitate this project. All works will be in consultation with a qualified arborist.

You can view the project plan over the page or by scanning the QR code below.

Project funding

This project is jointly funded by Brisbane City Council and the Queensland Government's Cycle Network Local Government Grants Program.



Scan me to
find out more

Why is this work happening?

This project addresses a gap in our active transport network by connecting the Moreton Bay Cycleway at Schneider Road to Viola Place, which joins the Brisbane Airport precinct with a new shared path.

The new shared path will improve connectivity to existing bike lanes in the Brisbane Airport precinct and the off-road cycleway near Southern Cross Way, which is a safer route that bypasses Nudgee Road.

It also creates a direct journey from the cycleway to major employment hubs at the Brisbane Airport and Australia Trade Coast precincts, and improves access to other key destinations including the future Northshore Hamilton Precinct, Gateway Bridge Bikeway, Kedron Brook Bikeway, Jim Soorley Bikeway and the Gateway North Bikeway.

By building this new pathway, we are creating more active travel opportunities for users of all ages and abilities, helping improve safety and amenity, and saving time in your journey.

What does this mean for me?

While construction is underway, you may notice:

- increased noise, truck movements, vibration and dust
- temporary changes to pedestrian and cyclists routes when required
- temporary closure of the immediate project area to ensure safety of the local community.

We value your patience and cooperation while we deliver this important project.

Find out more

To find out more about this project, scan the QR code or speak with the project team:



3178 5413 (business hours)
3403 8888 (24 hours)



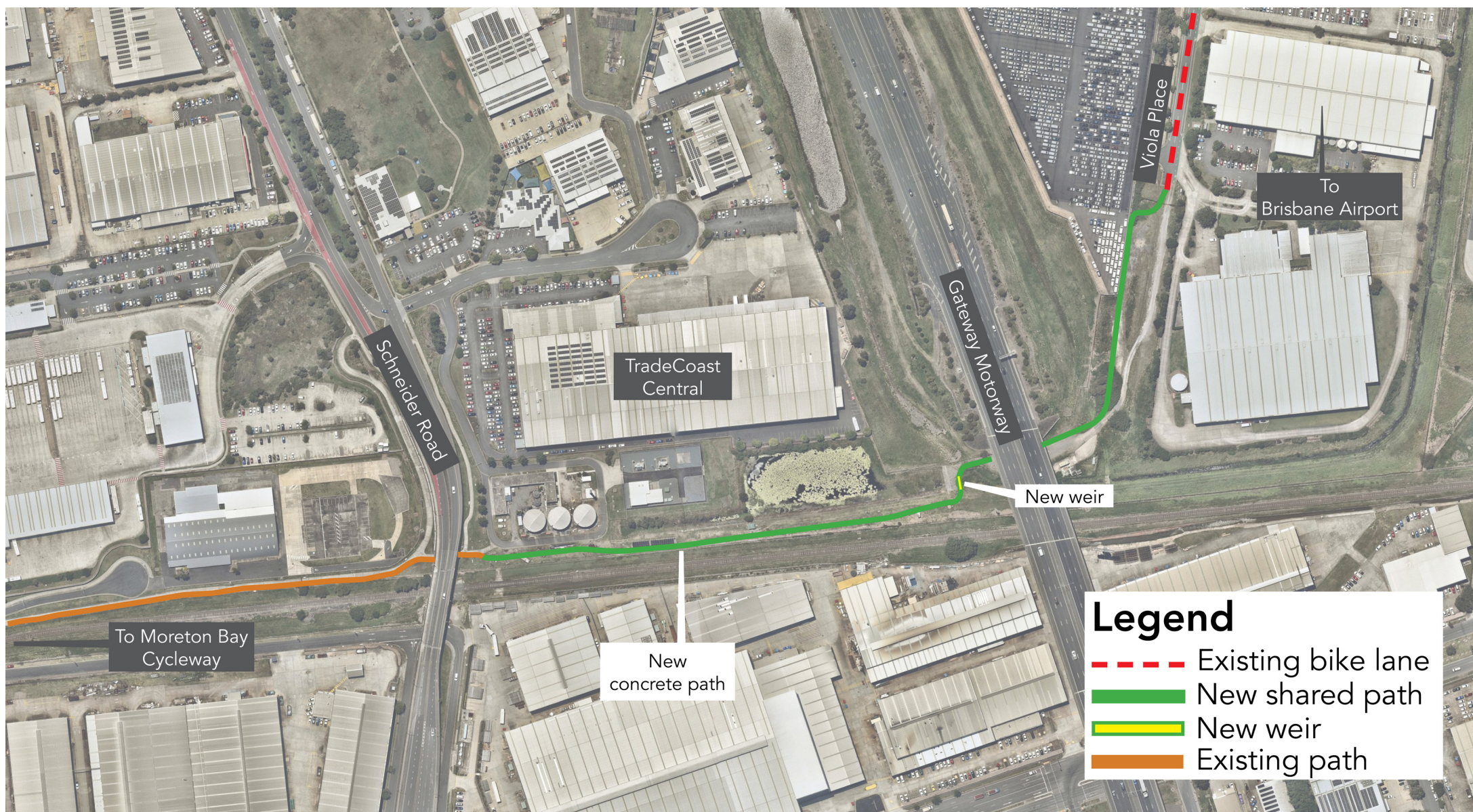
cityprojects@brisbane.qld.gov.au



Visit brisbane.qld.gov.au and search
'Moreton Bay Cycleway – Schneider Road to Viola Place'

Moreton Bay Cycleway

Schneider Road to Viola Place connection



For more information



Call 3178 5413 (8:30am-4:30pm, Monday to Friday) or 3403 8888 (24-hours)



Email cityprojects@brisbane.qld.gov.au



Visit brisbane.qld.gov.au and search 'Moreton Bay Cycleway Schneider Road to Viola Place'



Dedicated to a better Brisbane