

May 2025

Thynne Road near Kitson Street, Morningside Local Access Network Improvements

Start of construction

What works are coming up?

Council is pleased to advise works to improve safety and accessibility on Thynne Road and Kitson Street in Morningside will start soon.

When will this work take place?

Start	Early June 2025
Finish	Early July 2025, weather and site conditions permitting
Time and day	7pm to 5am, Sunday to Thursday

These works are required to be undertaken at night when traffic volumes are lowest, to ensure the safety of workers and road users and to minimise disruption to the road network.

What does this work include?

As part of these works, we are:

- installing a pedestrian refuge island and new kerb ramps on Thynne Road
- installing a pedestrian splitter island and upgrade kerb ramps on Kitson Street
- upgrading small sections of footpath
- removing one small tree to allow for the construction of a new kerb ramp
- relocating the existing loading zone outside Morningside Uniting Church further south
- completing minor turfing improvements
- painting associated line marking, including yellow 'No Stopping' lines.

On-street parking will not be permitted where yellow 'No Stopping' lines are in place to ensure safe sightlines and appropriate visibility at crossing points and to ensure lanes are wide enough for traffic to safely pass.

Please see the project plan on the next page for more details.

Why are we doing this?

Our Local Access Network Improvements program delivers important improvements to ensure our suburbs are safe and accessible for all road users, particularly pedestrians.

This project will:

- improve pedestrian connectivity by providing safer and more accessible crossing points
- delineate traffic and encourage slower and safer vehicle movements
- improve visibility for all road users.

What does this mean for me?

If you live in or are travelling through the area, you may notice:


- increased noise, dust, vibration and vehicles
- changed traffic conditions, including footpath and lane closures, and reduced speed limits
- traffic controllers and signage onsite.

On-street parking within the works area will not be available during construction.

We would like to thank you for your patience while these important works are undertaken.

Contact us

To find out more about this project, you can contact us by:

 **3178 5413** (business hours)
3403 8888 (24 hours)

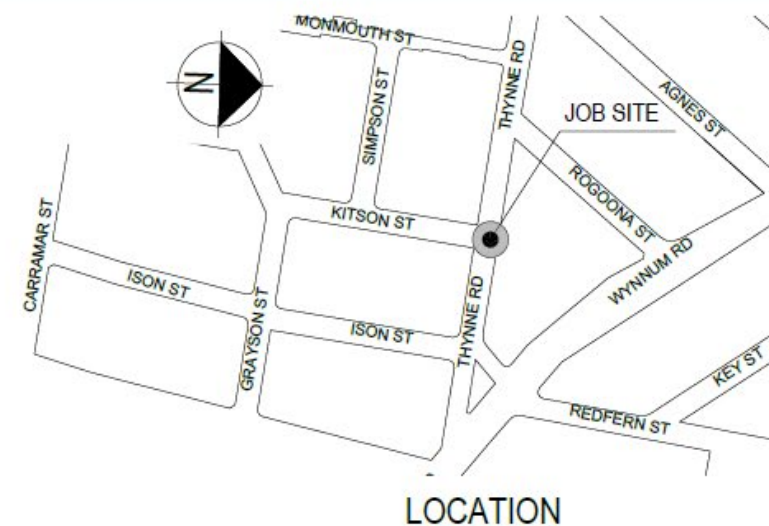
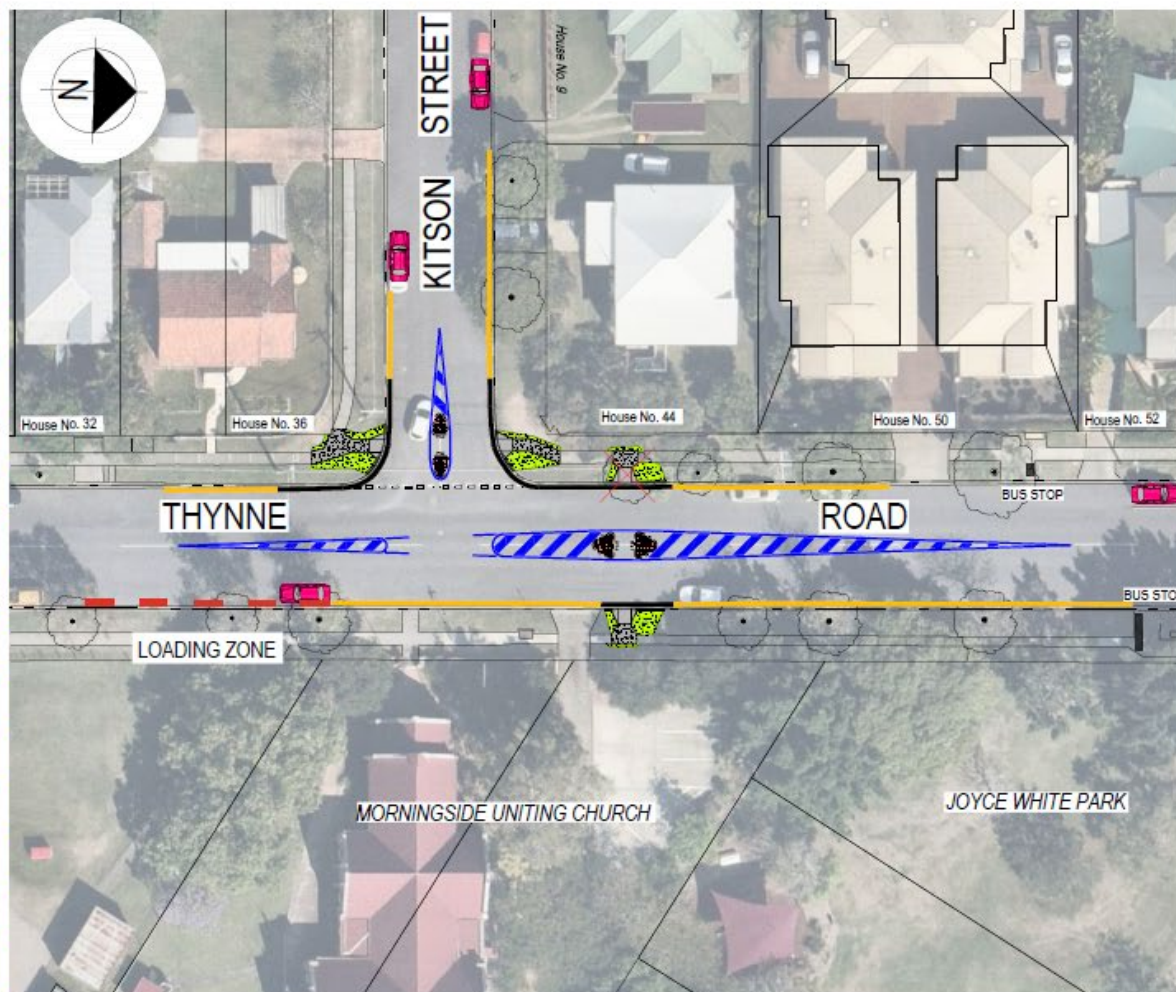
 **cityprojects@brisbane.qld.gov.au**

Visit brisbane.qld.gov.au and search 'Thynne Road near Kitson Street, Morningside Local Access Network Improvements'



LOCAL ACCESS NETWORK IMPROVEMENTS

THYNNE ROAD AT KITSON STREET - MORNINGSID



LEGEND:

-  EXISTING TREES
-  EXISTING TREES TO BE REMOVED
-  AREA TO BE TURFED
-  150mm HIGH STENCILLED CONCRETE ISLAND
-  AREA TO BE CONCRETE KERB
-  RAMP
-  INDICATES PARKING
-  PAINTED LINES (DRIVE OVER TO ACCESS PROPERTIES)
-  INDICATES LOADING ZONE
-  INDICATES NO STOPPING AREAS
-  YELLOW NO STOPPING AT INTERSECTIONS - 10m MINIMUM CLEARANCE RULE

NOTE: QLD ROAD RULES SEC.170 (4) REQUIRES NO STOPPING WITHIN 10m OF INTERSECTION.



Dedicated to a better Brisbane

SECURITY LABEL: FOR PUBLIC USE ONLY