

Walter Taylor Bridge renewal works

April 2026

What works are coming up?

We need to replace some of the bridge's structural nodes. These are the steel connections between the bridge's cables and its truss. Replacing these nodes will ensure the bridge remains safe and reliable.

To replace the nodes safely, the bridge must be carrying no load. This means the **bridge will need to be closed across selected weekends during May and June 2026.**

What this means for you

- **Traffic changes:** the bridge will be closed to all vehicles during the times listed. A section of Wharf Street, between Rosebery Terrace and Regatta Street, and Radnor Street, between Foxtan Street and Riverview Terrace, will also be closed during these times. Please plan an alternative route and allow extra travel time. For up-to-date traffic information, use the QLDTraffic app, visit QLDTraffic.qld.gov.au, or call 13 19 40.
- Overnight lane closures will occur from late April (9pm-5am, Sunday-Thursday) for scaffold installation and from mid-June for removal. Expect delays during these times.
- **Footpath changes:** the Walter Taylor Bridge footpath will close from late April 2026, and remain closed until the works are complete. Pedestrians and cyclists can continue using the Jack Pesch Bridge during this time.
- **Public transport changes:** bus routes 105, 106, 127, 598 and 599 will be impacted and temporary bus stop changes will be in place. Passengers will need to disembark on either side of the river, use the train to cross, and continue their journey by bus. Check for service updates on the Translink app or website.
- **Noise and lighting (night works):** nearby residents and businesses may experience an increase in noise and lighting coming from the work area during work hours.

When will the bridge be closed?

The bridge will be closed on the weekends listed below:

- 9pm Friday 22 May – 5am Monday 25 May
- 9pm Friday 29 May – 5am Monday 1 June
- 9pm Friday 5 June – 5am Monday 8 June
- 9pm Friday 19 June – 5am Monday 22 June

Dates and times may change depending on weather or construction conditions.

More renewal works and weekend or night bridge closures will be needed at a later date. We'll share details with you closer to the time.

Every effort will be made to minimise the impact of these works on the community.

Traffic control and signage will be on site to direct cyclists, pedestrians and vehicles during the closures.

Finished early? We'll let you know

If the works are completed sooner than expected, we'll reopen the bridge ahead of schedule.

We encourage you to join our mailing list to receive project updates and **register for SMS alerts for real time information** by contacting us on the below listed details.

Thank you for your patience while we undertake these important works. These works will help protect the bridge's long term future and ensure it continues to serve the community for decades to come.

CONTACT US

If you have any questions about the project, scan the QR code or contact us via:



3178 5413 (business hours)
3403 8888 (24 hours)



cityprojects@brisbane.qld.gov.au



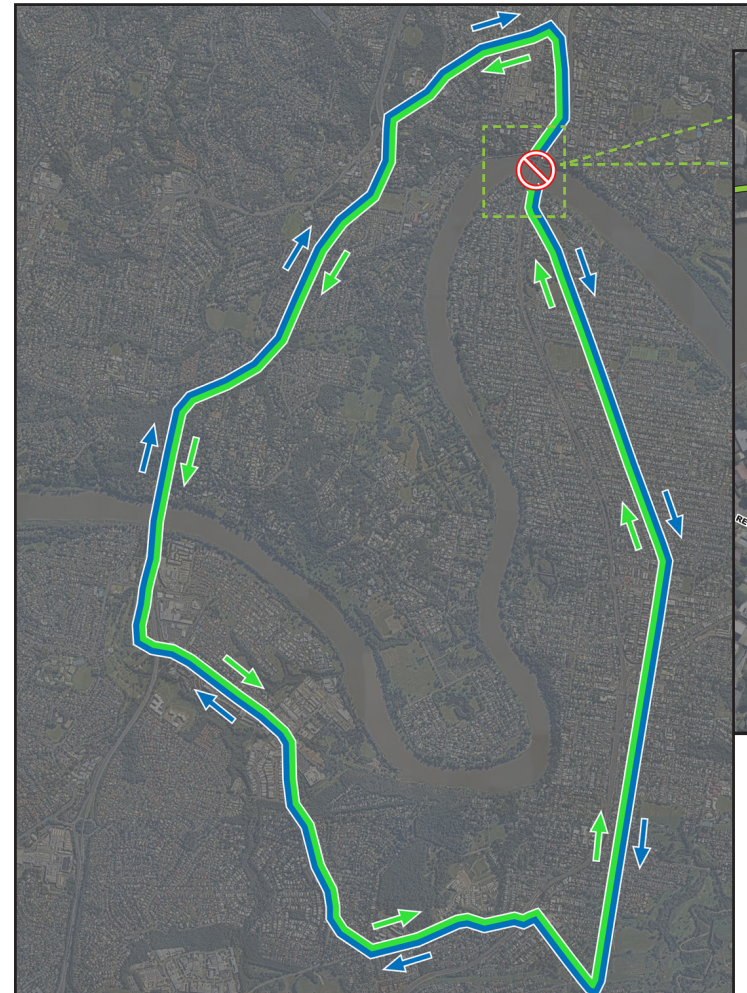
Footpath detour during the Walter Taylor Bridge node renewal works



Legend

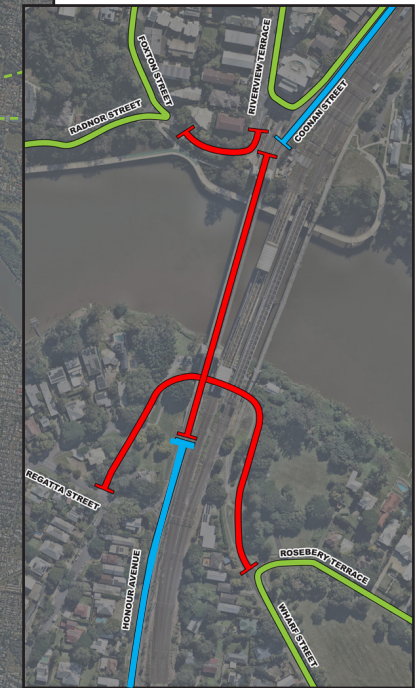
- █ Walter Taylor Bridge closed
- - - Accessible detour for pedestrians and cyclists via Jack Pesch Bridge and Indooroopilly Riverwalk
- - - Detour via stairs to Jack Pesch Bridge and Indooroopilly Riverwalk

Road detour during the Walter Taylor Bridge full closure



Legend

- █ Oxley Road, Seventeen Mile Rocks Road and Centenary Highway
- █ Centenary Highway, Seventeen Mile Rocks Road and Oxley Road



Legend

- █ Closed - Radnor Street, Wharf Street and Walter Taylor Bridge
- █ Open - Coonan Street, Radnor Street and Wharf Street
- █ Local traffic only