



Dedicated to a better Brisbane

Wynnum Manly Safer School Precinct Community Consultation Report



About the Wynnum Manly Safer School Precinct

Brisbane City Council is working with our community to create Safer School Precincts across our city.

Our Safer School Precincts program will improve safety and ease congestion around schools by creating safer and more convenient ways for you to move around your local suburbs.

The Wynnum Manly Safer School Precinct is the third precinct to start the impactful program which combines community engagement, infrastructure improvements and behaviour change to deliver safer and more convenient ways to move around the area.

The Wynnum Manly Safer School Precinct will focus on treatments that improve how you move around the local streets where you live, work, learn and play.

The precinct supports 3 local schools and the surrounding residents and businesses in Brisbane's popular bayside suburbs.

Manly State School	Prep – Year 6 (boys and girls)	Approx. 670 students
Wynnum State High School	Years 7 – 12 (boys and girls)	Approx. 1,100 students
St John Vianney's Primary School	Prep – Year 6 (boys and girls)	Approx. 470 students



About the community consultation

We wanted to empower you to work with us to help create the plan for the Wynnum Manly Safer School Precinct.

To help us create the best possible precinct for the community, we invited you to have your say as part of a precinct-wide community consultation in September 2025. The 6-week consultation was open to everyone who lives, works, learns or visits the Wynnum Manly Safer School Precinct.

Your feedback helped us understand how you move and how you want to move through your precinct, as well as your ideas on how we can improve transport options around the Wynnum Manly Safer School Precinct.

We are using your feedback alongside our technical data to create the plan of treatments to help ease congestion and improve safety around your schools and suburbs.

Digital engagement

Digital engagement was a key part of this consultation. You could have your say through an online survey and mapping tool. The online survey provided valuable insights about your experience in the Wynnum Manly Safer School Precinct and the barriers and opportunities you see. The survey received 380 responses, providing us with 18,545 pieces of feedback.

The mapping activity allowed you to put pins on a map of the precinct to highlight potential improvements. One hundred and six people added 363 pins on the map.

Engagement promotion

To help you share your experiences and learn more about what's possible in the Wynnum Manly Safer School Precinct, we created a range of supporting and promotional collateral.

We activated the precinct with corflutes to raise awareness and direct people to the program website. We also promoted the consultation on social media and implemented digital marketing tactics across TV screens at Wynnum Plaza and bus stop furniture in the precinct.

To support you to make informed decisions, we created and shared the Precinct Playbook with you to highlight what's possible with this program.



Consultation snapshot



380 responses
to the
online survey



363 pins
on the
mapping activity



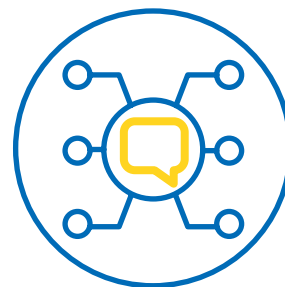
18,545
pieces of
feedback received



1,414
visits to the
Wynnum Manly Safer
School Precinct webpage



474,199
people
reached



People saw Safer School
Precinct messaging
1,030,740
times



232,000
people reached via
social media

What you said

About the community

Understanding more about the community that live and move in the Wynnum Manly Safer School Precinct helps inform the treatment plan.

Based on your feedback, we know:

- 23.3% of respondents are a part of the precinct's school communities
- 35.7% of respondents live in or close to the precinct
- 14.8% of respondents visit or travel through the precinct regularly
- 5.1% of respondents work in or close to the precinct



Your experience moving around the precinct

When we asked you about your current experience moving around the Wynnum Manly Safer School Precinct, nearly half of you (45.4%) said your experience was poor or very poor.

However, only 25.7% rated your experience as good or very good. Almost a third (29.01%) of you said that the main cause of congestion in the precinct area is queuing due to popular destinations like shopping centres and schools. This indicates that moving within the precinct is easier outside of school drop-off and pick-up times.

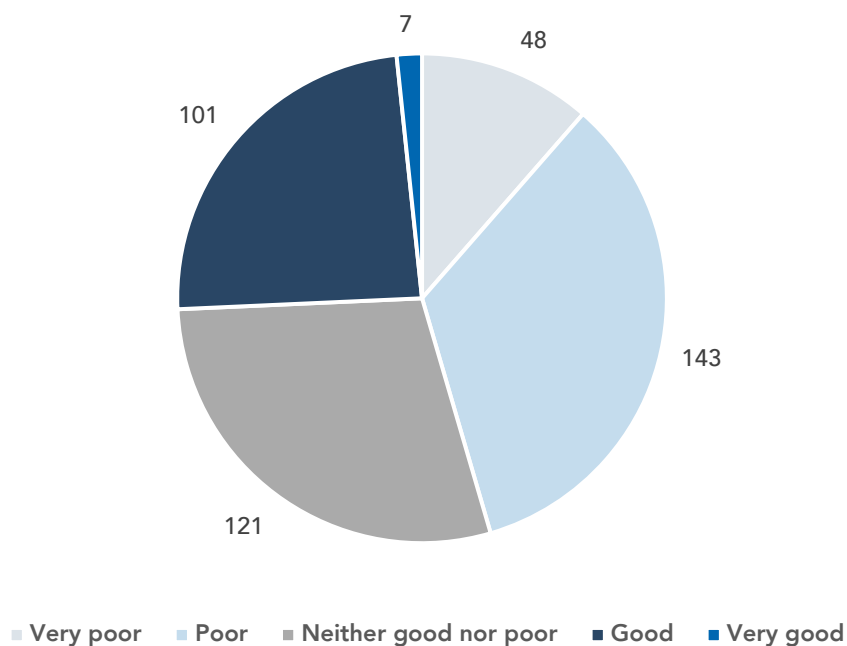
Traffic congestion is a significant concern for you, with 75% rating traffic congestion in the precinct as major or moderate.

Many of you are also concerned about road safety in the precinct, with over half of you (54.3%) rating it as somewhat or very unsafe.

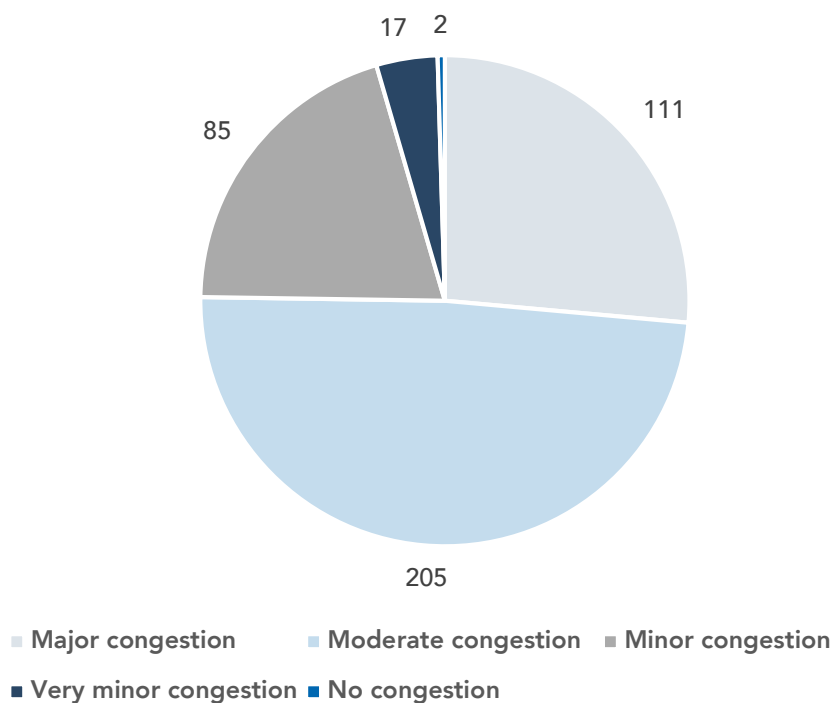
Top 3 perceived causes of congestion in the precinct

1. Queuing due to popular destinations like shopping centres or schools
2. Unsafe driver behaviour e.g. speeding, illegal parking, blocking traffic flow
3. Limited access points in and out of the precinct area

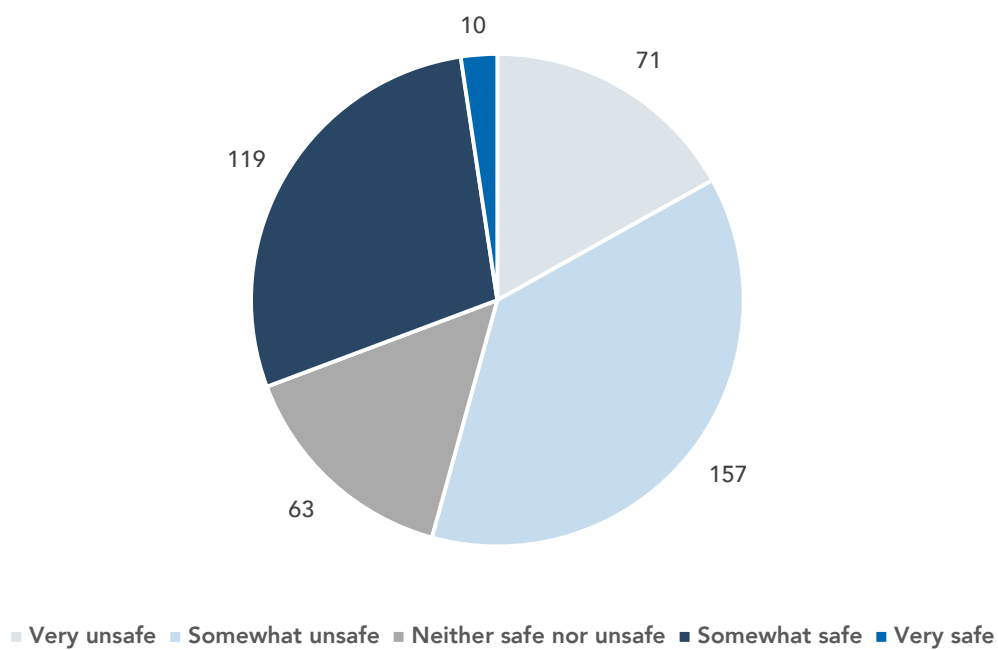
Rating of current transport experience



Rating of perceived traffic congestion in the precinct



Rating of perceived road safety in the precinct



What you said

How you move

Walking

When we talk about walking, we are referring to people moving on foot, people using mobility aids and people pushing prams.

This is important because our walking network should be accessible to people of all ages and abilities.

Top 3 things that help you enjoy walking

1. Walking paths and crossings are in convenient locations
2. Walking is safe (e.g. well lit, clear lines of sight)
3. Pathways are wide enough and in good condition

Top 3 things preventing you from walking more

1. Limited or no crossings
2. Unsafe driver behaviour or vehicle speeds
3. Too many cars

Riding

Riding includes riding a bike, scooter or e-mobility devices like e-scooters.

These are grouped together as they use the same type of infrastructure and can travel at similar speeds.

Top 3 things that help you enjoy riding

1. Pathways are wide enough for pedestrians and riders
2. Pedestrians, riders and motorists are physically separated
3. Good pathway connectivity

Top 3 things preventing you from riding more

1. Limited or no separated bikeways
2. Unsafe driver behaviour (e.g. speeding, illegal parking, blocking traffic)
3. I (or my family) feel unsafe riding on the street



Buses

Many people catch the bus to get around. This includes people catching dedicated school bus services, known as district services, and public services managed by Council.

Top 3 things that help you enjoy catching the bus

1. Buses have good connections with active transport and other public transport options
2. Buses are an affordable way to travel
3. Bus stops are conveniently located

Top 3 barriers to catching the bus

1. Bus arrivals can be unpredictable
2. Bus schedules are inconvenient
3. I want to go somewhere the bus does not service

Driving

When we asked about your experience driving, we included your perspectives as a motorcycle rider and passenger or driver of a car.

Top 3 things that help you enjoy driving

1. Convenient drop-off and pick-up zones near popular destinations like shops and schools
2. Parking is conveniently located and available
3. Low levels of congestion

Top 3 things preventing you from driving more

1. Drop-off or pick-up areas are too congested to use
2. High levels of congestion
3. Limited parking availability where I (or my family) want it



What you said

Common themes/top ideas for improvement

As part of our review of what you've said, we've found some common themes in your feedback.

You said: *We want convenient drop-off and pick-up zones.*

We heard convenient drop-off and pick-up zones are important to you as they are one of the things you enjoy most about driving. However, congested drop-off and pick-up zones prevent you from driving as much as you'd like to. You think the drop-off and pick-up areas do not currently meet the needs of the precinct community.

Queuing for drop-off and pick-up zones, and parked cars blocking road or driveway access, all contribute to congestion on our roads and road safety issues in the precinct.

What we can do

We can improve parking and traffic options to make school drop-off and pick-up faster and easier, as well as reducing unsafe queuing.

You said: *Unsafe driver behaviour is preventing you or your family from walking and riding in the area.*

There's a high number of drivers who are unaware or choose not to follow the Queensland Road Rules for driving and parking in the precinct. This is preventing you from walking and riding more often in the precinct as you and/or your family feel unsafe.

What we can do

There is a range of treatments we could implement to help improve driver behaviour.

This could be changing the street environment, educating drivers or working with the Queensland Police Service for additional enforcement of the Queensland Road Rules.

You said: *We want more pedestrian crossings.*

Having safe, convenient and dedicated pedestrian crossings is important to you. You want to see more pedestrian crossings that will make it safer and easier for you to get where you want to go.

What we can do

We can make crossing the street safer by installing more pedestrian crossings in key locations.

You said: *We want better on-street parking.*

Being able to easily and safely park on your local streets is important to you. You think there is limited on-street parking availability, which is leading to unsafe parking behaviours. Parked cars blocking road or driveway access and circling the block for a free parking space also contributes to congestion on your roads.

You want to see changed on-street parking conditions that meet the needs of the community, help the flow of traffic and improve safety for all road users.

What we can do

We can make simple changes to how and where cars park to maximise capacity while also improving accessibility and availability.

You said: *Speeding is a concern.*

Many cars speed in your streets, particularly around school drop-off and pick-up times, which makes you feel unsafe.

You want to see reduced speed limits that suit your local streets and drivers adhering to the posted speed limits.

What we can do

To encourage drivers to choose safer speeds, we can install traffic calming treatments such as speed bumps, extend school zones or add Speed Awareness Monitor (SAM) signs.



You said: *Queuing due to popular destinations like shopping centres and schools is one of the main causes of congestion in the area.*

You said the traffic congestion at school drop-off and pick-up times makes moving around the precinct difficult. Drivers queue through intersections, park illegally or block driveways and you think this causes many of the road safety and congestion issues.

What we can do

We can make it easier and safer to get you where you want to go by improving how intersections operate. To reduce car usage, we can enhance walking, riding and public transport options by upgrading pathways and bus stops.

You said: *We want better footpaths.*

Having smooth, wide and connected footpaths will encourage you to walk more often – and you want to walk more often.

High quality footpaths make it easier for you to get around safely, including people using prams or mobility devices.

What we can do

We can improve connections by providing high-quality footpaths that make it easier and safer for everyone to get around – including prams, wheelchairs or other mobility devices.



Next steps

Thank you for helping create the plan for the Wynnum Manly Safer School Precinct.

Your feedback is helping shape the plan of treatments that will improve safety and ease congestion around your schools and suburbs.



Phase 1: Consult

- **Precincts defined**
We identified precinct areas and completed technical investigations.
- **Community consultation**
We engaged with residents, businesses and school communities to understand how you move around and what you want to see in the precinct.
- **Consultation report**
We shared a summary of your feedback and the insights you've given us.

Phase 2: Deliver

- **Develop precinct plan**
We use your insights and our technical expertise to create a precinct plan.
- **Precinct plan activation**
We share the precinct plan with you to ensure it balances the needs of your precinct community.
- **We deliver new and improved infrastructure**

Phase 3: Empower

- **Use community insights**
We use your insights to identify ways to empower your community.
- **Empower behaviour change**
We provide behaviour change programs, tools and resources to help schools and the community take advantage of your new Safer School Precinct.







Dedicated to a better Brisbane

Brisbane City Council
GPO Box 1434
Brisbane Qld 4001




Every effort is made to ensure that
information is correct at time of printing

Printed on sustainable paper



IMAP-200000023-01-7238
©2025 Brisbane City Council

 brisbane.qld.gov.au
 3403 8888

 /BrisbaneCityCouncil
 @brisbanecityqld
 @brisbanecitycouncil