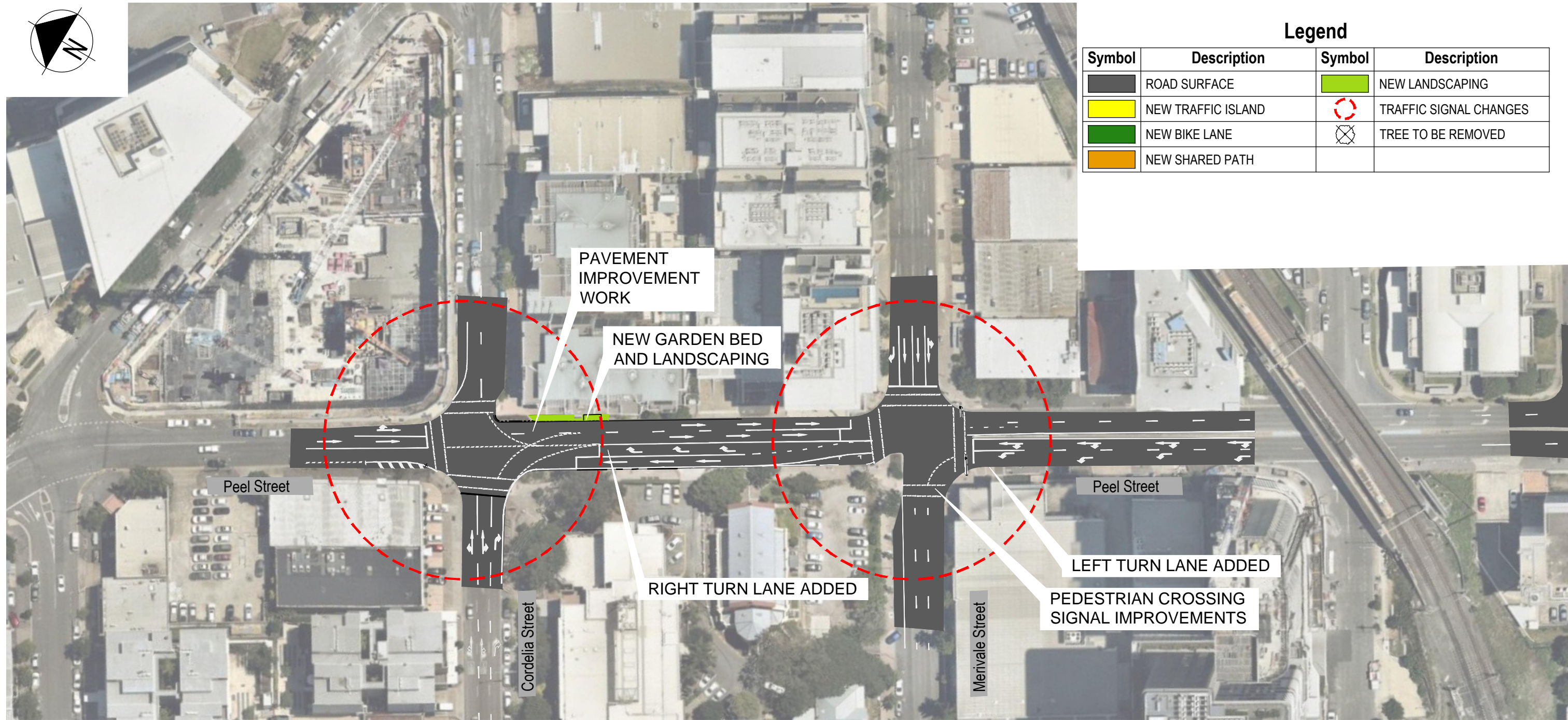
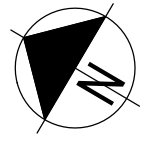


PEEL STREET / CORDELIA AND MERIVALE STREETS INTERSECTION IMPROVEMENTS



Legend

Symbol	Description	Symbol	Description
	ROAD SURFACE		NEW LANDSCAPING
	NEW TRAFFIC ISLAND		TRAFFIC SIGNAL CHANGES
	NEW BIKE LANE		TREE TO BE REMOVED
	NEW SHARED PATH		

IMAGERY AND CADASTRAL DATA DISCLAIMER
While every care is taken to ensure the accuracy of the data supplied by BCC and NRM, BCC and NRM jointly and severally make no representation or warranty about the accuracy, reliability, completeness or suitability for any particular purpose and disclaim all responsibility and all liability (including without limitation, liability or negligence) for all expenses, losses, damages (including indirect or consequential damage) and costs which may be incurred as a result of data being inaccurate or incomplete in any way and for any reason.

Based on Data provided with permission of the Department of Natural Resources, Mines and Energy (DNRM) 'Cadastral Data'

nearmap.com
Brisway
DIGITALGLOBE
Qasco
TIGER
webmap
GDA



SECURITY LABEL: FOR OFFICIAL USE ONLY *Dedicated to a better Brisbane*

For more information about this project, please call the Project Team on 1800 692 333.

PROJECT PLAN
NOVEMBER 2018

CD 161190/402 NOVEMBER 2018