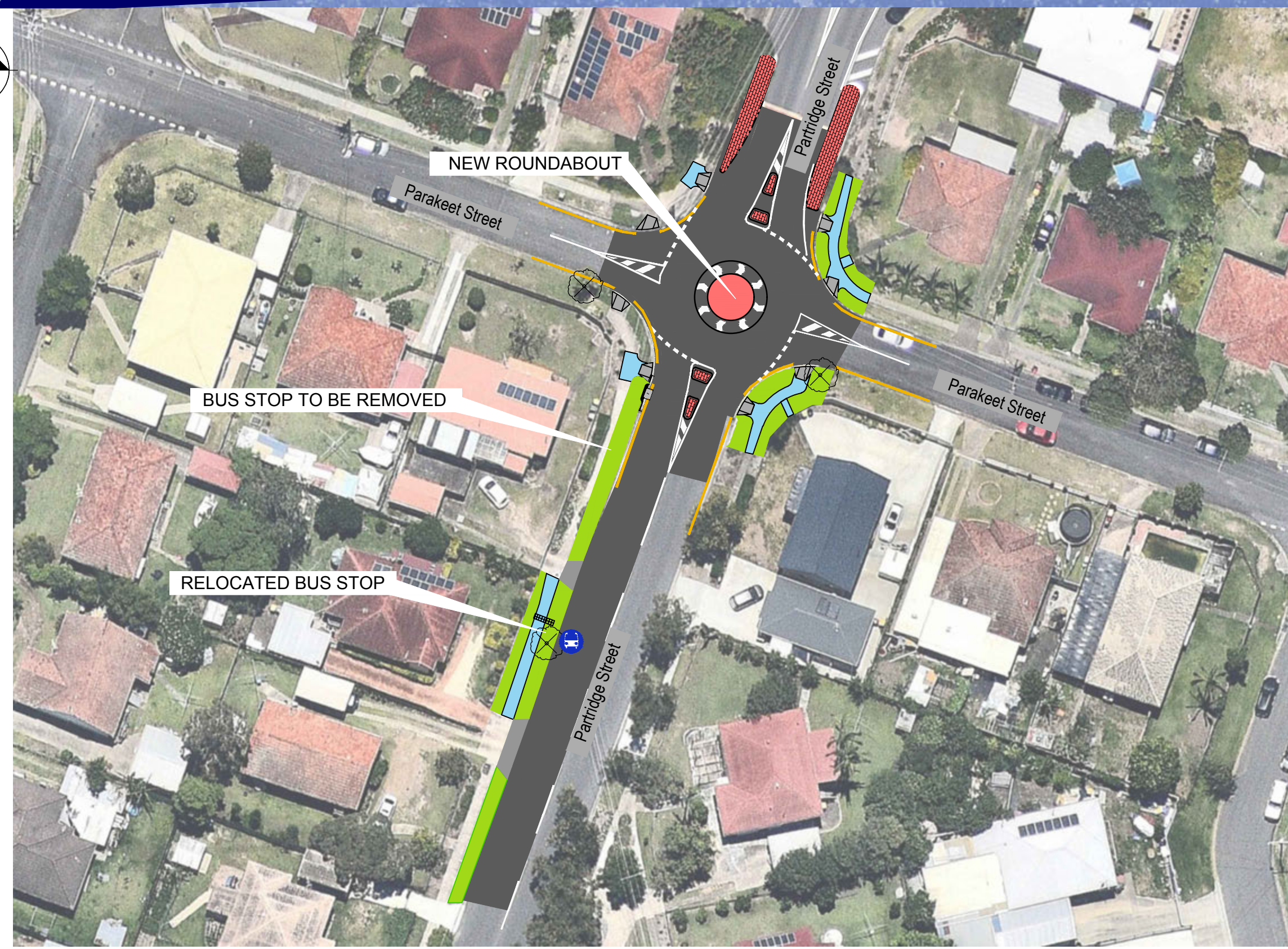
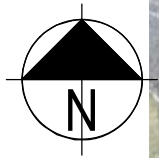


BLACK SPOT PROGRAM PARAKEET ST AT PARTRIDGE ST INALA

BUILDING BRISBANE'S FUTURE



Legend	
Symbol	Description
	ROAD SURFACE
	NEW CENTRE ISLAND
	NEW TRAFFIC ISLAND
	NEW FOOTPATH
	NEW LANDSCAPING
	NEW DRIVEWAY
	NEW BUS STOP
	TREE TO BE REMOVED
	NO STANDING LINE

180630 / 4/2

IMAGERY AND CADASTRAL DATA DISCLAIMER
While every care is taken by Brisbane City Council (BCC) and the Department of Natural Resources, Mines and Energy (DNRM) to ensure the accuracy of the data supplied to BCC and NRM, BCC and NRM jointly and severally make no representations or warranties about its accuracy, reliability, completeness or suitability for any particular purpose and disclaim all responsibility and all liability (including without limitation, liability in negligence) for all expenses, losses, damages (including indirect or consequential damage) and costs which may be incurred as a result of data being inaccurate or incomplete in any way and for any reason.



Dedicated to a better Brisbane

For more information about this project, please call the project team on 1800 669 416.

PROJECT PLAN
JANUARY 2019