

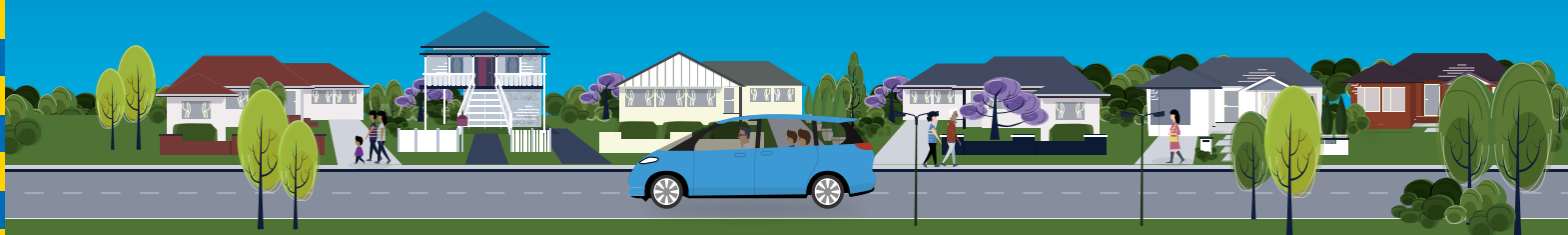
Getting you home quicker and safer.



Australian Government



Dedicated to a better Brisbane



Commercial Road and Doggett Street intersection upgrade Newstead

PROJECT NEWSLETTER | DECEMBER 2019

Brisbane City Council is planning to upgrade the Commercial Road and Doggett Street intersection to improve overall intersection operation and safety for all road users.

Council has been working with the local community to obtain feedback about the proposed design for the Commercial Road and Doggett Street intersection upgrade.

The intersection has been identified as a location requiring safety improvements, particularly for pedestrian movements across Commercial Road due to the large volume of pedestrians in the area. The intersection carries approximately 20,000 vehicles, 320 cyclists and 2,100 pedestrians per day.

Approximately 84 per cent of feedback received during the project's consultation phase, including at two public information sessions, supported the intersection upgrade.

The upgrade will significantly improve safety for all road users at the intersection, particularly for pedestrian movements across Commercial Road with controlled pedestrian crossing facilities.

Council would like to thank local residents, businesses, road users and other members of the community who provided feedback and looks forward to delivering this project.

This project is jointly funded by Council and the Australian Government through the Urban Congestion Fund.

Project features

- Signalising the intersection with traffic lights and controlled pedestrian crossing facilities
- Extending the right-turn pocket, west and eastbound, on Commercial Road
- Installing a right-turn pocket southbound on Doggett Street
- Converting Doggett Street to a oneway street for northbound traffic only, between Commercial Road and Longland Street
- Removal of four on-street parking bays on Doggett Street and six on-street parking bays on Commercial Road
- Relocation of the Australia Post box and loading zone on Commercial Road
- Installing on-road bike boxes on Commercial Road at the intersection
- Kerb and channel works
- Resurfacing and line marking.

THIS IS BRISBETTER

Brisbane just keeps getting better. We're making better flowing roads with the Better Roads for Brisbane plan.

To find out more ways we're making Brisbane better, visit Council's website and search 'Brisbetter'.

Community feedback

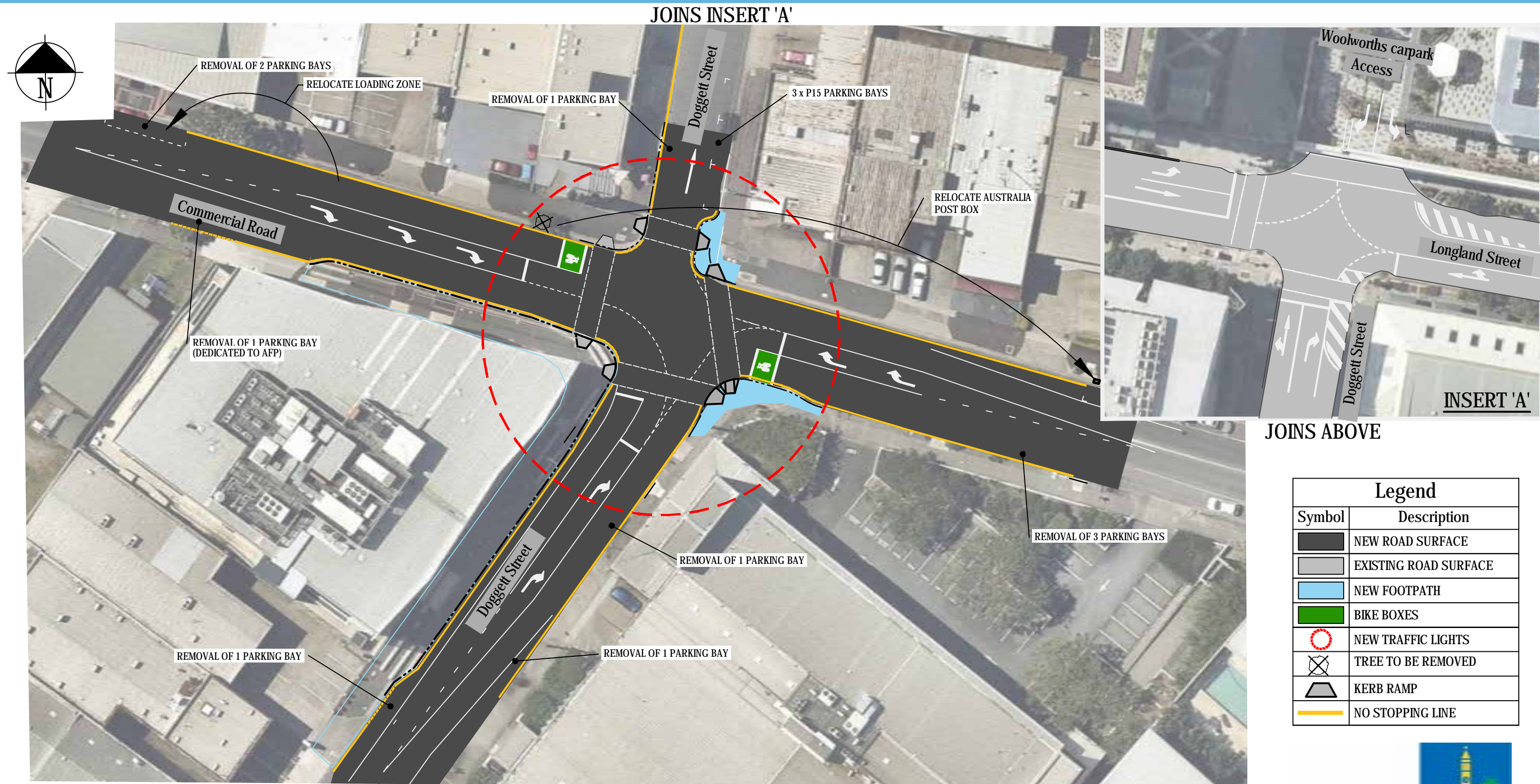
Key themes raised during consultation, with Council's response detailed below:

Key community feedback	Council's consideration and response
Traffic signals preferred option over a roundabout	<p>The signalised intersection provides safe and controlled movements for all road users. The project will provide right-turn pockets for turning vehicles to allow motorists to wait safely for the green arrow without impacting through traffic movements. A signalised intersection provides safe and controlled pedestrian crossing facilities.</p> <p>A roundabout is not preferred in this location due to the high volume of pedestrians crossing the intersection. Additionally, the land required for a roundabout is not feasible without significant property resumption.</p>
Pedestrian connectivity	<p>The existing two zebra crossings will be replaced with controlled signalised crossings on the four approaches to the intersection.</p> <p>The project proposes to introduce a signalised scramble crossing, which allows pedestrians to cross the intersection in all directions at the one time. This will also help to improve safety by removing potential conflicts between vehicles and pedestrians and reduce wait times at the intersection for pedestrians and motorists.</p>
Increased traffic in local streets with Doggett Street converted to one-way	<p>The project proposes to convert Doggett Street to oneway for northbound traffic, between Commercial Road and Longland Street. This will address safety concerns through this narrow section of Doggett Street and will ease congestion impacts at the Commercial Road intersection.</p> <p>Motorists are encouraged to use either Kyabra Street or Masters Street to travel southbound towards Commercial Road. The intersection of Longland Street and Doggett Street will change to prevent movements into Doggett Street. This will also prevent through movements from the Gasworks car park, at Longland Street.</p> <p>Traffic modelling indicates minimal increase in traffic volumes on local streets however, Council will monitor the local area following completion of the works to ensure the upgrade performs as anticipated.</p>
Cycling facilities and connectivity	<p>New on-road bike boxes are proposed on Commercial Road at the intersection to allow cyclists to move to the front of the lane when stopped at a red light. This will also increase awareness by providing a space where people riding a bike are clearly seen by all users at the intersection.</p> <p>Bike parking facilities are also being investigated and may be incorporated if safe storage areas can be found that do not impact the footpath area.</p>
Australian Federal Police bollards	<p>The Australian Federal Police (AFP) are planning to replace the existing temporary concrete barriers with steel bollards on the footpath in front of their building on the corner of Commercial Road and Doggett Street. This project is separate to the Council's intersection upgrade.</p> <p>The timing for this work is yet to be finalised, however Council is working with the AFP to coordinate these works with the intersection upgrade.</p>
Removal of on-street parking	<p>To facilitate the upgrade and allow provision to extend the right-turn pockets, six parking bays on Commercial Road and four parking bays on Doggett Street will be removed.</p> <p>In addition, the Australia Post box on Commercial Road will be relocated approximately 80 metres east of the current location, and the loading zone on Commercial Road will be relocated approximately 20 metres west of the current location.</p>
Impact to traffic flow	<p>Changing Doggett Street to oneway will reduce the impacts of congestion at the Commercial Road intersection by eliminating one traffic phase.</p>



Getting you home
quicker and safer.

COMMERCIAL ROAD AND DOGETT STREET INTERSECTION NEWSTEAD



For more information on this project please
call the Project Team on **1800 884 681**.

DATA INFORMATION
Brisbane City Council (unless stated below)
Cadastral: © 2013 Department of Natural Resources and Mines
Contours: © 2013 ANZLIC
Street: © 2013 Department of Transport and Main Roads
2013 Aerial Imagery: © 2013 ANZLIC
2013 Aerial Imagery: © 2013 ANZLIC
2013 Aerial Imagery: © 2013 ANZLIC
2013 Aerial Imagery: © 2013 ANZLIC
2013 Aerial Imagery: © 2013 ANZLIC
2013 Aerial Imagery: © 2013 ANZLIC

In consideration of Council, and the copyright owners listed above,
permitting the use of this data, you acknowledge and agree that
Council and the copyright owners, give no warranty in relation to the
data (including accuracy, reliability, completeness, currency or
suitability) and accept no liability (including without limitation, liability in
negligence) for any loss, damage or costs (including consequential
damages), relating to any use of this data.

PROJECT PLAN
October 2019



Australian Government



Dedicated to a better Brisbane

SECURITY LABEL: FOR OFFICIAL USE ONLY

Project timing




Information session October 2019 at Gasworks Plaza

More information

To find out more about this project you can:

-  phone 1800 884 681(business hours) or 3403 8888
-  visit brisbane.qld.gov.au and search 'Commercial Road and Doggett Street intersection upgrade'
-  email the project team: cityprojects@brisbane.qld.gov.au

-  Write to Commercial Road and Doggett Street intersection upgrade project team:
City Projects
Brisbane City Council
GPO Box 1434
Brisbane Qld 4001

Brisbane City Council
GPO Box 1434
Brisbane Qld 4001

Every effort is made to ensure that
information is correct at time of printing






Printed on sustainable paper



CA19-101956102-4674
©2019 Brisbane City Council

 brisbane.qld.gov.au
 3403 8888

 /BrisbaneCityCouncil
 @brisbanecityqld
 @brisbanecitycouncil