

NORTH BRISBANE BIKEWAY

Webster Road to Nevin Street, Aspley

Project introduction February 2021



Dedicated to a better Brisbane

Brisbane City Council is pleased to release the project plan for the North Brisbane Bikeway: Webster Road to Nevin Street project.

This project is part of Council's commitment to expanding our city's active transport network to deliver safe, convenient and connected bikeways, helping to improve active transport options for Brisbane residents, visitors and commuters.

Council will be delivering this new cycling facility in stages between Webster Road at Aspley Lions Club Park and Nevin Street in Aspley, via the Gympie Road service road. The service road will become a safer, lower speed environment for cyclists of all experience levels and local traffic.

This project will extend the popular North Brisbane Bikeway route from Marchant Park at Webster Road, creating a new recreation and commuter route along Gympie Road for residents in the northern suburbs and improving access to local destinations and the CBD.

Project summary

The first stage of works will be delivered on the Gympie Road service road and includes:

- Creating a safer, low speed environment on the service road for cyclists and local traffic with speed platforms, landscaped kerb build outs, traffic islands and access changes.
- Installing wayfinding signage to help cyclists connect with the local bikeway network and amenities.

Subject to consultation with the Queensland Government Department of Transport and Main Roads (TMR), Council proposes to deliver the remaining stages of this project, involving:

- Constructing a three-metre-wide shared path from the end of the Gympie Road service road, near the Aspley Hotel, through to Nevin Street.
- Constructing a shared path connection from Webster Road at Aspley Lions Club Park to Ellison Road.

For more information about the features along the Gympie Road service road, please refer overleaf.

Next steps

We are committed to delivering the first stage of works on the Gympie Road service road by mid-2021, in line with the Queensland Government's funding requirements. More information about construction impacts will be provided to the community prior to construction starting in the coming weeks.

Council is currently consulting with TMR to confirm the proposed shared path connections between the service road and Nevin Street, and Webster Road and Ellison Road via Aspley Lions Club Park. We will provide the community with an update on the delivery of these remaining stages of work when more information becomes available.

Council is also investigating options to extend the bikeway from Nevin Street to Robinson Road West, with design and construction dependent on future funding allocation.

Benefits



Safe and continuous cycle facilities, providing more active travel opportunities for commuters on Gympie Road



Improve accessibility to local amenities such as recreational parks, sporting facilities, shopping centres, local businesses and public transport



Improve pedestrian crossing points

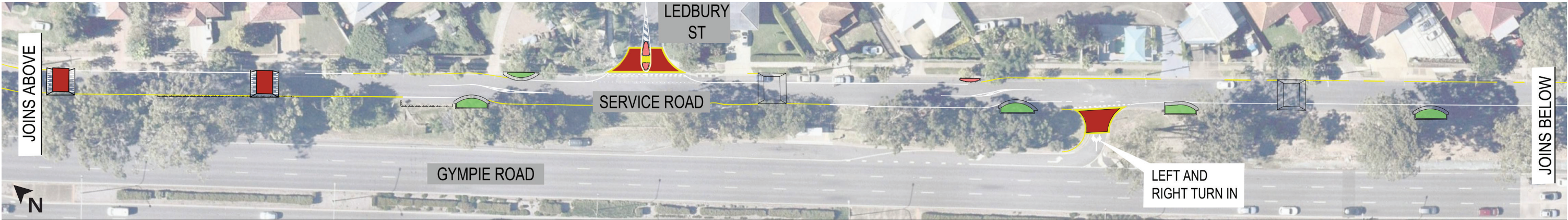
Funding

The North Brisbane Bikeway: Webster Road to Nevin Street is an initiative of the Queensland Government. The project is funded by the Queensland Government Works for Queensland grants program and will be delivered by Brisbane City Council.

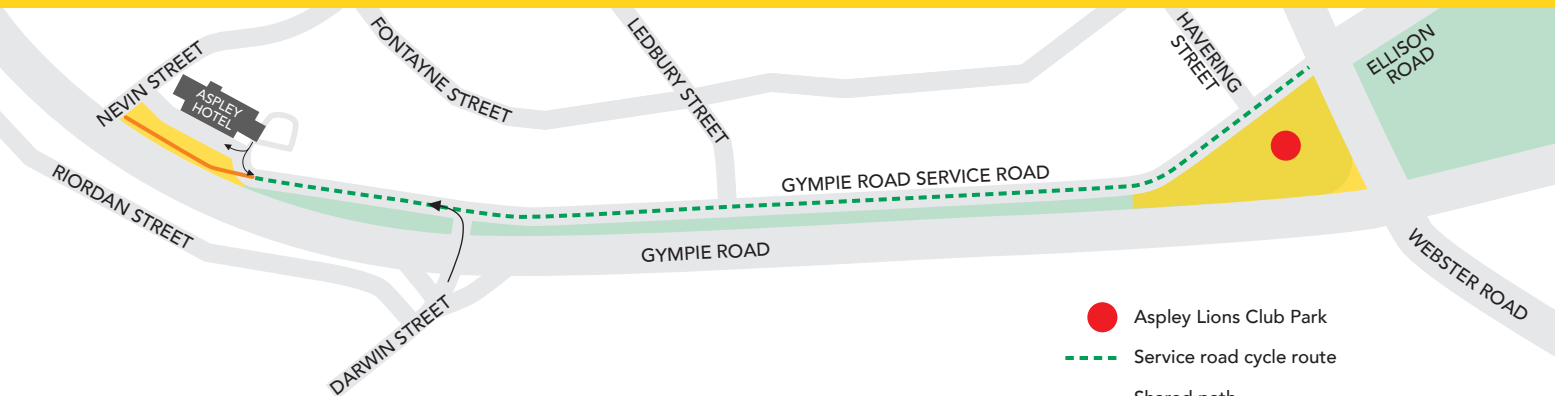


Queensland Government

North Brisbane Bikeway: Webster Road to Nevin Street



Legend			
Symbol	Description	Symbol	Description
	YELLOW NO STOPPING LINE		SHARED PATH
	LANDSCAPING KERB BUILDOUT		EXISTING SPEED PLATFORM
	TRAFFIC ISLAND		NEW SPEED PLATFORM
	TREE TO BE REMOVED		PAINTED THRESHOLD TREATMENT
	CONNECTION CURRENTLY BEING INVESTIGATED WITH TMR		



- Aspley Lions Club Park
- Service road cycle route
- Shared path
- Connection currently being investigated with TMR

Gympie Road service road

The overall project alignment will include a new cycling facility between Webster Road and Nevin Street via the Gympie Road service road. The first stage of works to be delivered will be on the Gympie Road service road.




The Gympie Road service road will become a low speed local road that will serve as a cycle route while remaining open to local vehicle traffic.

The design will provide a safe environment for cyclists of all experience levels by reducing the speed limit and moderating vehicle speeds with traffic calming devices such as speed platforms, traffic islands and kerb build-outs.

Features of the Gympie Road service road will include:

- decreasing the speed along the Gympie Road service road to 40km/hr to enhance safety for all road users
- installing four new speed platforms, modifying one speed platform and relocating one speed platform
- installing new traffic islands and landscaped kerb build-outs
- changing motorist movements from Darwin Street into Gympie Road service road to left-in/left-out only (no right-turn permitted)
- changing the slip lane entrance near the Aspley Motor Inn to allow left and right turns onto Gympie Road service road
- installing line marking and signage.

MORE INFORMATION

-  Call **1800 884 681** (during business hours)
3403 8888 (after hours)
-  Email bikeway.projects@brisbane.qld.gov.au
-  **Write to:** North Brisbane Bikeway:
Webster Road to Nevin Street project
City Projects Office
GPO Box 1434, Brisbane Qld 4001
-  Visit Council's website at brisbane.qld.gov.au
and search 'North Brisbane Bikeway Webster Road to Nevin Street'



On-street parking

To accommodate these changes to the Gympie Road service road, 45 on-street parking spaces will be removed on the service road and 53 on-street parking spaces will remain.

As part of Council's investigations, a parking survey identified that parking along the service road was being underutilised, with less than 10% of car spaces being used. Council is confident the remaining 53 car parking spaces on Gympie Road service road will service the needs of the local community.



Bus stops

Subject to consultation with TMR about the proposed shared path connection between the service road and Nevin Street, inbound bus stop 41a (stop ID 3411) on Gympie Road near Nevin Street will need to be removed. This permanent removal would be required to accommodate the proposed new shared path from Gympie Road service road to Nevin Street.

This bus stop services an inbound bus (bus 680), which travels to Chermide Shopping Centre. The nearest bus stop is approximately 100 metres away on Gympie Road near Nevin Street, stop 42 (stop ID 3410) in Aspley. This bus stop will remain and continue to be serviced by the inbound bus 80.



Environmental

Council will be removing approximately four trees to facilitate the project, including three trees near Nevin Street for the proposed shared path connection that is being investigated with TMR. All work will be carried out in accordance with the relevant environmental guidelines and offset planting will be undertaken in accordance with Council policies.